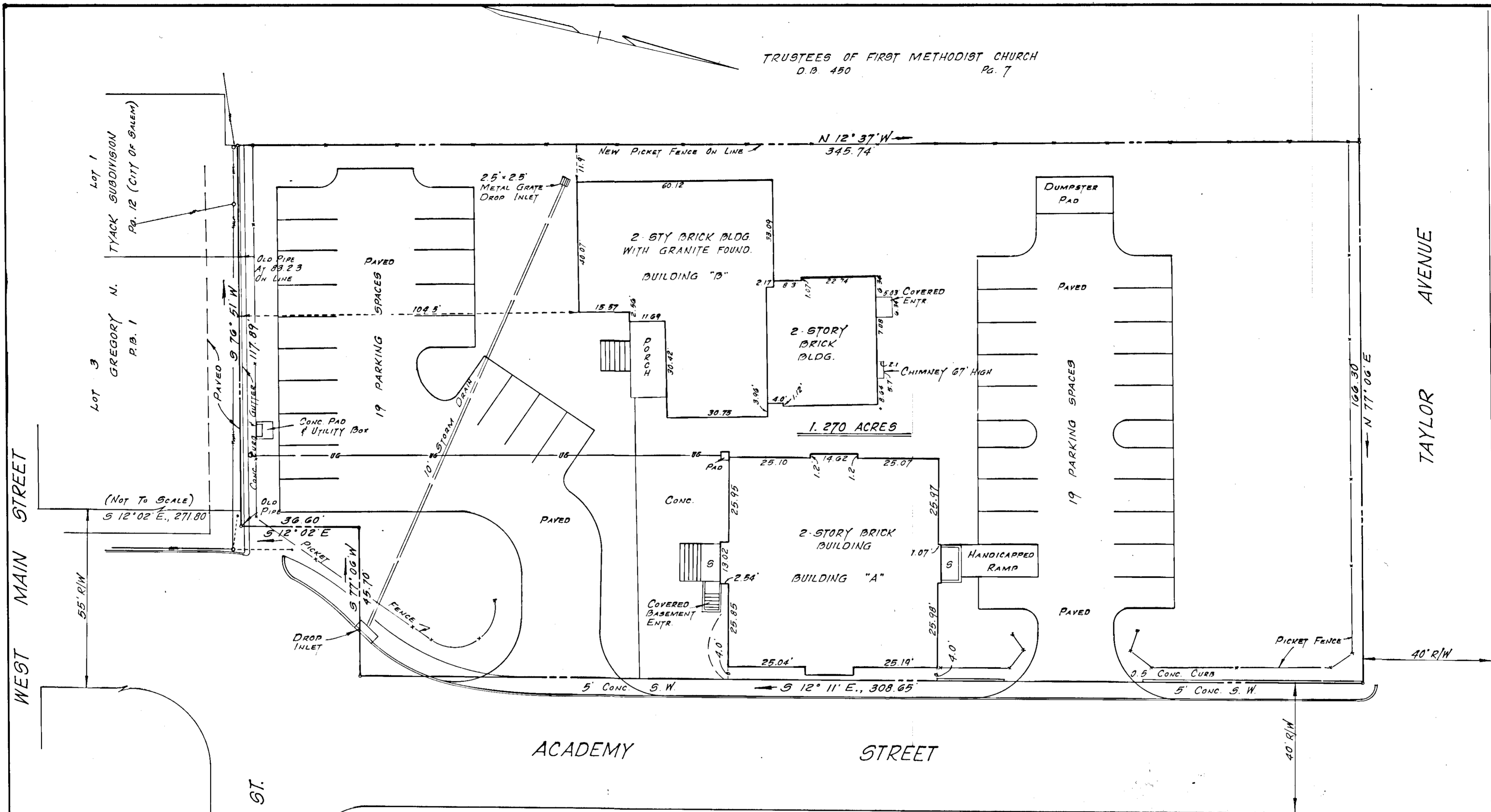


TRUSTEES OF FIRST METHODIST CHURCH
D.B. 450 Pg. 7



THE TOTAL AREA INCLUDED WITHIN THE BOUNDS OF "THE ACADEMY CONDOMINIUM" IS 1.270 ACRES OF LAND.

NOTE: TOTAL 38 PARKING SPACES

SURVEYORS CERTIFICATE:

I HEREBY CERTIFY THIS PLAT AND PLAN OF CONDOMINIUM SUBDIVISION CONSISTING OF SIX (6) SHEETS IS CORRECT: THAT IS A SUBDIVISION OF LAND AND BUILDINGS ENTITLED "THE ACADEMY CONDOMINIUM" AS RECORDED AMONG THE LAND RECORDS OF SALEM, VIRGINIA, IN DEED BOOK , PAGE , AND OF THE IMPROVEMENTS LOCATED THEREON CONSISTING OF TWO (2) BUILDINGS CONTAINING SIXTEEN (16) UNITS AND THAT IT HAS BEEN PREPARED PURSUANT TO AND IN COMPLIANCE WITH THE REQUIREMENTS AND PROVISIONS OF CHAPTER 4.2 IN TITLE 55 OF THE 1950 CODE OF VIRGINIA, AS AMENDED, I.E., THE CONDOMINIUM ACT.

I FURTHER CERTIFY THAT THE LOCATIONS AND DIMENSIONS OF ALL EXISTING IMPROVEMENTS HAVE BEEN CAREFULLY ESTABLISHED BY A TRANSIT TAPE SURVEY AND THAT, UNLESS OTHERWISE SHOWN, THERE ARE NO VISIBLE ENCROACHMENTS. I FURTHER CERTIFY THAT ALL CONDOMINIUM UNITS, OR PORTIONS THEREOF, DEPICTED ON THIS PLAT AND PLAN OF CONDOMINIUM SUBDIVISION HAVE BEEN SUBSTANTIALLY COMPLETED.

Jack G. Bess
JACK G. BESS, CERTIFIED LAND SURVEYOR

DEC 23, 1985
DATE

IN THE CLERK'S OFFICE OF THE CIRCUIT COURT OF THE CITY OF SALEM VIRGINIA, THIS INSTRUMENT WITH THE CERTIFICATE OF ACKNOWLEDGEMENT THERETO ANNEXED IS ADMITTED TO RECORD ON February 19, 1985, AT 10:37 O'CLOCK A.M.

TESTE: *Shirley Hordley* deputy
CLERK



THE ACADEMY CONDOMINIUM

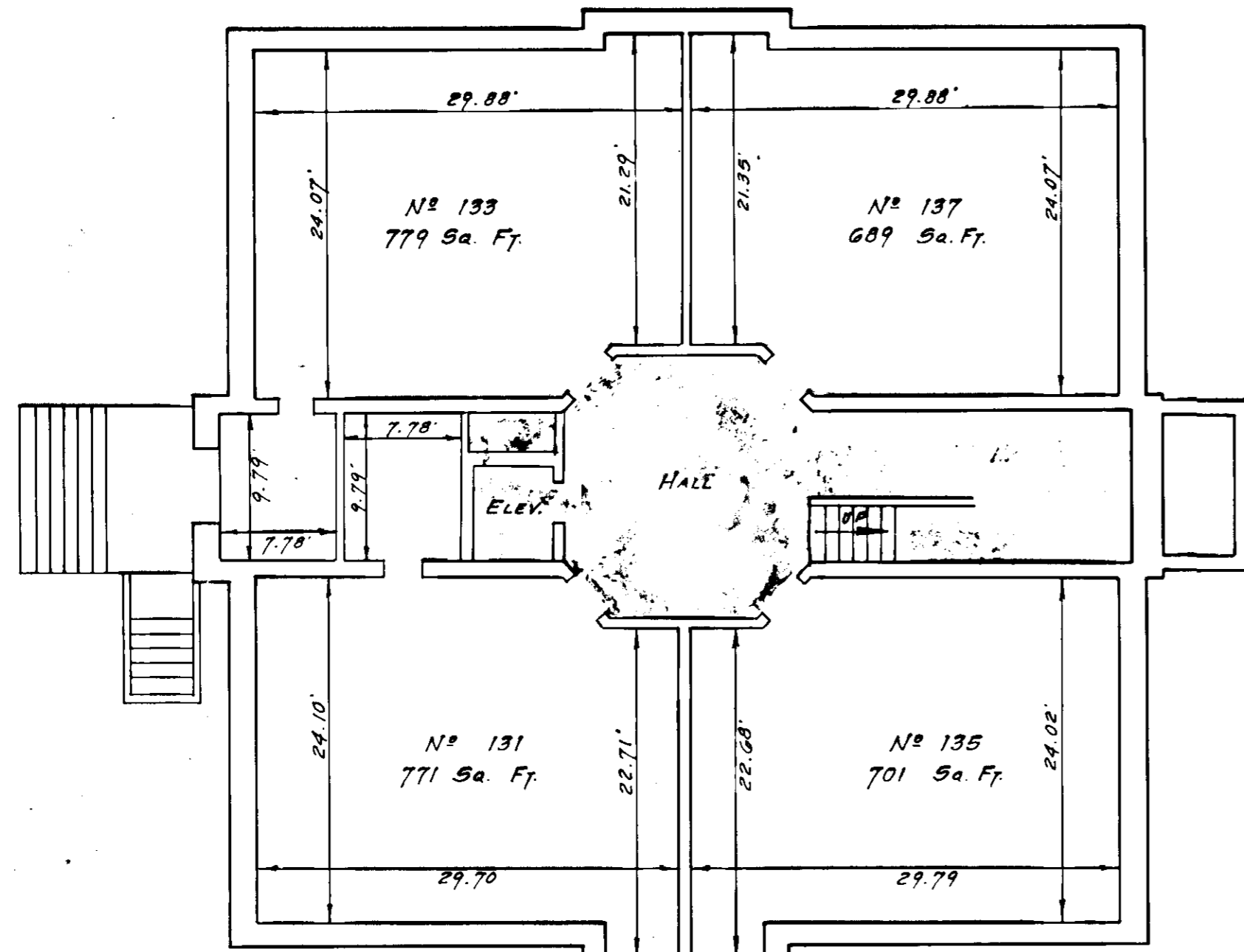
SITUATED ON THE NORTHWEST CORNER OF ACADEMY STREET AND TAYLOR AVENUE AND FORMERLY BEING THE ACADEMY STREET SCHOOL

SALEM, VIRGINIA
SCALE: 1" = 20'

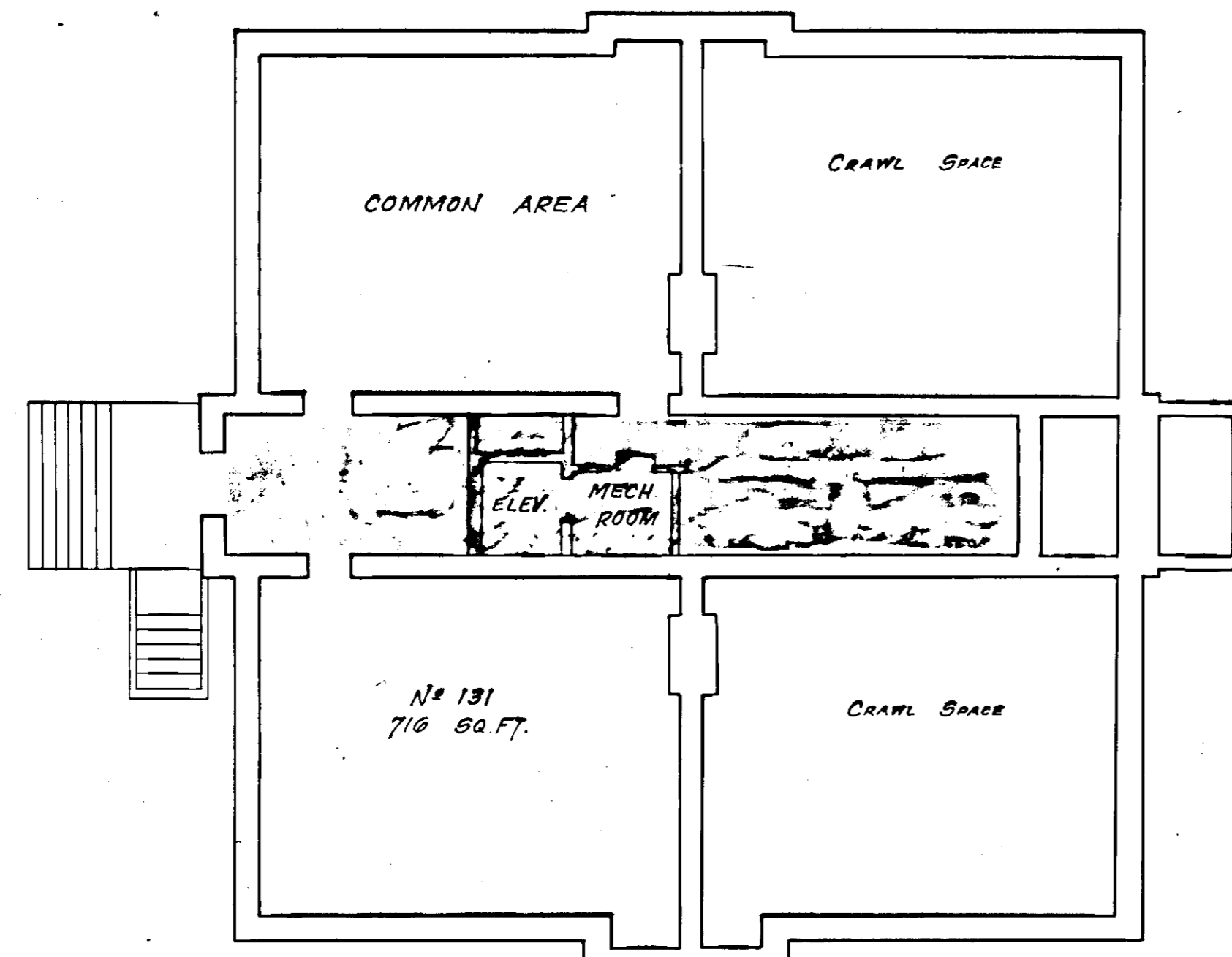
MAY 6, 1985

BY: JACK G. BESS
CERTIFIED LAND SURVEYOR

N.B.W. 85



FIRST FLOOR



BASEMENT

LEGEND :
 1. VERTICAL DATUM - U.S.G.S. MEAN DATUM.
 2. DENOTES GENERAL COMMON ELEMENT.

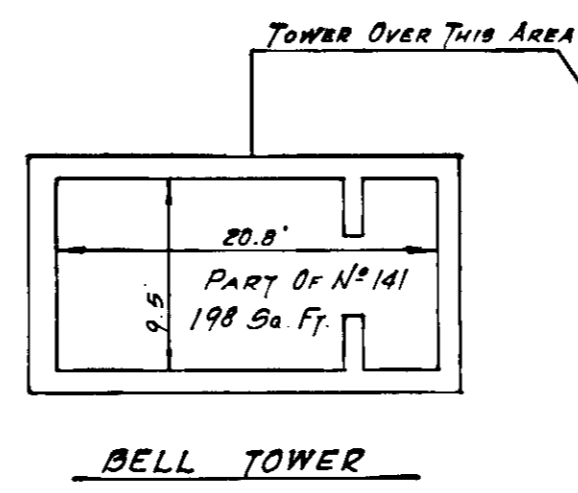
NOTE: INCLUDED AS A PART OF EACH UNIT IS THE DRYWALL AND PLASTER. ALL DIMENSIONS SHOWN ON THIS PLAT ARE INTERIOR DIMENSIONS CALCULATED FROM INSIDE FACES OF STUDS.

ARCHITECT CERTIFICATE :
 I, FRANCIS A. SHANE, A REGISTERED ARCHITECT IN THE COMMONWEALTH OF VIRGINIA, HEREBY CERTIFY THAT THIS LOCATION PLAT, EXHIBIT "A", ACCURATELY SHOWS THE UNITS DELINEATED AND COMPLIES WITH THE PROVISIONS OF SECTION 55-79.58 PARAGRAPH (B) OF THE CONDOMINIUM ACT. I FURTHER CERTIFY THAT ALL UNITS OR PORTIONS THEREOF DEPICTED HEREON HAVE BEEN SUBSTANTIALLY COMPLETED.

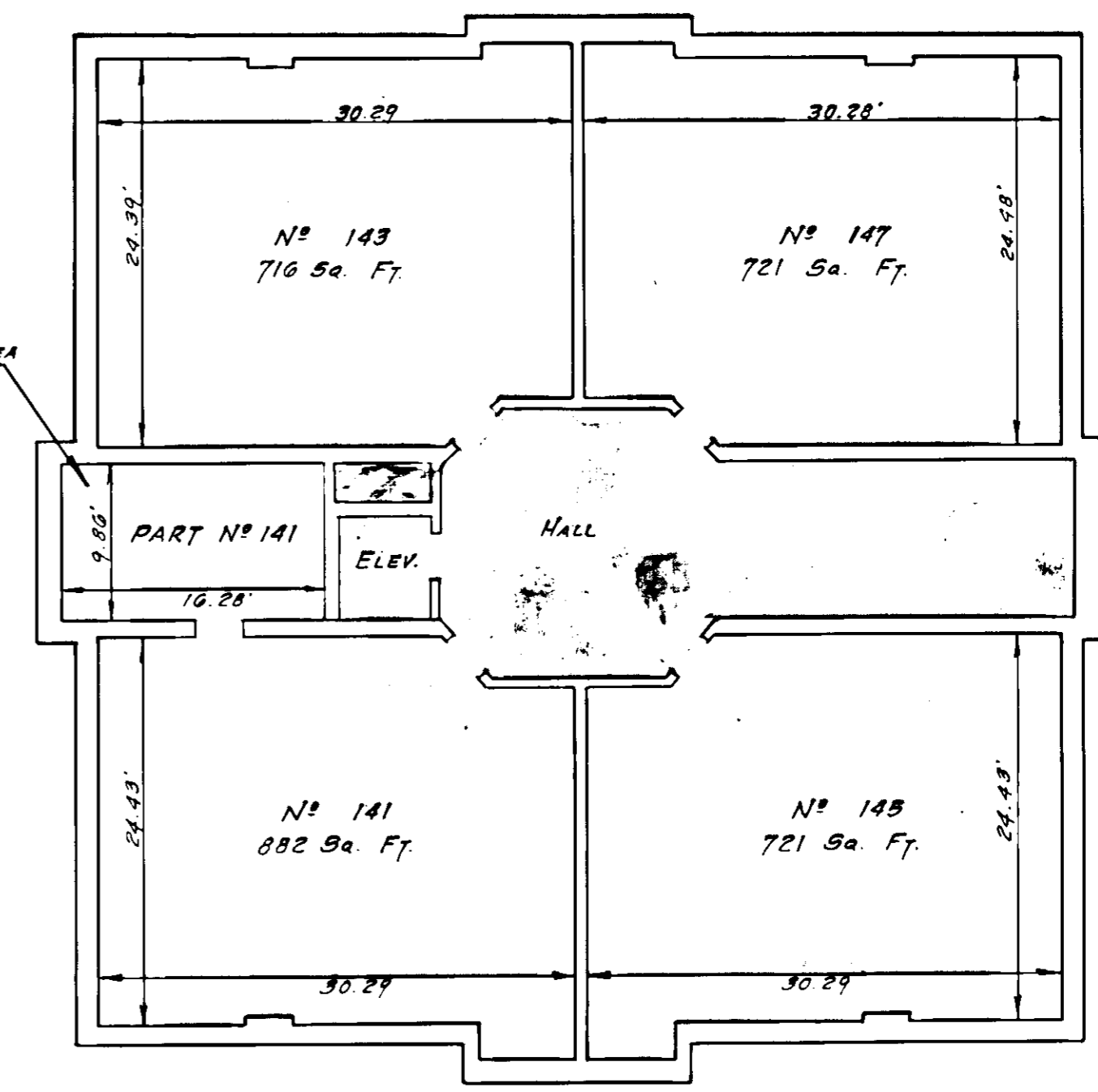
GIVEN UNDER MY HAND THIS 23 DAY OF December 1985

Francis A. Shane
 FRANCIS A. SHANE,

NOTE: EXHIBIT "A" INCLUDES SHEETS 2, 3, 4, 5 & 6 OF SIX SHEETS



BELL TOWER



SECOND FLOOR

NOTE: UNIT N° 131 CONTAINS A TOTAL OF 1487 SQ. FT.
 UNIT N° 141 CONTAINS A TOTAL OF 1080 SQ. FT.

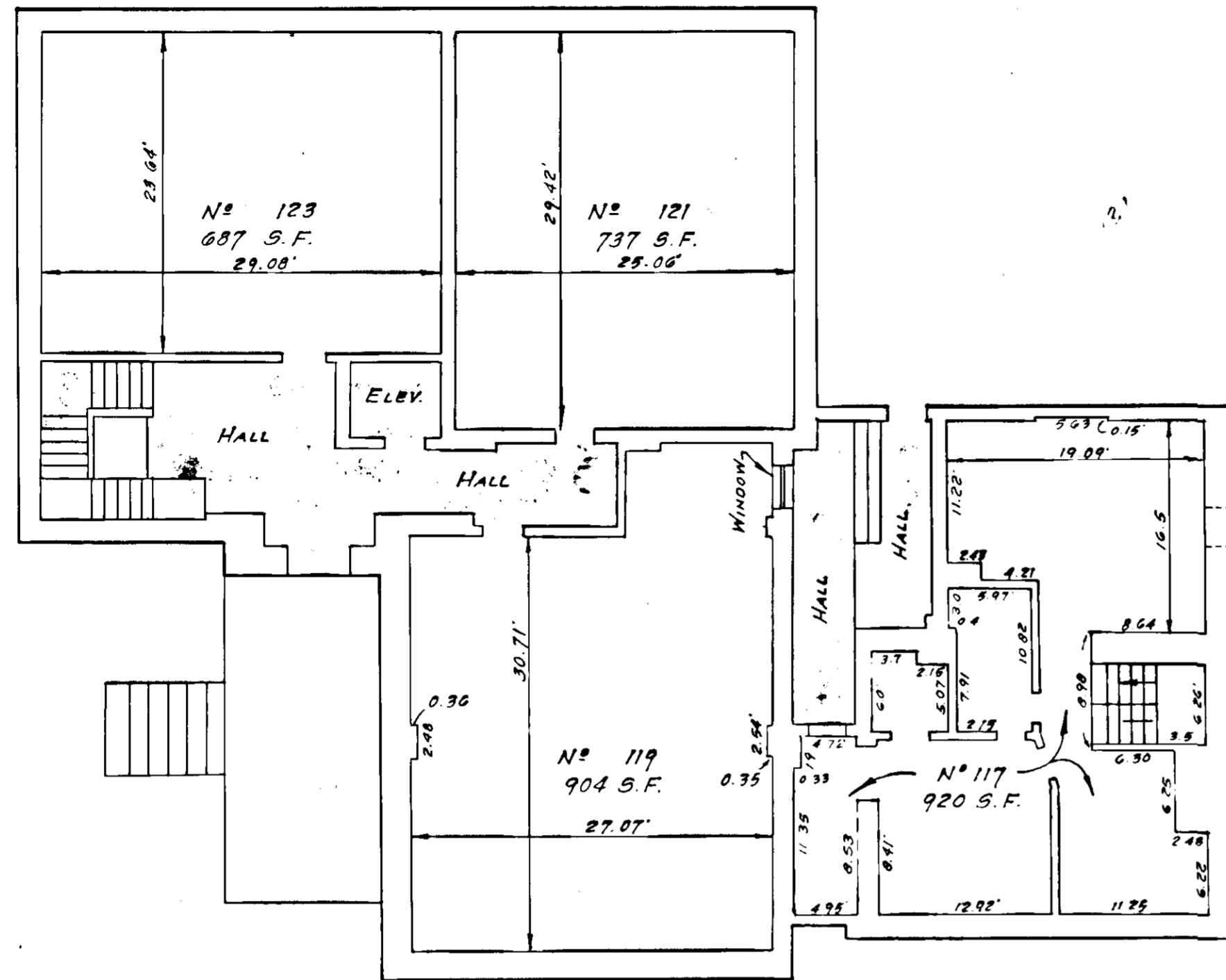
SHEET 2 OF 6

EXHIBIT "A"
THE ACADEMY CONDOMINIUM
 SITUATED ON THE NORTHWEST CORNER OF ACADEMY STREET AND TAYLOR AVENUE AND FORMERLY BEING THE ACADEMY STREET SCHOOL

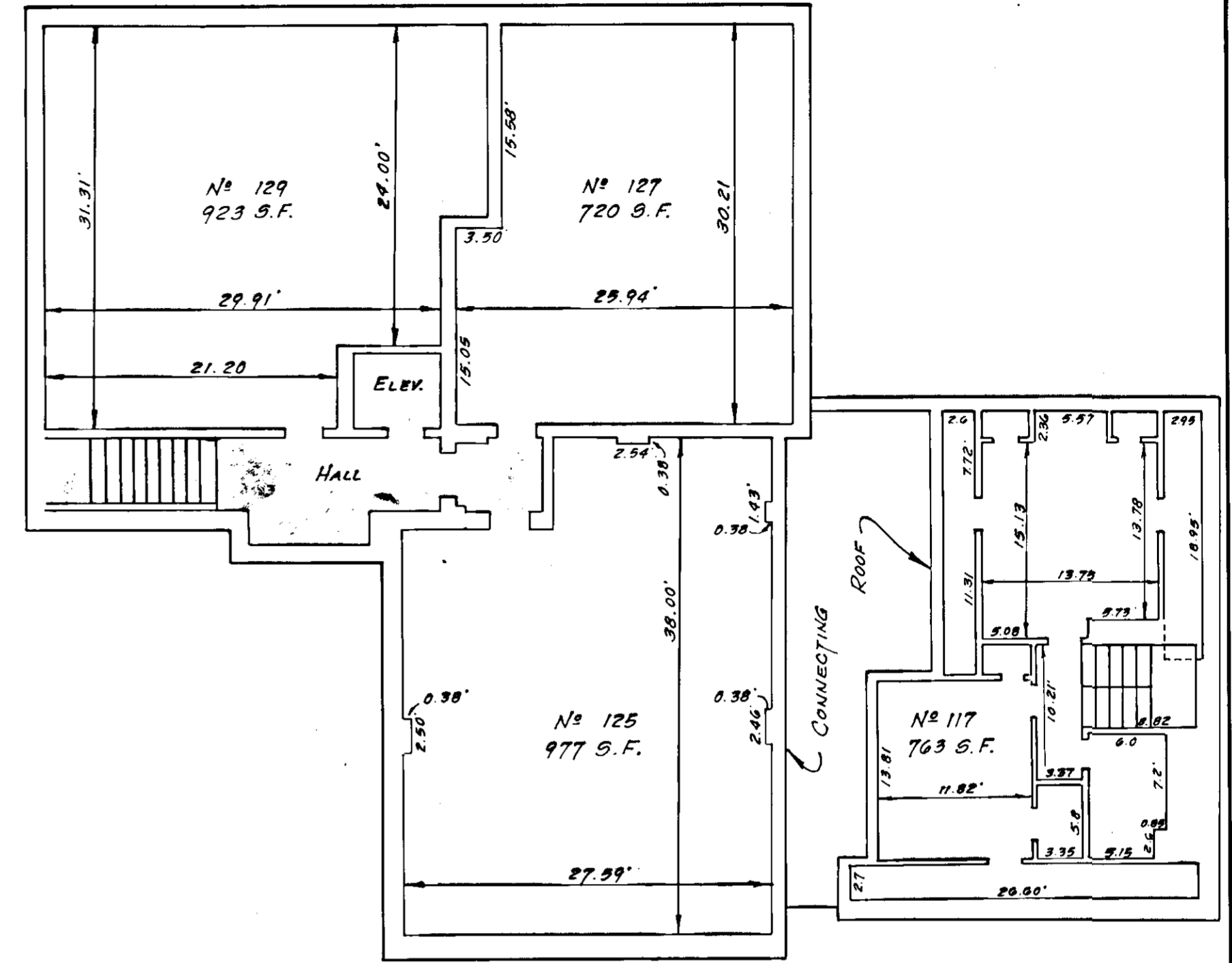
SALEM, VIRGINIA
 SCALE: 1" = 10'
 MAY 6, 1985
 REV. DEC. 31, 1985

By: JACK G. BESS
 CERTIFIED LAND SURVEYOR N.B.W.85

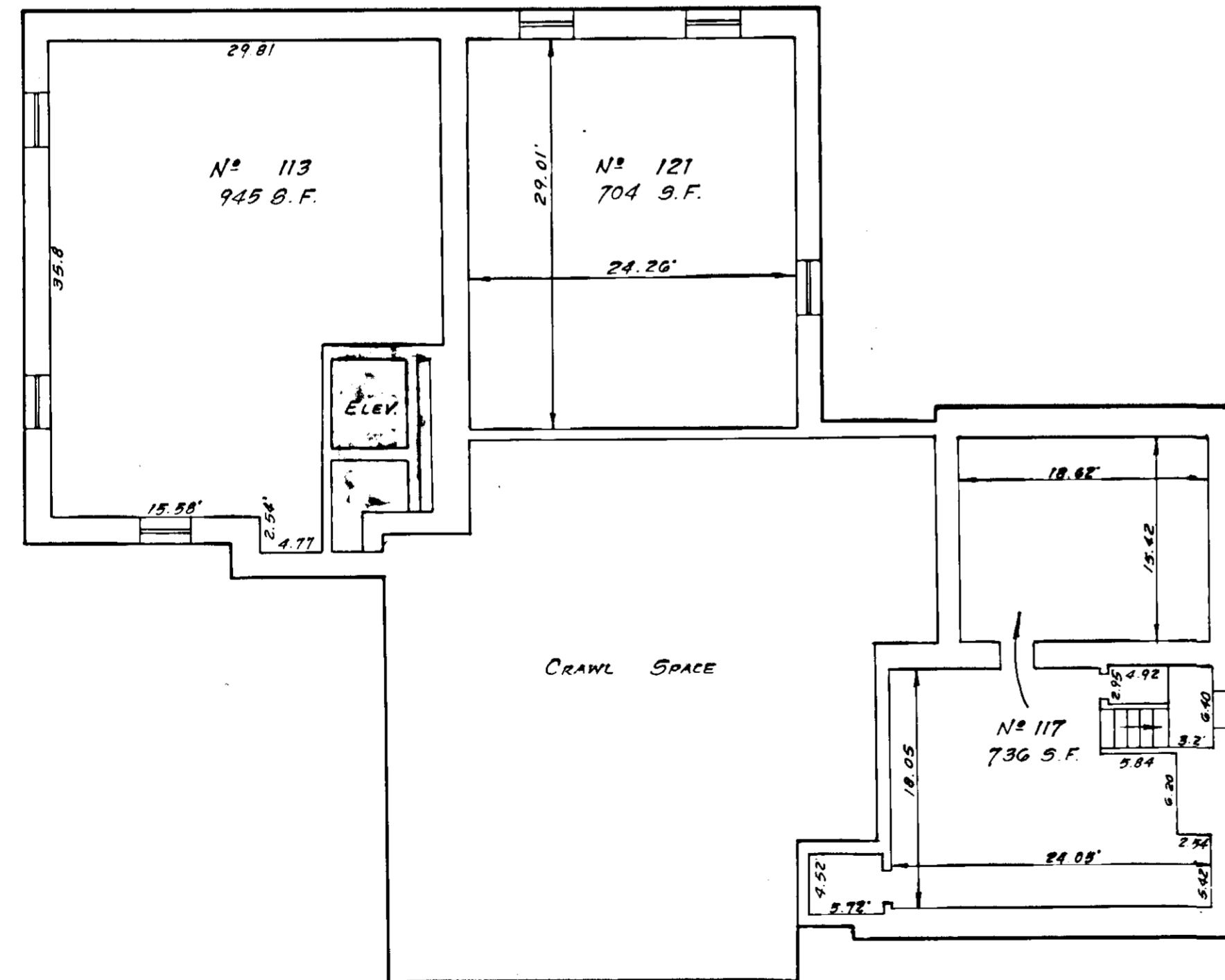
BUILDING "A"



FIRST FLOOR



SECOND FLOOR



BASEMENT

BUILDING "B"

NOTE: UNIT N° 117 CONTAINS 2419 SQ. FT.
UNIT N° 121 CONTAINS 1441 SQ. FT.

LEGEND:
1. VERTICAL DATUM - U.S.G.S. MEAN SEA LEVEL

2. [Symbol] DENOTES GENERAL COMMON ELEMENT.

NOTE: INCLUDED AS A PART OF EACH UNIT IS THE DRYWALL AND PLASTER. ALL DIMENSIONS SHOWN ON THIS PLAT ARE INTERIOR DIMENSIONS CALCULATED FROM INSIDE FACES OF STUDS.

SHEET 3 OF 6

EXHIBIT "A"
THE ACADEMY CONDOMINIUM
SITUATED ON THE NORTHWEST CORNER OF ACADEMY STREET AND TAYLOR AVENUE AND FORMERLY BEING THE ACADEMY STREET SCHOOL

SALEM,
SCALE: 1"=10'

VIRGINIA

BY: JACK G. BESS
CERTIFIED LAND SURVEYOR
MAY 6, 1985
REV. DEC. 31, 1985
N.B.W. 85



REAR VIEW - BUILDING "B"

1053.71 1052.62
BASEMENT BASEMENT

REAR VIEW - BUILDING "A"

NORTH ELEVATION

SCALE: 1/8" = 1'-0"

SHEET 4 OF 6

B.M. ARROWHEAD ON FIRE HYDRANT
AT CORNER OF ALLEY AND
ACADEMY STREET.
ELEV. 1063.13 (U.S.G.S.)

EXHIBIT "A"
THE ACADEMY CONDOMINIUM
SITUATED ON THE NORTHWEST CORNER ACADEMY
STREET AND TAYLOR AVENUE AND FORMERLY BEING
THE ACADEMY STREET SCHOOL

GALEM VIRGINIA
SCALE: AS NOTED MAY 6, 1985

By: JACK G. BESS
CERTIFIED LAND SURVEYOR N.B.W. 85



FRONT VIEW - BUILDING "B"

FRONT VIEW - BUILDING "A"

SOUTH ELEVATION
SCALE: 1/8" = 1'-0"

SHEET 5 OF 6

EXHIBIT "A"
THE ACADEMY CONDOMINIUM
SITUATED ON THE NORTHWEST CORNER ACADEMY STREET AND TAYLOR AVENUE AND FORMERLY BEING THE ACADEMY STREET SCHOOL

SALEM,
SCALE: AS NOTED

VIRGINIA
MAY 6, 1985

By: JACK G. BESS
CERTIFIED LAND SURVEYOR N.B.W. 85

EAST ELEVATION
SCALE: 1/8" = 1'-0"

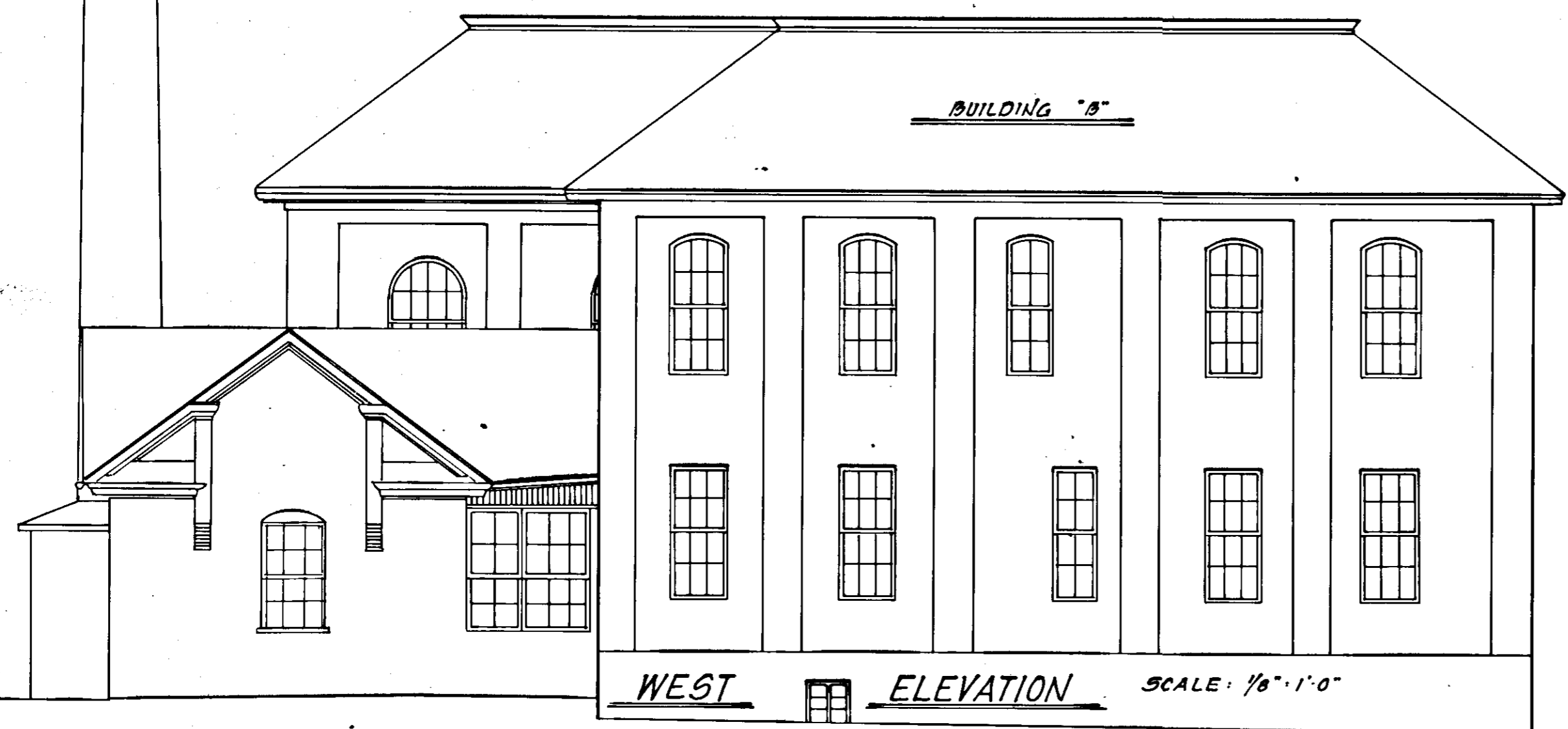
BUILDING "B"

BUILDING "A"



BUILDING "B"

WEST ELEVATION SCALE: 1/8" = 1'-0"



SHEET 6 OF 6

EXHIBIT "A"
THE ACADEMY CONDOMINIUM
SITUATED ON THE NORTHWEST CORNER OF ACADEMY STREET AND TAYLOR AVENUE AND FORMERLY BEING THE ACADEMY STREET SCHOOL

SALEM, VIRGINIA
SCALE: AS NOTED MAY 6, 1985

By: JACK G. BESS
CERTIFIED LAND SURVEYOR N.B. W. 85