

SURVEYOR'S CERTIFICATE

I HEREBY CERTIFY THIS PLAT AND PLAN OF CONDOMINIUM SUBDIVISION CONSISTING OF TWO (2) SHEETS, IS CORRECT; THAT IT IS A SUBDIVISION OF LAND AND BUILDING ENTITLED "LANGHORNE CONDOMINIUM" AS RECORDED AMONG THE LAND RECORDS OF THE CITY OF SALEM, VIRGINIA, IN D.B. 81, PGS. 712, 714, 716 AND OF THE IMPROVEMENTS LOCATED THEREON CONSISTING OF ONE BUILDING CONTAINING SIX (6) UNITS AND THAT IT HAS BEEN PREPARED PURSUANT TO AND IN COMPLIANCE WITH THE REQUIREMENTS AND PROVISIONS OF CHAPTER 4.2 IN TITLE 55 OF THE CODE OF VIRGINIA 1950 AS AMENDED, I.E. THE CONDOMINIUM ACT.

I FURTHER CERTIFY THAT THE LOCATIONS OF THE BUILDING AND DIMENSIONS OF ALL EXISTING IMPROVEMENTS HAVE BEEN CAREFULLY ESTABLISHED BY A TRANSIT TAPE SURVEY AND THAT UNLESS OTHERWISE SHOWN, THERE ARE NO VISIBLE ENCROACHMENTS.

I FURTHER CERTIFY THAT ALL CONDOMINIUM UNITS, OR PORTIONS THEREOF, DEPICTED ON THIS PLAT AND PLAN OF CONDOMINIUM SUBDIVISION HAVE BEEN SUBSTANTIALLY COMPLETED.

THE TOTAL AREA INCLUDED WITHIN THE BOUNDARY OF LANGHORNE CONDOMINIUM CONTAINS 21,213 SQUARE FEET, (0.487 ACRES).

T. P. Parker
T. P. PARKER, LAND SURVEYOR LIC. # 420 7/11/83 DATE

ENGINEER'S CERTIFICATE

I, T. P. PARKER, A REGISTERED ENGINEER IN THE COMMONWEALTH OF VIRGINIA, HEREBY CERTIFY THAT THE LOCATION PLAT, EXHIBIT "A" ACCURATELY SHOWS THE UNITS DELINEATED AND COMPLIES WITH THE PROVISIONS OF SECTION 55-79-58, PARAGRAPH (B) OF THE CONDOMINIUM ACT.

I, FURTHER CERTIFY THAT UNLESS NOTED OTHERWISE ALL UNITS DEPICTED HEREON HAVE BEEN SUBSTANTIALLY COMPLETED GIVEN THIS 11 DAY OF JULY, 1983.

T. P. Parker
T. P. PARKER, P.E. LIC. # 771

IN THE CLERK'S OFFICE OF THE CIRCUIT COURT OF SALEM, VIRGINIA THIS MAP WAS PRESENTED AND WITH THE CERTIFICATE OF ACKNOWLEDGEMENT THERETO ANNEXED ADMITTED TO RECORD AT 10:25 O'CLOCK A.M. ON THIS 13th DAY OF JULY, 1983.

TESTE: *Carmine W. Over*
DEPUTY CLERK

MAP OF
LANGHORNE CONDOMINIUM

PROPERTY OF
K. W. BUILDERS, INC.
SALEM, VIRGINIA

SCALE: 1" = 20'

MARCH 1, 1983

BY: T. P. PARKER & SON
ENGINEERS & SURVEYORS, LTD.
SALEM, VIRGINIA

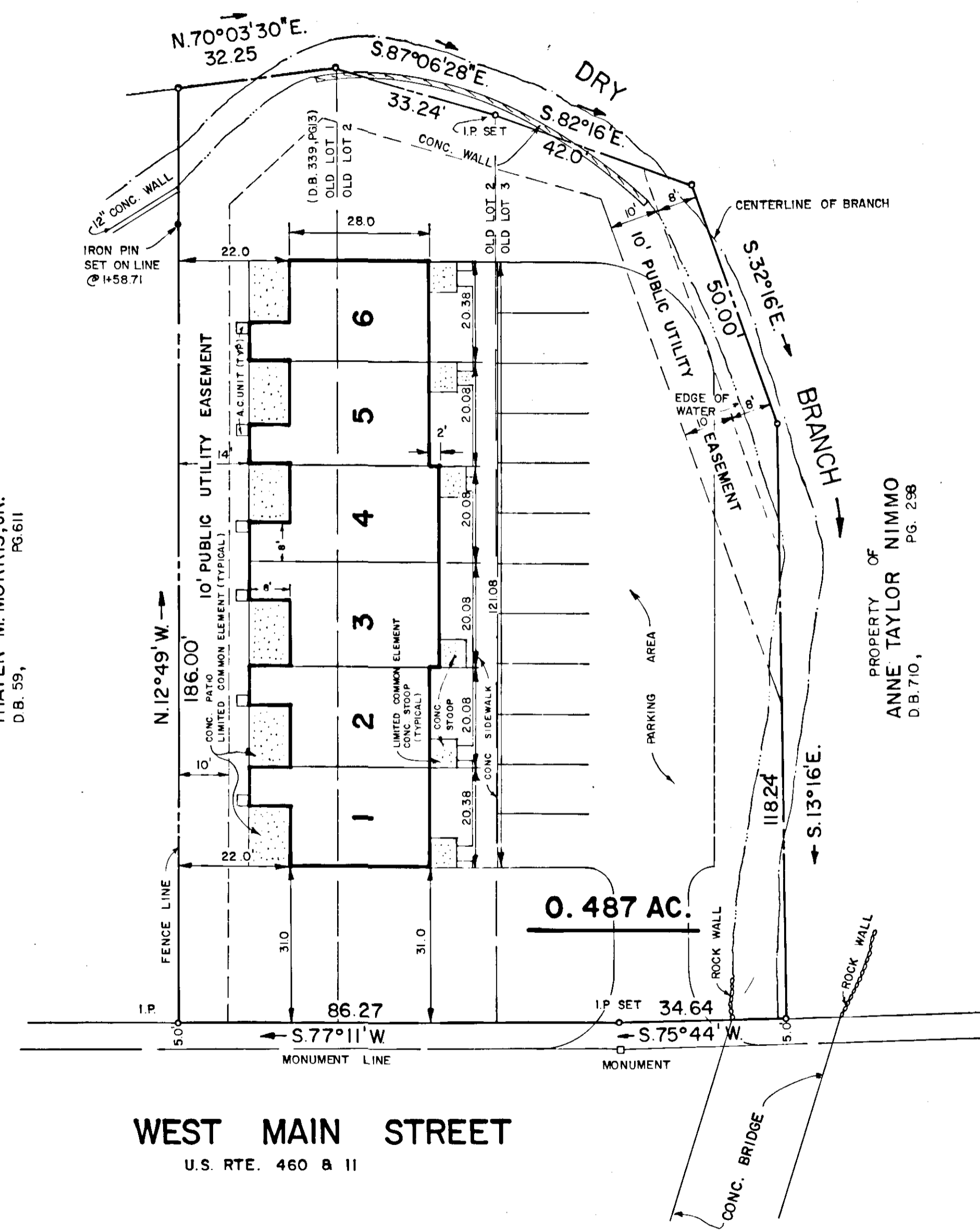
W.O. # 6030

SHEET 1 OF 2

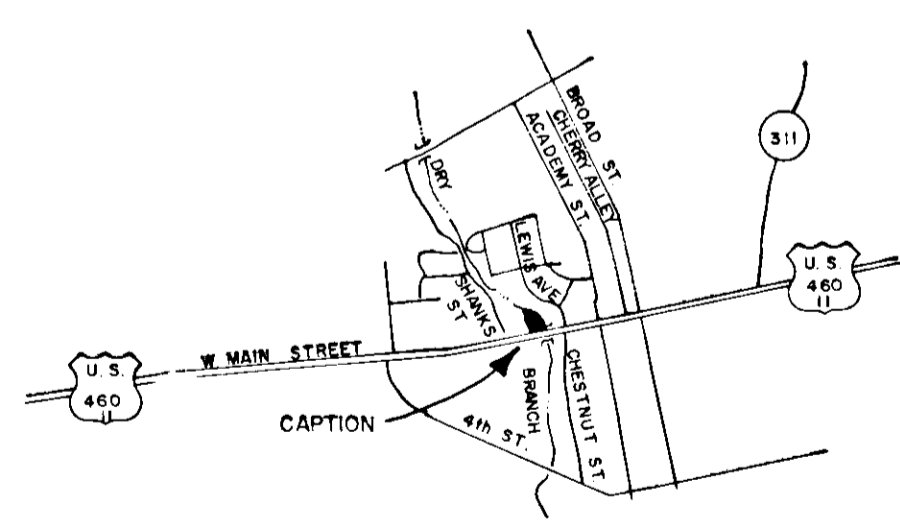
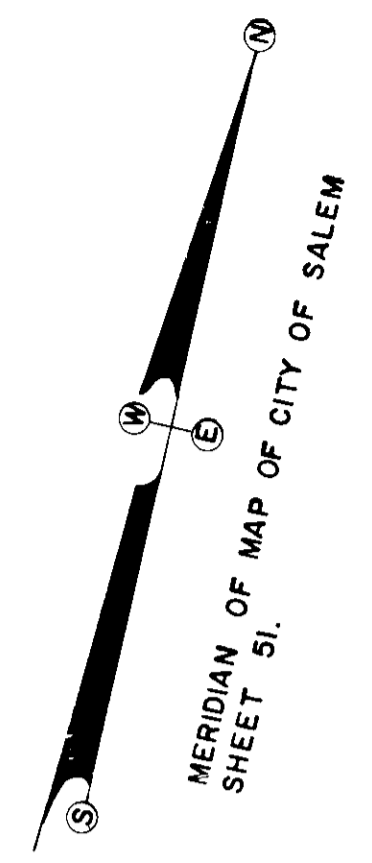
PROPERTY OF
DAVID D. WALKER & ALLEN R. WALKER, JR.
D.B. 65 PG. 704

THAYER M. MORRIS, JR.
D.B. 59, PG. 611

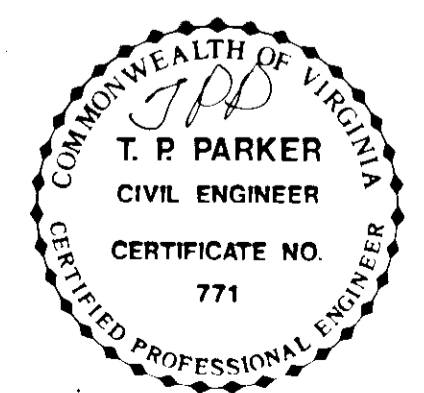
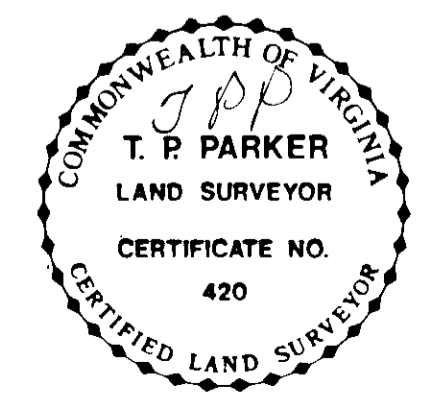
PROPERTY OF
ANNE TAYLOR NIMMO
D.B. 710, PG. 238



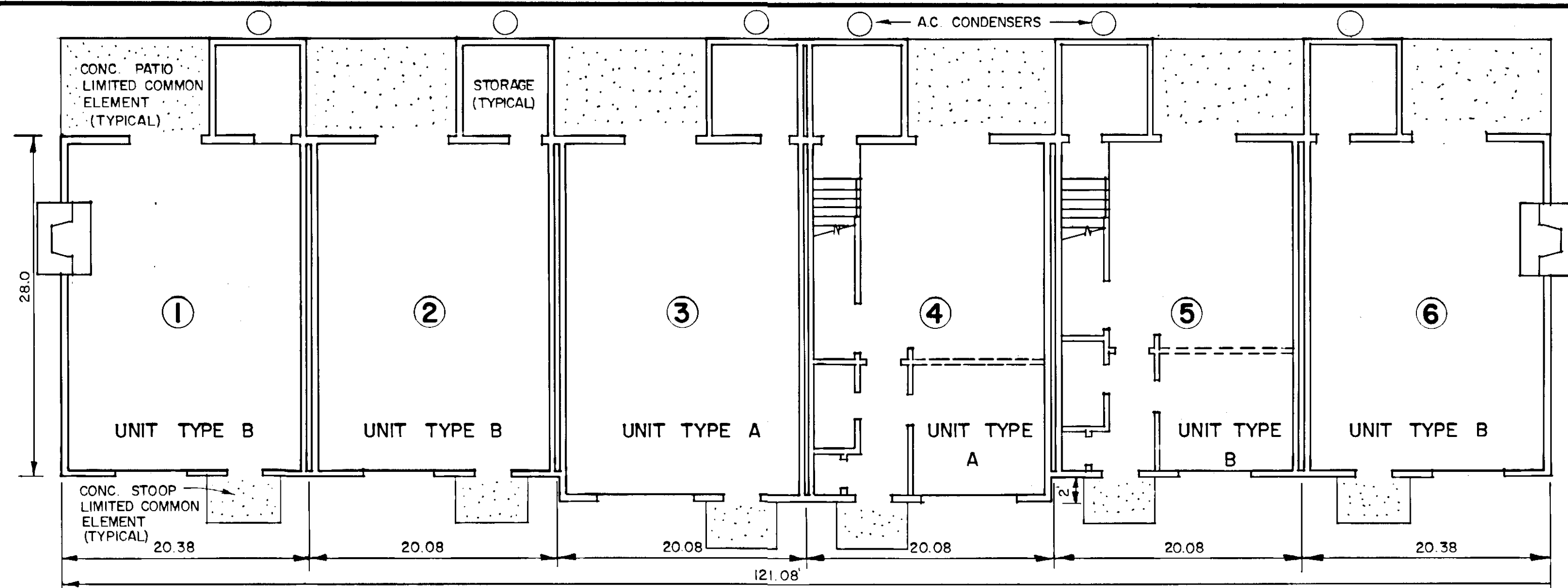
WEST MAIN STREET
U.S. RTE. 460 & 11



VICINITY MAP
NO SCALE

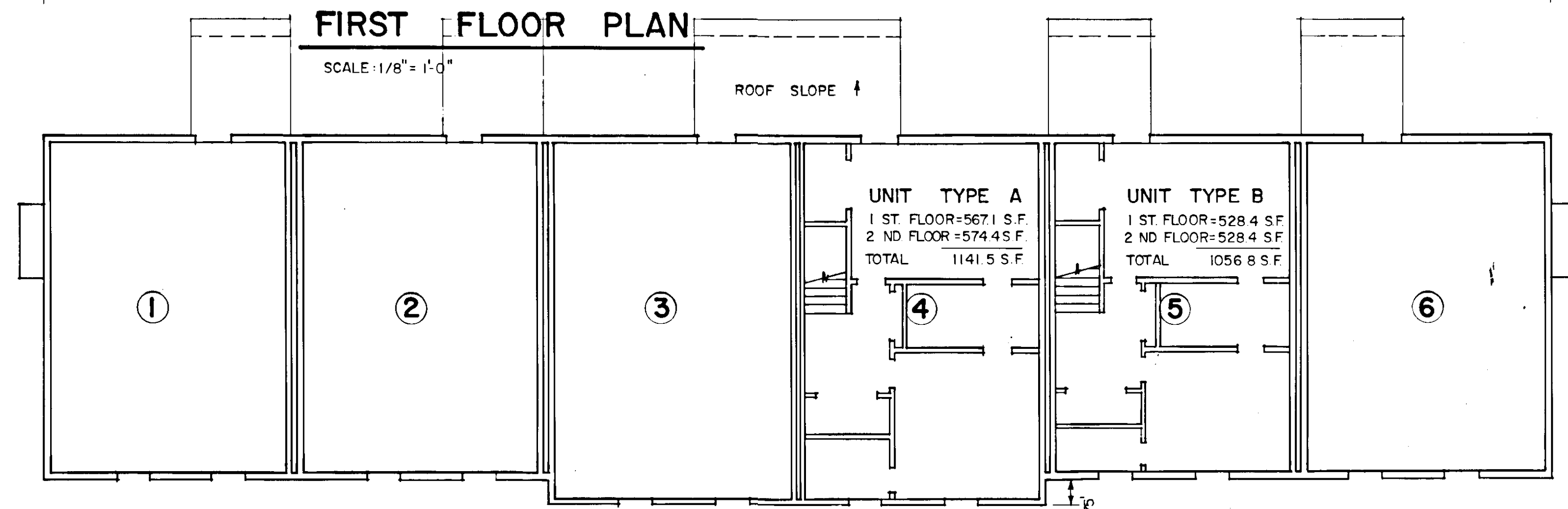


NOTE:
 1. DETAIL PLANS PREPARED BY TIMBER-TRUSS, INC.
 2. ELEVATION BASED ON U.S.G.S DATUM.
 3. LETTERS SHOWN INDICATES BUILDING TYPES.



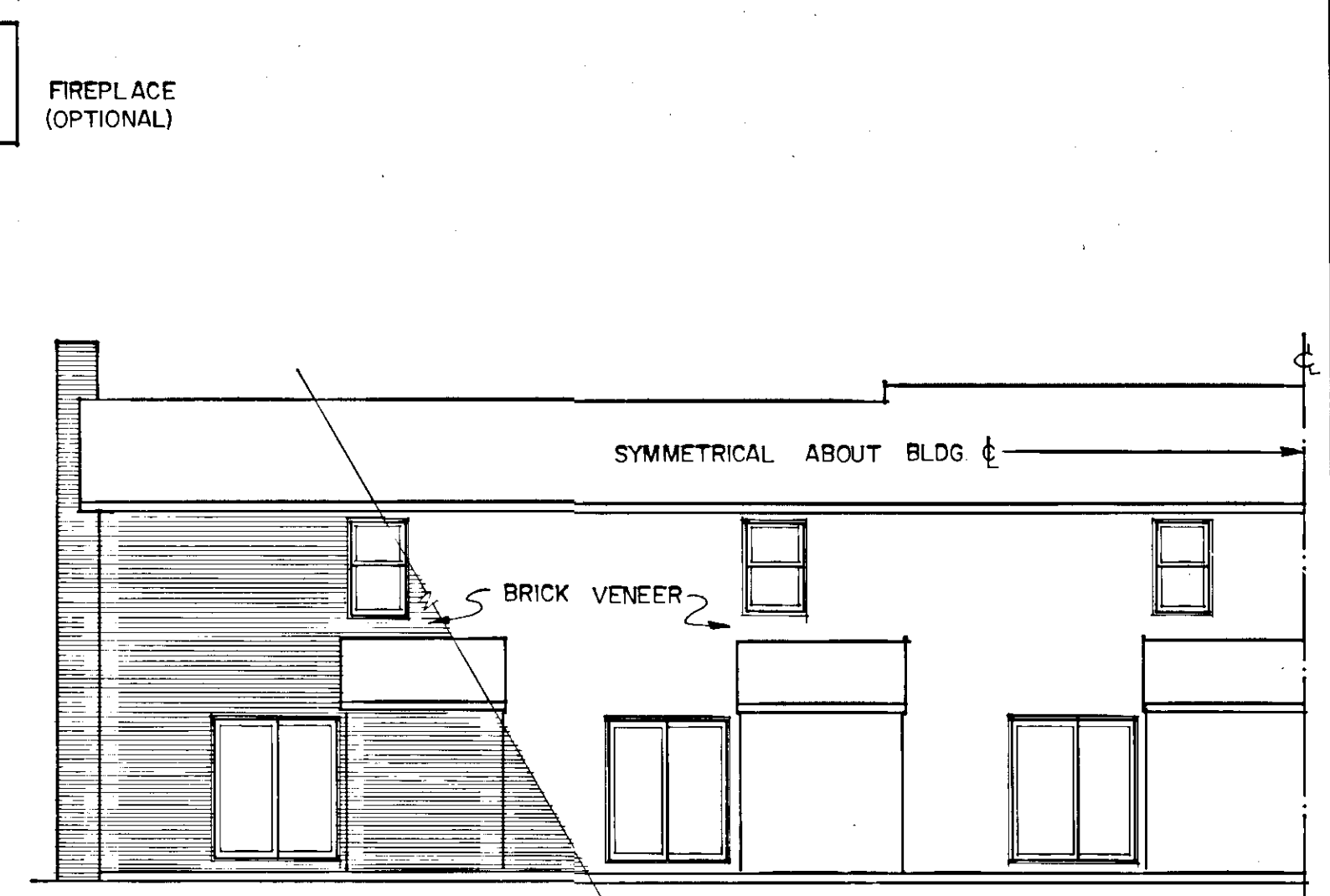
FIRST FLOOR PLAN

SCALE: 1/8" = 1'-0"



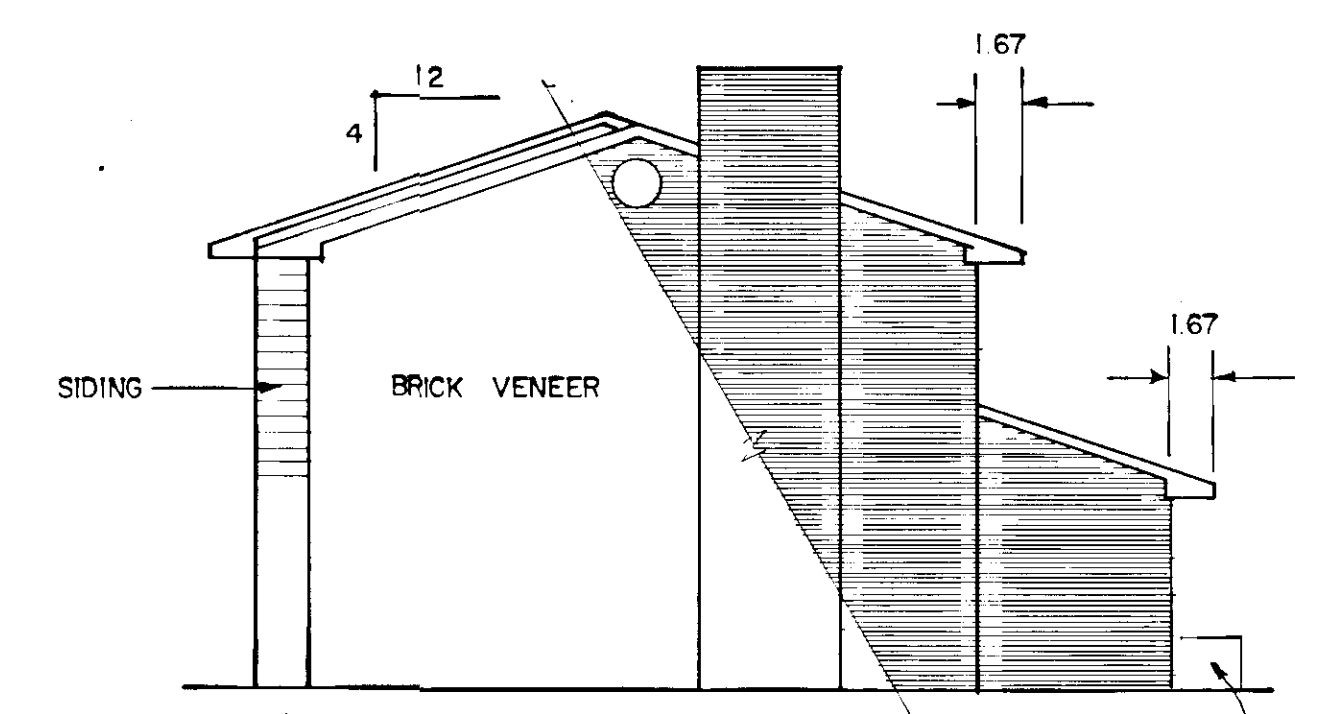
SECOND FLOOR PLAN

SCALE: 1/8" = 1'



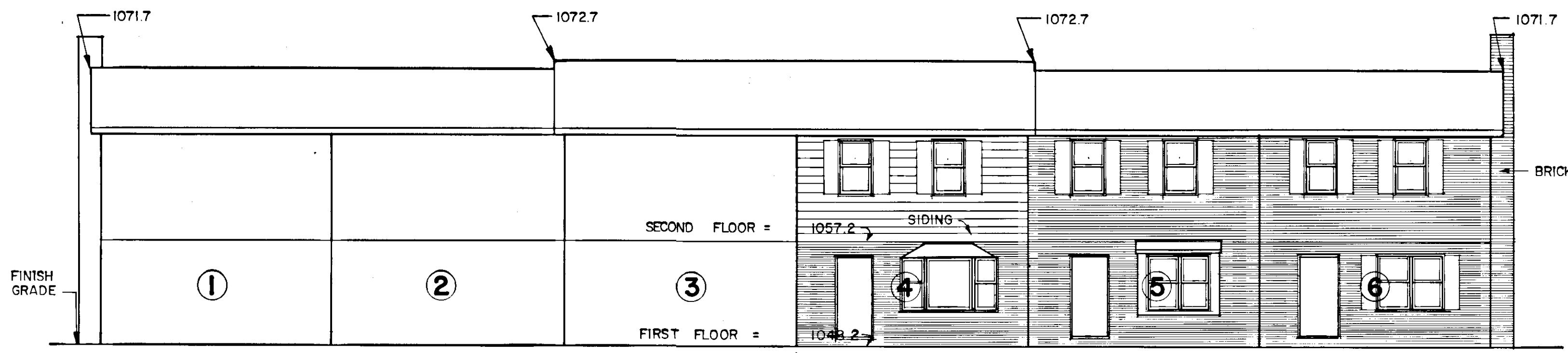
PARTIAL REAR ELEVATION

SCALE: 1/8" = 1'-0"



RIGHT SIDE

SCALE: 1/8" = 1'



PARTIAL FRONT ELEVATION

SCALE: 1" = 1/8"

LEFT SIDE OF FRONT ELEVATION IS MIRROR IMAGE OF WHAT IS SHOWN. BLDG. IS SYMMETRICAL ABOUT CL.

MAP OF
LANGHORNE CONDOMINIUM
 PROPERTY OF
K. W. BUILDERS, INC.
 SALEM, VIRGINIA

SCALE: 1/8" = 1'-0"

MARCH 1, 1983

BY T. P. PARKER & SON
 ENGINEERS & SURVEYORS, LTD.
 SALEM, VIRGINIA

SHEET 2 OF 2