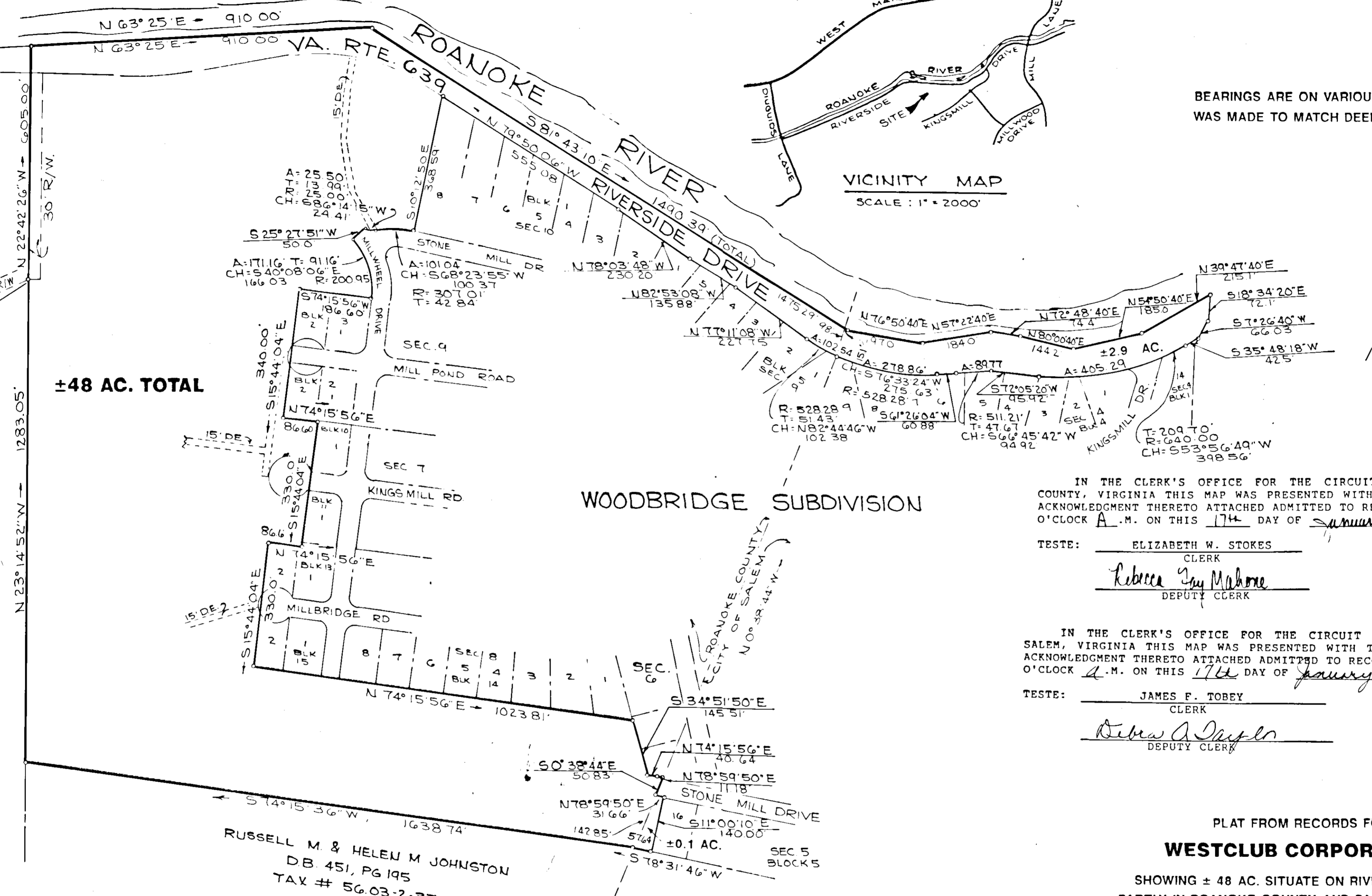


LEONARD D. CLARENCE
 & CARL K. JOBE
 TAX # 56.01-1-18
 DB. 1282, PG. 640

EDWARD W. & LOIS G. PALMER
 DB. 1183, PG. 1861
 TAX # 55.04-1-1

BEARINGS ARE ON VARIOUS MERIDIANS AND NO EFFORT
 WAS MADE TO MATCH DEED MERIDIANS.

VICINITY MAP
 SCALE: 1" = 2000'



±48 AC. TOTAL

WOODBIDGE SUBDIVISION

IN THE CLERK'S OFFICE FOR THE CIRCUIT COURT OF ROANOKE COUNTY, VIRGINIA THIS MAP WAS PRESENTED WITH THE CERTIFICATE OF ACKNOWLEDGMENT THERETO ATTACHED ADMITTED TO RECORD AT 1:08 O'CLOCK A.M. ON THIS 17th DAY OF January, 1989.

TESTE: ELIZABETH W. STOKES
 CLERK
 Rebecca Jay Mahone
 DEPUTY CLERK

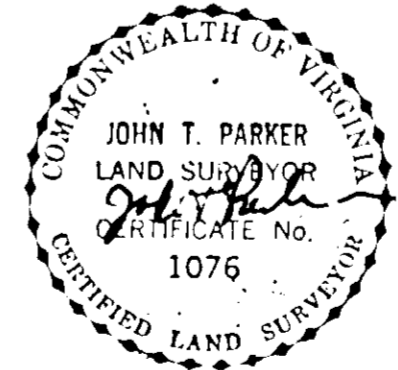
IN THE CLERK'S OFFICE FOR THE CIRCUIT COURT OF CITY OF SALEM, VIRGINIA THIS MAP WAS PRESENTED WITH THE CERTIFICATE OF ACKNOWLEDGMENT THERETO ATTACHED ADMITTED TO RECORD AT 9:22 O'CLOCK A.M. ON THIS 17th DAY OF January, 1989.

TESTE: JAMES F. TOBEY
 CLERK
 Debra A. Taylor
 DEPUTY CLERK

PLAT FROM RECORDS FOR
WESTCLUB CORPORATION

SHOWING ± 48 AC. SITUATE ON RIVERSIDE DRIVE,
 PARTLY IN ROANOKE COUNTY AND PARTLY IN SALEM,
 VIRGINIA.

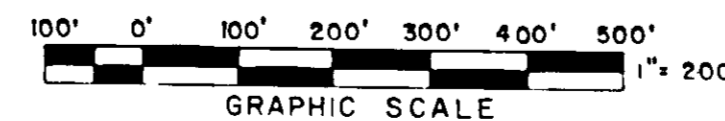
T.P. PARKER & SON
 ENGINEERS & SURVEYORS, LTD.



NOTE:
 THIS PLAT FROM RECORDS DOES NOT REPRESENT AN ACTUAL BOUNDARY SURVEY AND WAS PREPARED FROM EXISTING RECORDS. THIS PLAT WAS PREPARED TO ASSIST IN DESCRIBING PROPERTY BEING CONVEYED. T. P. PARKER & SON, LTD. DOES NOT IN ANYWAY WARRANT THE ACREAGE SHOWN OR THE LOCATION OF ANY LINES OR CORNERS.

±3.0 AC. CITY OF SALEM
 ±45.0 AC. ROANOKE COUNTY
 ± 48.0 AC. TOTAL

THIS PLAT IS SUBJECT TO INFORMATION WHICH MAY BE DISCLOSED BY A TITLE REPORT BY A LICENSED ATTORNEY.



OCTOBER 27, 1988

W.O. 88-0346

SCALE 1"=200'

REVISED JAN. 13, 1989

A PORTION OF THE SUBJECT PROPERTY IS WITHIN THE LIMITS OF THE 100 YEAR FLOOD BOUNDARY AS SHOWN ON THE FEMA FLOOD BOUNDARY MAP. THIS DETERMINATION IS BASED ON THE FLOOD BOUNDARY AND HAS NOT BEEN VERIFIED BY ACTUAL FIELD ELEVATIONS.