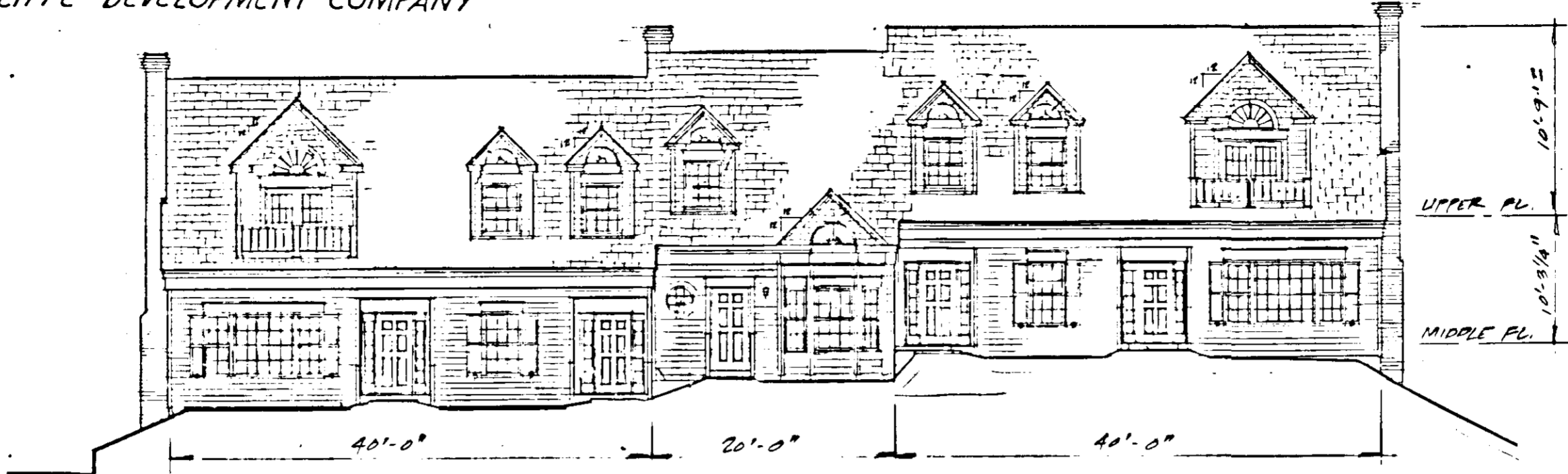


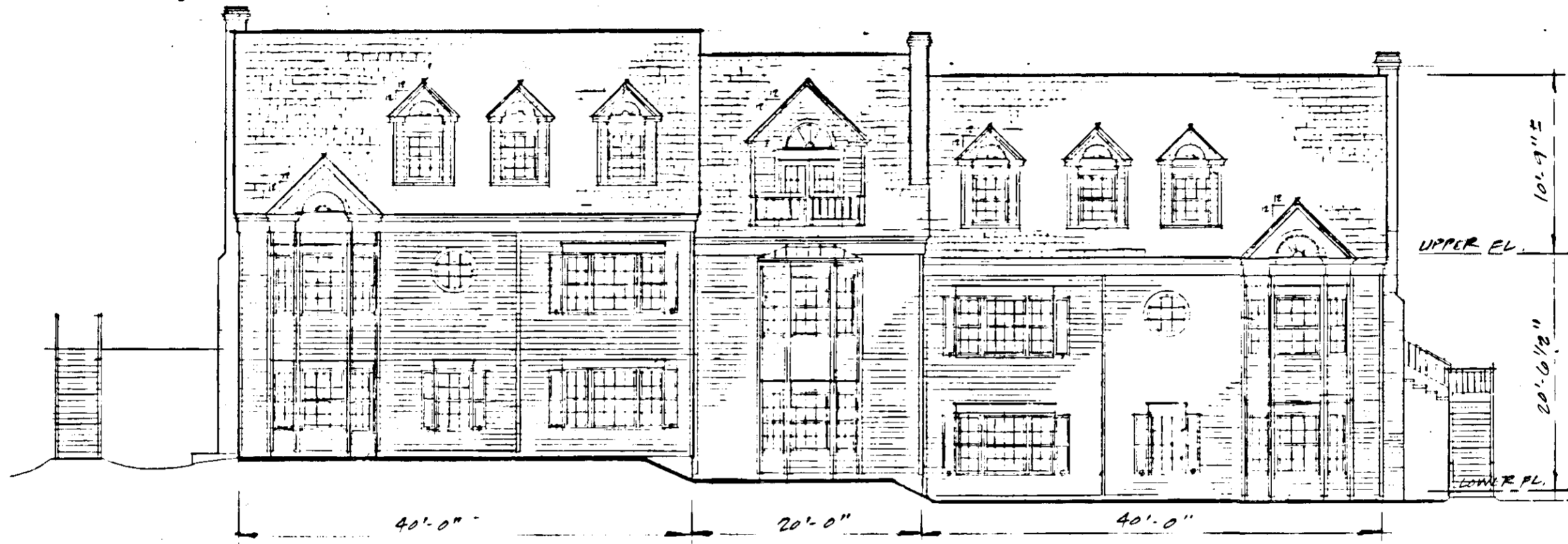
BURWELL PLACE CONDOMINIUM

SITUATED ON THE NORTH SIDE
OF WEST MAIN STREET
CITY OF SALEM, VIRGINIA
DATE: NOVEMBER 1, 1986
SHEET 3 OF 3

DECLARANT: WYCLIFFE DEVELOPMENT COMPANY

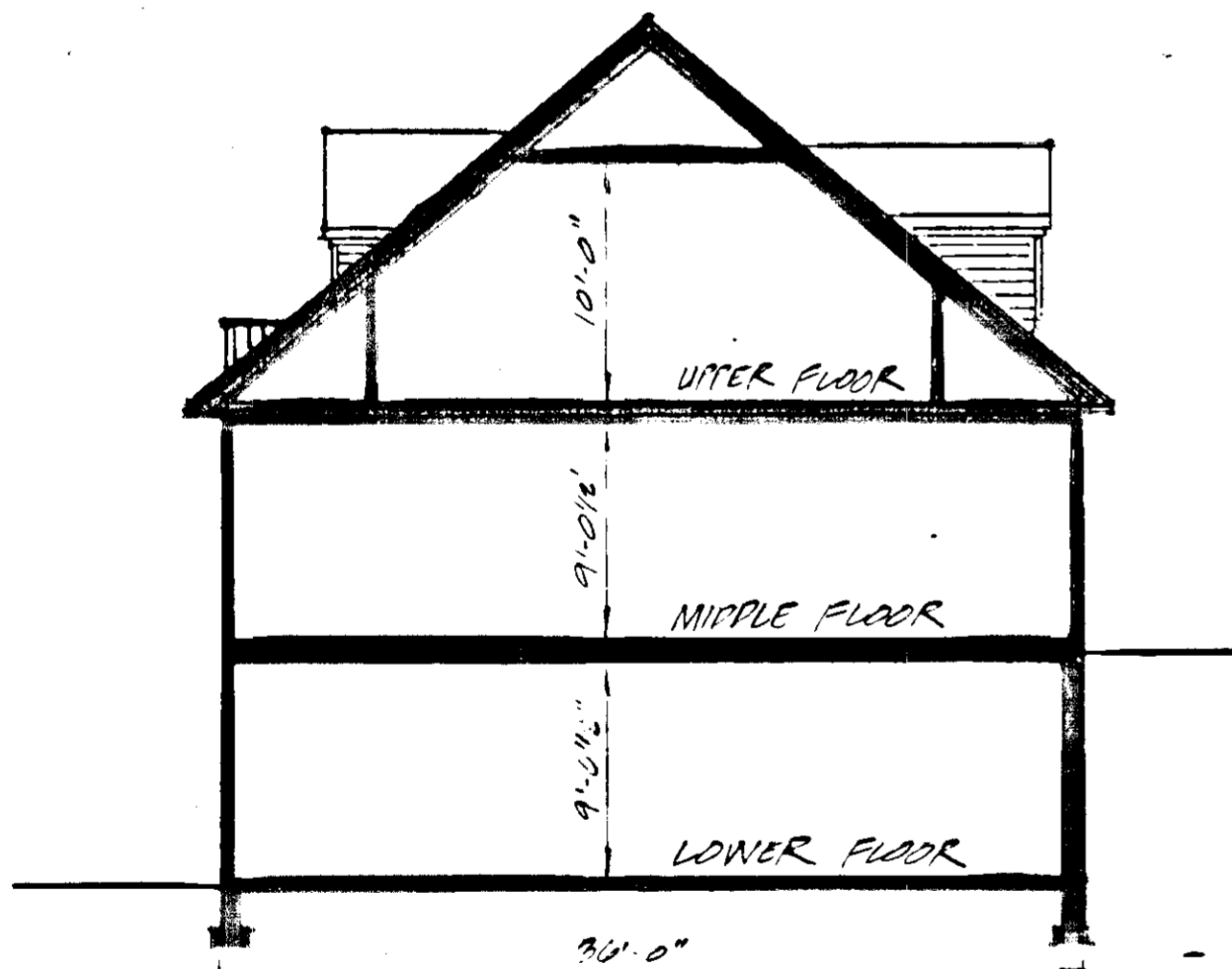


A ELEVATION
NO SCALE

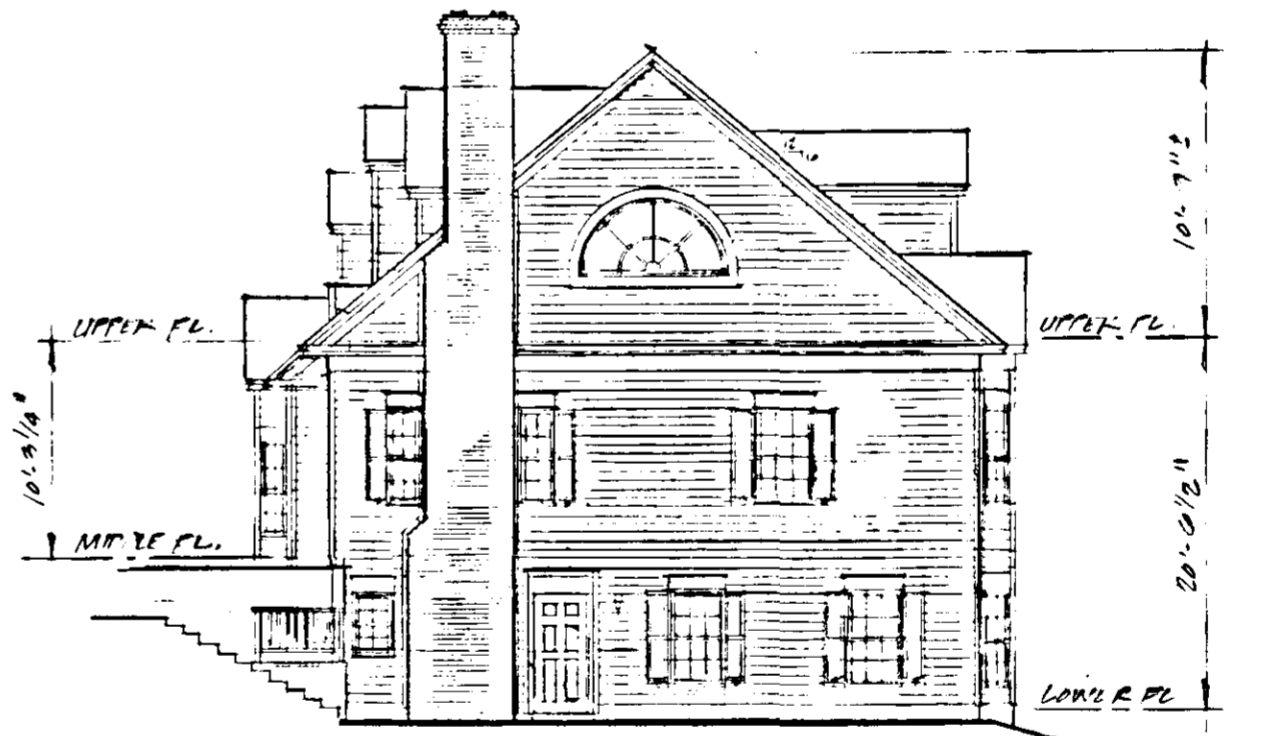


B ELEVATION
NO SCALE

PHASE I ELEVATIONS



SECTION
NO SCALE



C ELEVATION
NO SCALE



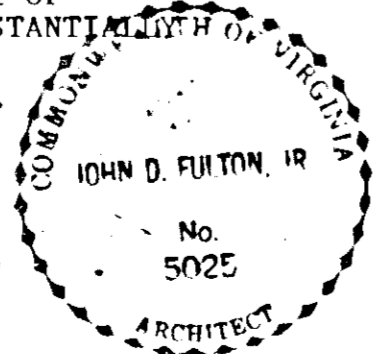
D ELEVATION
NO SCALE

ARCHITECT'S CERTIFICATE

I, **JOHN D. FULTON JR.**, A REGISTERED ARCHITECT IN THE COMMONWEALTH OF VIRGINIA, HEREBY CERTIFY THAT THIS PLAN ACCURATELY SHOWS THE UNITS DELINEATED AND IN ALL RESPECTS COMPLIES WITH THE PROVISIONS OF SECTION 55-79.58 (b) OF THE VIRGINIA CONDOMINIUM ACT. I FURTHER CERTIFY THAT UNLESS NOTED OTHERWISE, ALL UNITS DEPICTED HEREON, WITHIN PHASE I OF BURWELL PLACE CONDOMINIUM, HAVE BEEN SUBSTANTIALLY COMPLETED.

GIVEN UNDER MY HAND THIS 15 DAY OF June, 1987.

John D. Fulton Jr.
REGISTERED ARCHITECT



18 S. College Avenue
Salem, Virginia 24153
(703) 389-7323



- PLANNERS
- ARCHITECTS
- ENGINEERS
- SURVEYORS