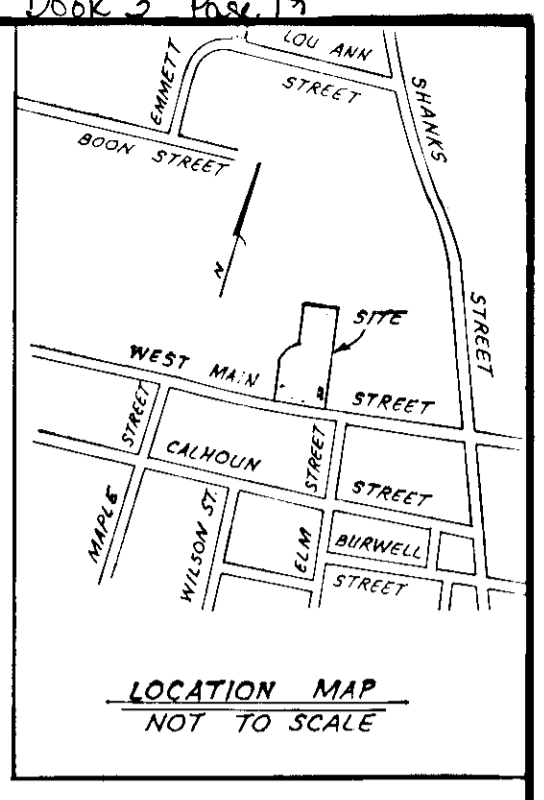
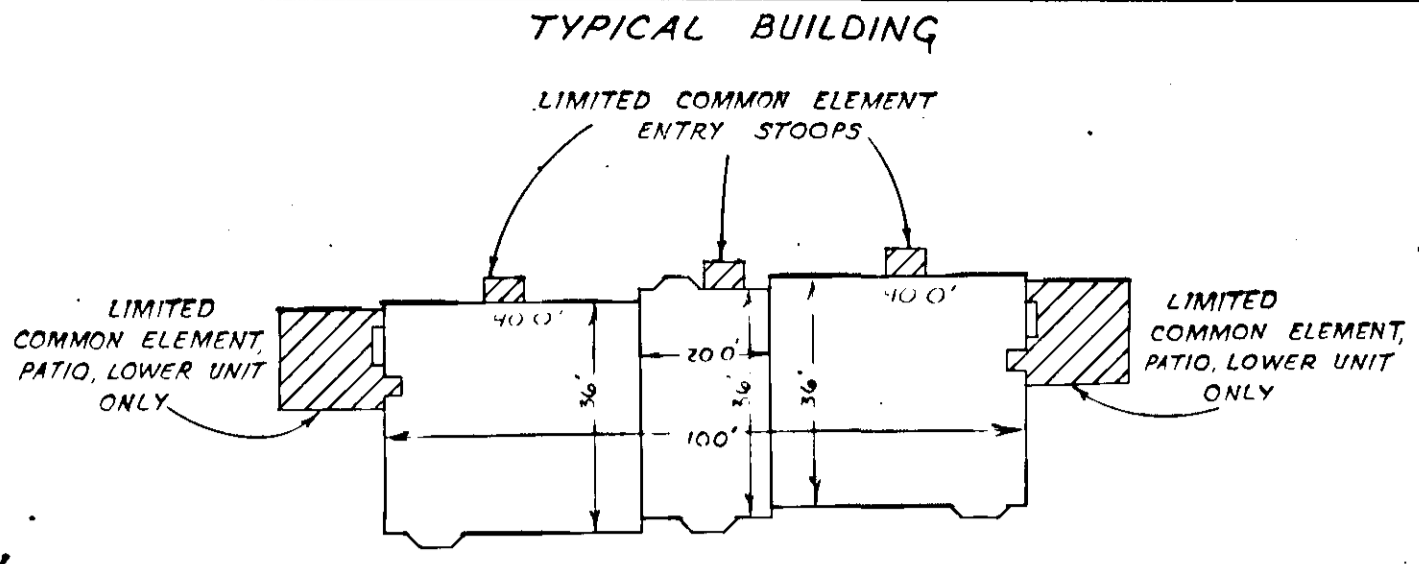


EXHIBIT A
1.092 ACRES
PHASE I

BURWELL PLACE CONDOMINIUM

SITUATED ON THE NORTH SIDE
OF WEST MAIN STREET
CITY OF SALEM, VIRGINIA
DATE: NOVEMBER 1, 1986
SHEET 1 OF 3

DECLARANT: WYCLIFFE DEVELOPMENT COMPANY

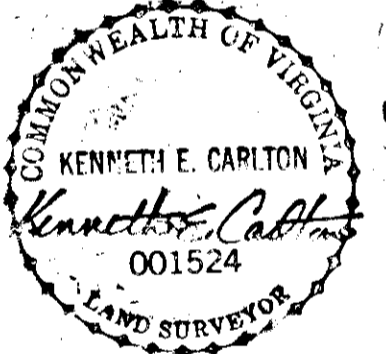


I HEREBY CERTIFY THIS PLAT AND PLAN OF CONDOMINIUM SUBDIVISION CONSISTING OF THREE (3) SHEETS, IS CORRECT. THAT IT IS A SUBDIVISION OF LAND AND BUILDINGS ENTITLED PHASE I BURWELL PLACE CONDOMINIUM AS RECORDED AMONG THE LAND RECORDS OF CITY OF SALEM, VIRGINIA IN DEED BOOK PAGE AND OF IMPROVEMENTS LOCATED THEREON CONSISTING OF ONE (1) BUILDING CONTAINING SEVEN (7) UNITS AND THAT IT HAS BEEN PREPARED PURSUANT TO AND IN COMPLIANCE WITH THE REQUIREMENTS AND PROVISIONS OF CHAPTER 42, IN TITLE 55-79, 58 (a) OF THE CODE OF VIRGINIA OF 1950. AS AMENDED, I.E. "THE CONDOMINIUM ACT". I FURTHER CERTIFY THAT THE LOCATIONS AND DIMENSIONS OF ALL EXISTING IMPROVEMENTS HAVE BEEN CAREFULLY ESTABLISHED BY A TRANSIT TAPE SURVEY AND THAT, UNLESS OTHERWISE SHOWN THERE ARE NO VISABLE ENCROACHMENTS. WE FURTHER CERTIFY THAT ALL CONDOMINIUM UNITS, OR PORTIONS THEREOF, DEPICTED ON THIS PLAT AND PLAN OF CONDOMINIUM SUBDIVISION HAVE BEEN SUBSTANTIALLY COMPLETED. THE TOTAL AREA INCLUDED WITHIN THE BOUNDS OF PHASE I BURWELL PLACE CONDOMINIUM IS 1.092 ACRES AND 2.233 ACRES OF CONVERTIBLE LAND.

Kenneth E. Carlton 6-25-87
KENNETH E. CARLTON, L.S. DATE

IN THE CLERK'S OFFICE OF THE CIRCUIT COURT OF THE CITY OF SALEM, VIRGINIA THIS PLAT WAS PRESENTED ON THIS 24th DAY OF June, 1987 AND WITH THE CERTIFICATE OF ACKNOWLEDGEMENT THERETO ANNEXED ADMITTED TO RECORD AT 1:10 O'CLOCK P. M.

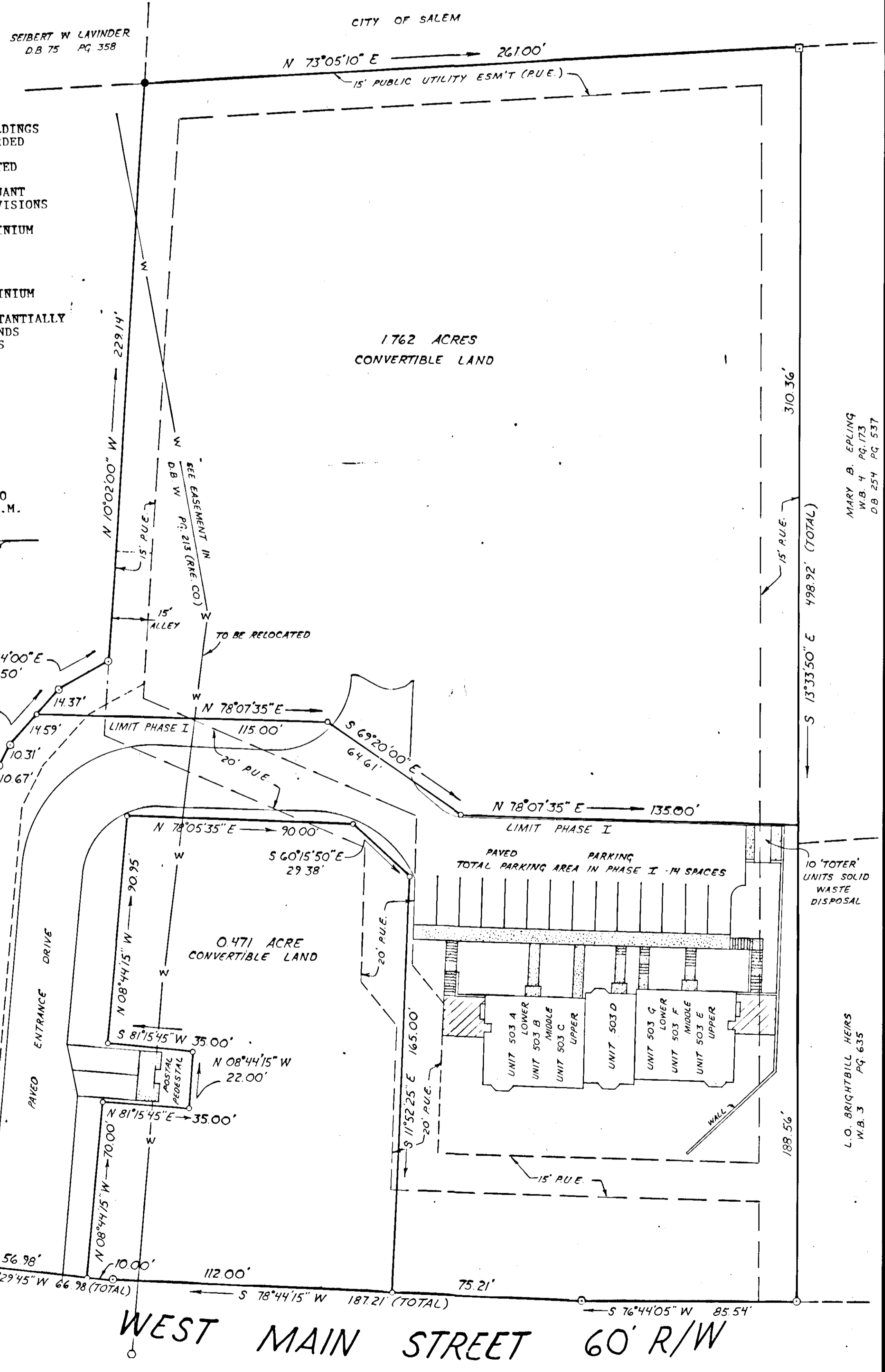
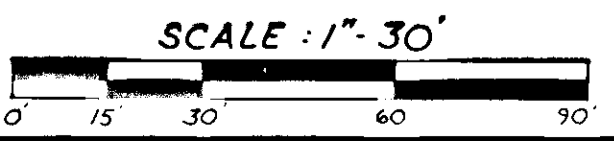
TESTES: James J. Joby BY Shirley H. Hensley
CLERK DEPUTY CLERK



MIRANDA FRANCES LAVINDER
HEIRS
D.B. 71 PG. 562

- NOTES
- 1. REFERENCE: DEED BOOK 116, PAGE 795
 - 2. TAX NO.: 123-1-4
 - 3. PROPERTY NOT IN ANY H.U.D. FLOOD HAZARD ZONE.

- LEGEND
- SURVEYED PROPERTY LINE
 - - - DEED LINE
 - FOUND IRON
 - SET IRON REBAR
 - CONCRETE MONUMENT
 - ▨ DENOTES CONCRETE



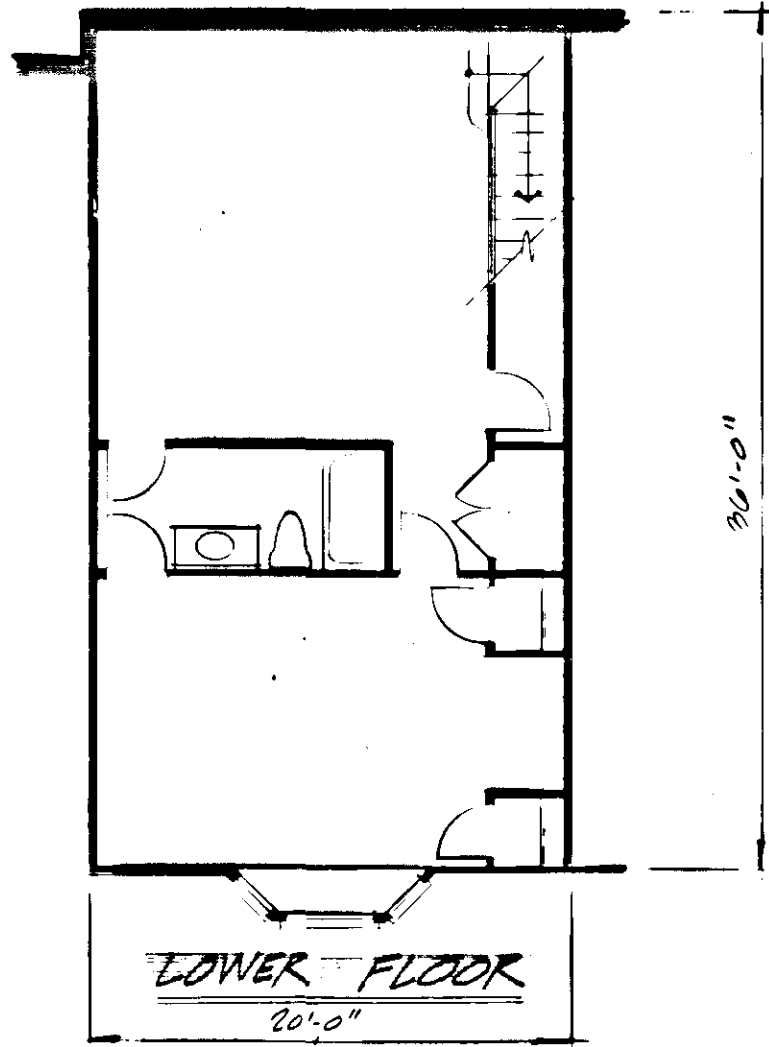
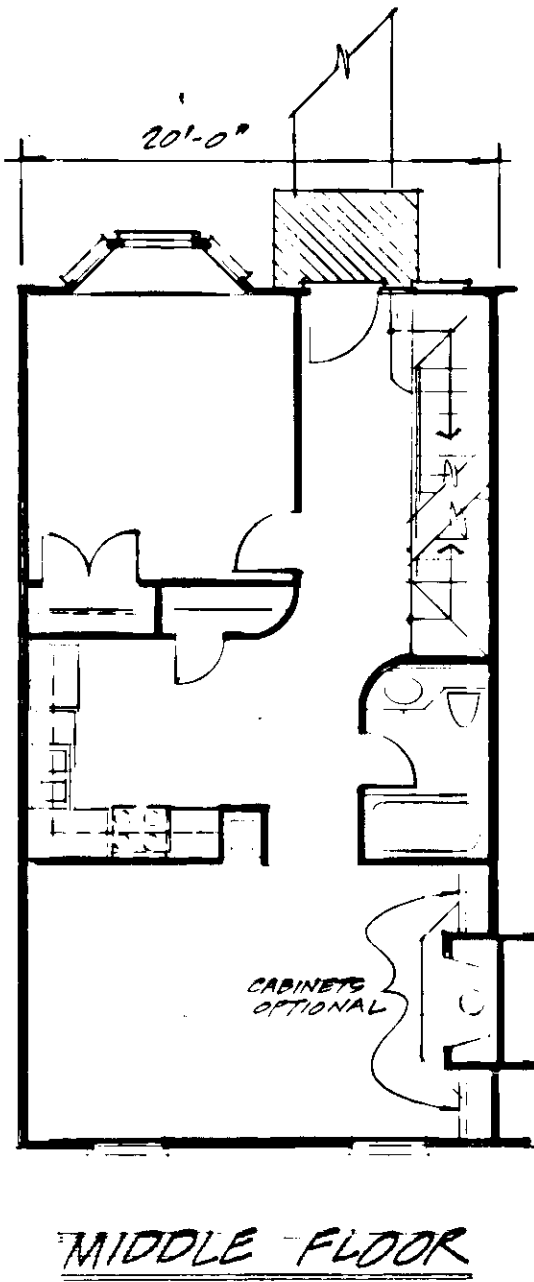
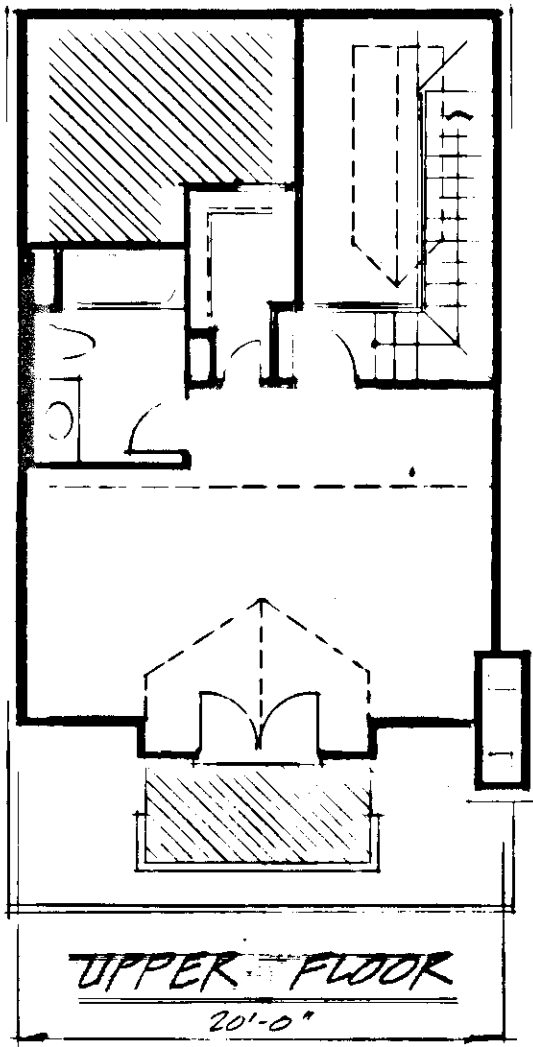
MARY B. EPLING
W.B. 4 PG. 173
D.B. 254 PG. 537

L.O. BRIGHTBILL HEIRS
W.B. 3 PG. 635

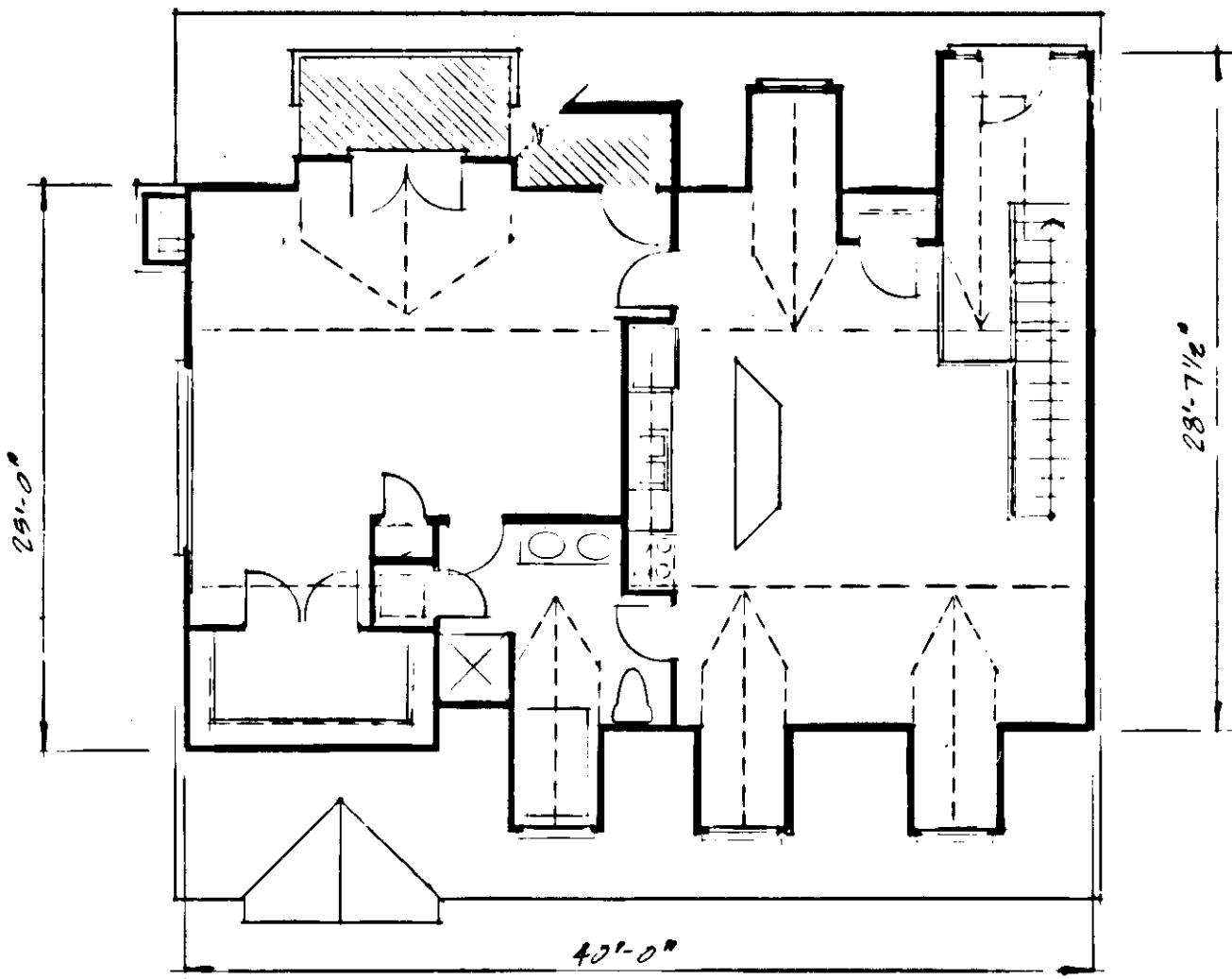
BURWELL PLACE CONDOMINIUM

SITUATED ON THE NORTH SIDE
OF WEST MAIN STREET
CITY OF SALEM, VIRGINIA
DATE: NOVEMBER 1, 1986
SHEET 2 OF 3

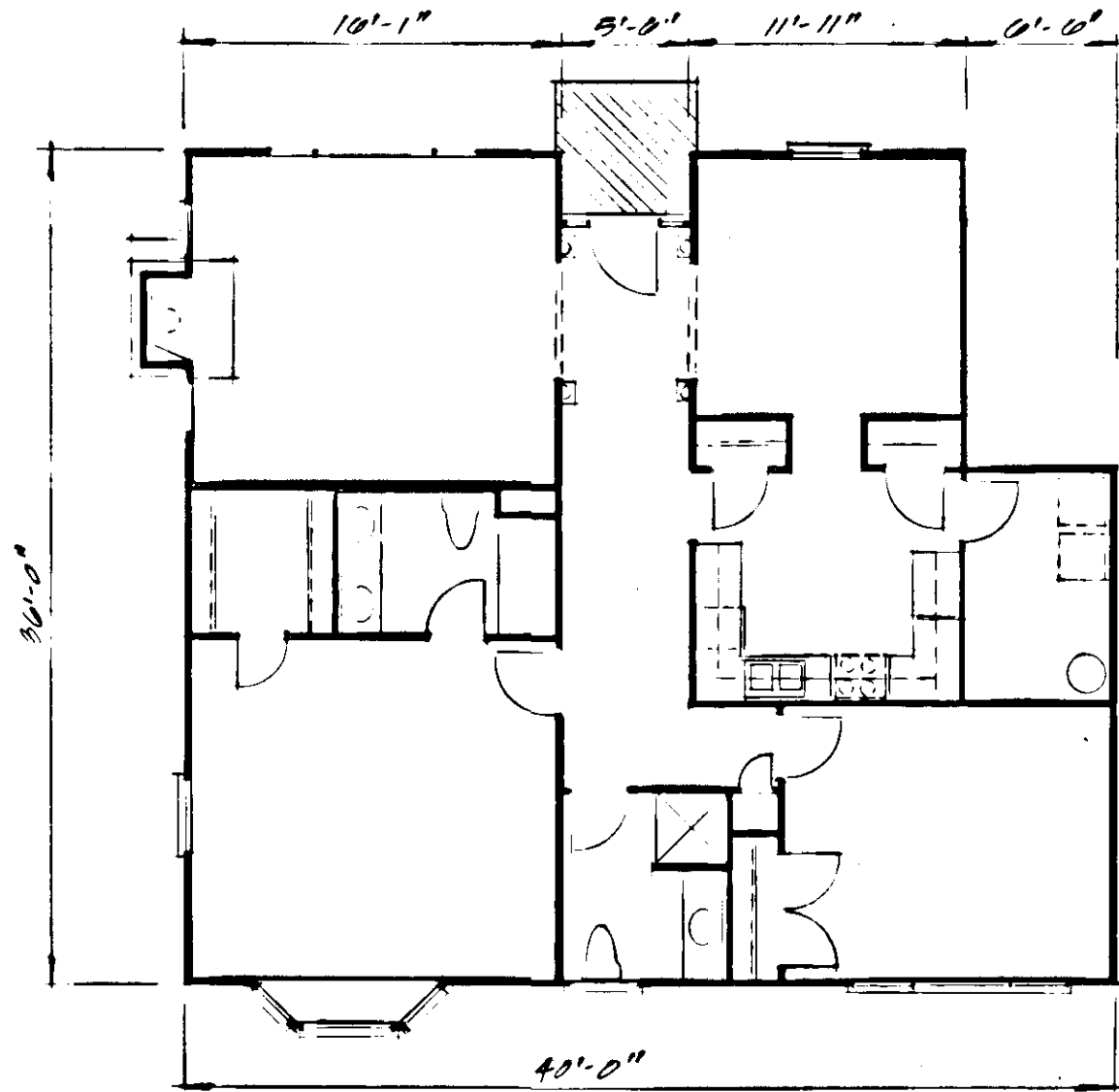
DECLARANT: WYCLIFFE DEVELOPMENT COMPANY



UNIT NO. 503-D
3 BEDROOM — 2091 SF.



UNIT NO. 503-C/E
1 BEDROOM — 1160 SF.



UNIT NO. 503-B/F
2 BEDROOM — 1337 SF.

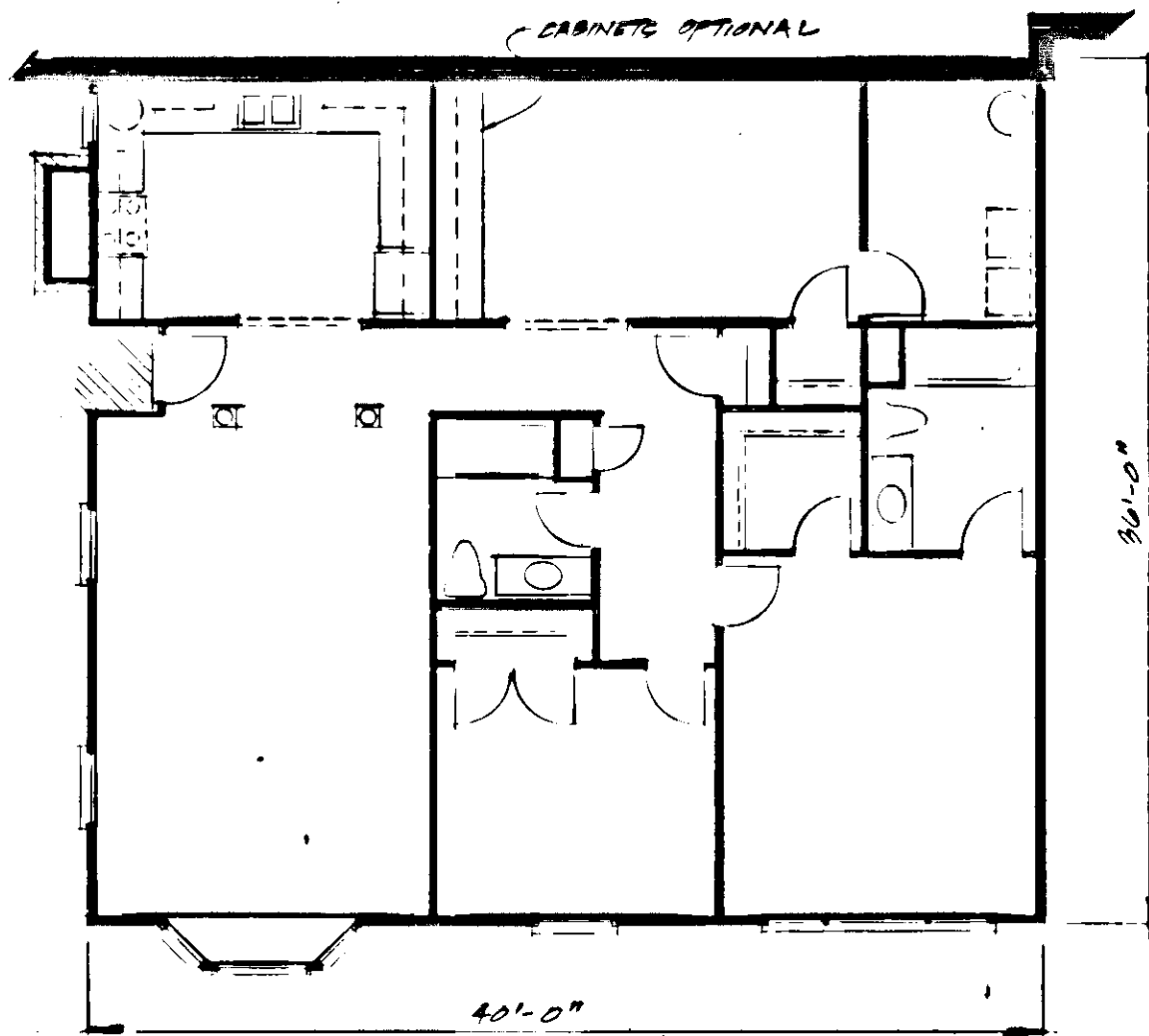
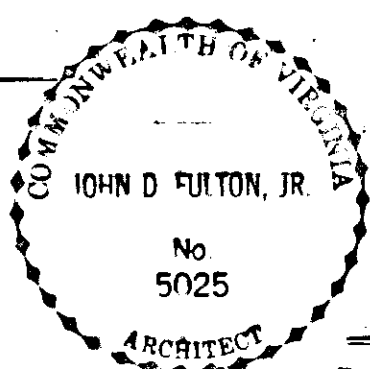
NOTE:
INCLUDED AS PART OF EACH UNIT
IS THE DRY WALL COVERING ENCLOSING
SUCH UNIT. ALL INTERIOR DIMENSIONS
SHOWN ON PLANS ARE MEASURED TO THE
INSIDE FACE OF STUDS..

ARCHITECT'S CERTIFICATE

I, **JOHN D. FULTON JR.**, A REGISTERED
ARCHITECT IN THE COMMONWEALTH OF VIRGINIA
HEREBY CERTIFY THAT THIS PLAN ACCURATELY SHOWS
THE UNITS DELINEATED AND IN ALL RESPECTS
COMPLIES WITH THE PROVISIONS OF SECTION
55-79.58 (b) OF THE VIRGINIA CONDOMINIUM ACT.
I FURTHER CERTIFY THAT UNLESS NOTED OTHERWISE,
ALL UNITS DEPICTED HEREON, WITHIN PHASE I OF
BURWELL PLACE CONDOMINIUM, HAVE BEEN SUBSTANTIALLY
COMPLETED.

GIVEN UNDER MY HAND THIS 25th DAY
OF June, 1987.

John D. Fulton Jr.
REGISTERED ARCHITECT



UNIT NO. 503-A/G
2 BEDROOM — 1452 SF.

DENOTES LIMITED COMMON ELEMENT

PHASE I FLOOR PLANS

SCALE — 1/8" = 1'-0"

78 S. College Avenue
Salem, Virginia 24153
(703) 389-7323

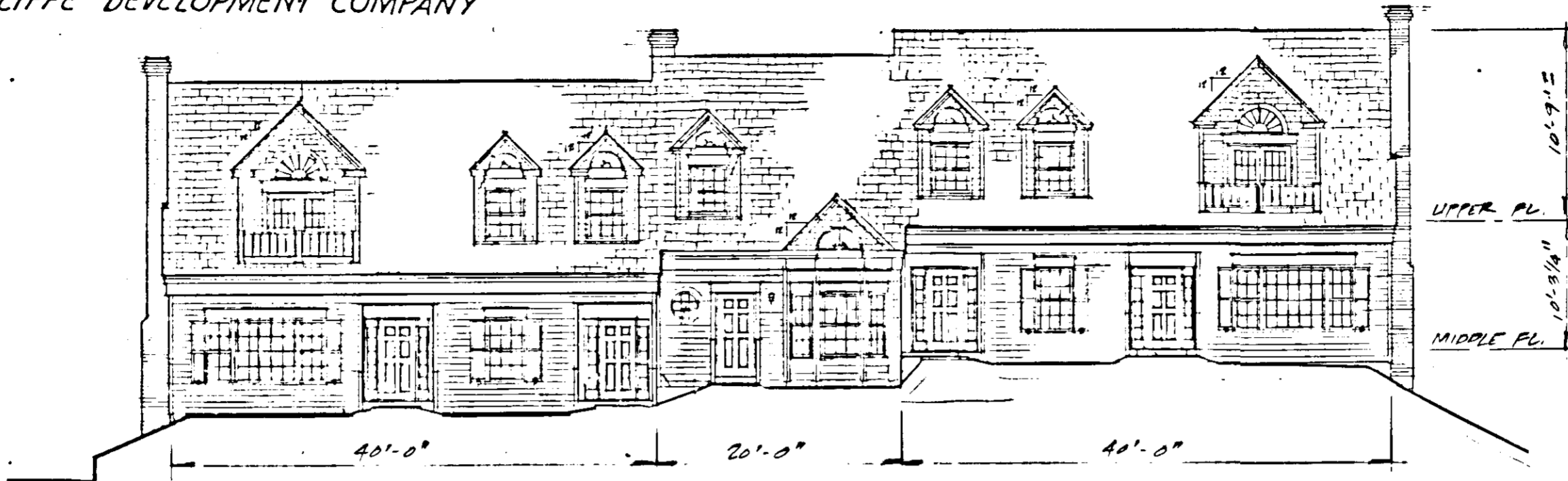


- PLANNERS
- ARCHITECTS
- ENGINEERS
- SURVEYORS

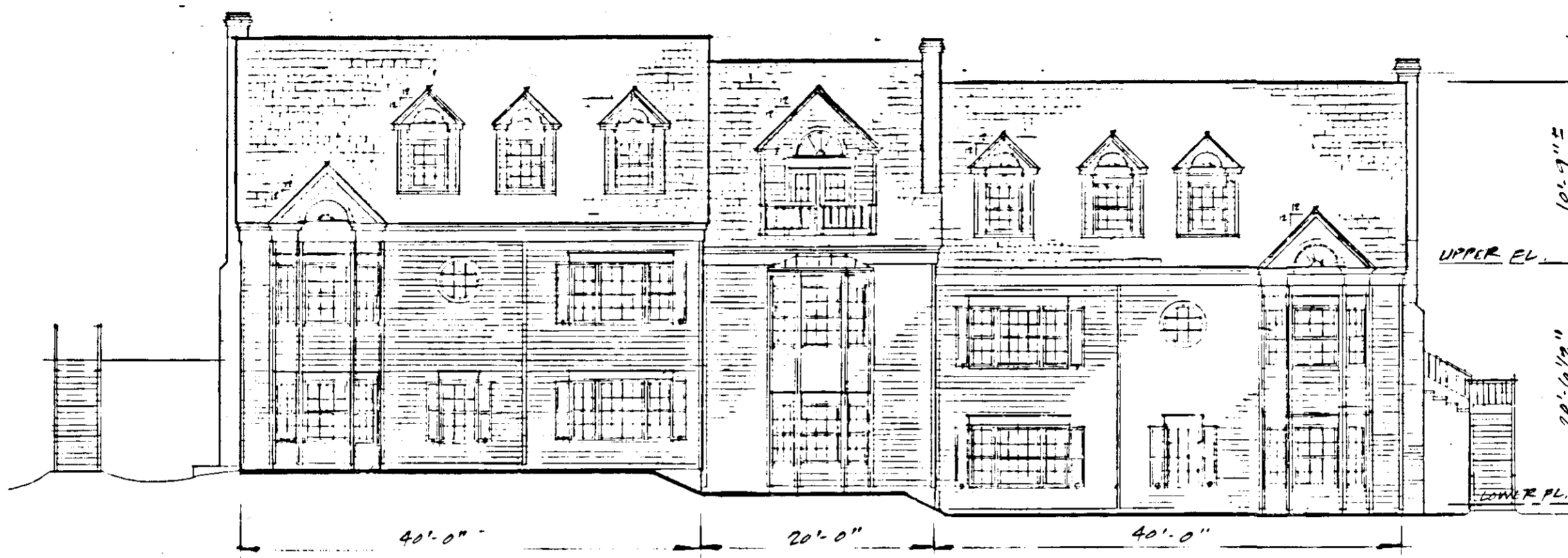
BURWELL PLACE CONDOMINIUM

SITUATED ON THE NORTH SIDE
OF WEST MAIN STREET
CITY OF SALEM, VIRGINIA
DATE: NOVEMBER 1, 1986
SHEET 3 OF 3

DECLARANT: WYCLIFFE DEVELOPMENT COMPANY

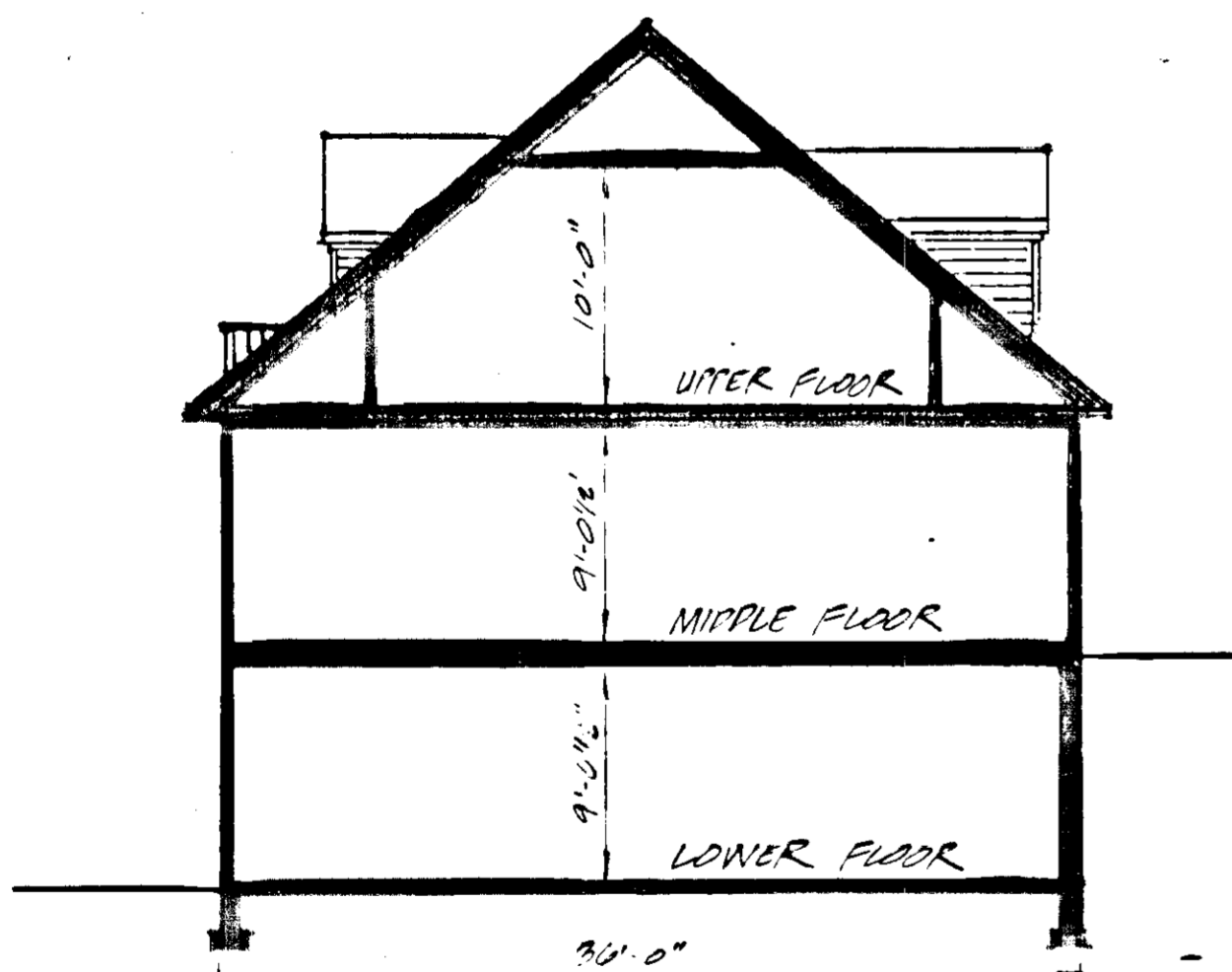


A ELEVATION
NO SCALE

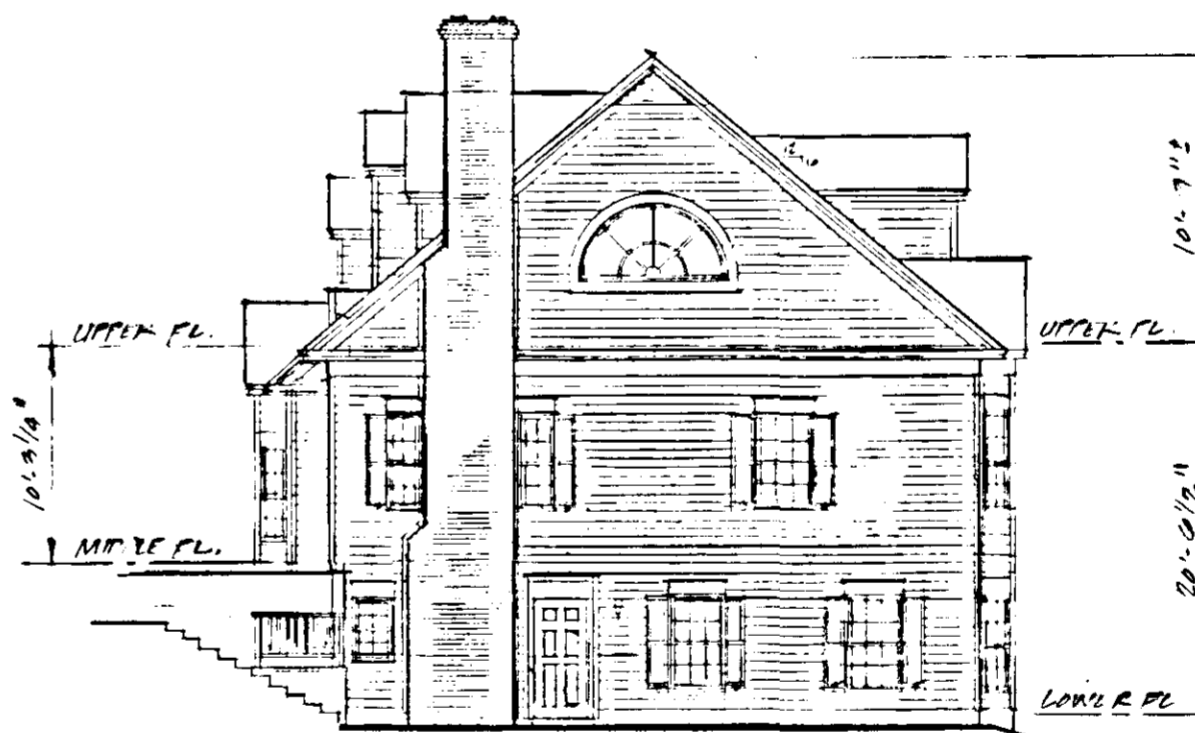


B ELEVATION
NO SCALE

PHASE I ELEVATIONS



SECTION
NO SCALE



C ELEVATION
NO SCALE



D ELEVATION
NO SCALE

ARCHITECT'S CERTIFICATE

I, **JOHN D. FULTON JR.**, A REGISTERED ARCHITECT IN THE COMMONWEALTH OF VIRGINIA, HEREBY CERTIFY THAT THIS PLAN ACCURATELY SHOWS THE UNITS DELINEATED AND IN ALL RESPECTS COMPLIES WITH THE PROVISIONS OF SECTION 55-79.58 (b) OF THE VIRGINIA CONDOMINIUM ACT. I FURTHER CERTIFY THAT UNLESS NOTED OTHERWISE, ALL UNITS DEPICTED HEREON, WITHIN PHASE I OF BURWELL PLACE CONDOMINIUM, HAVE BEEN SUBSTANTIALLY COMPLETED.

GIVEN UNDER MY HAND THIS 15 DAY OF June, 1987.

John D. Fulton Jr.
REGISTERED ARCHITECT



18 S. College Avenue
Salem, Virginia 24153
(703) 389-7323



- PLANNERS
- ARCHITECTS
- ENGINEERS
- SURVEYORS