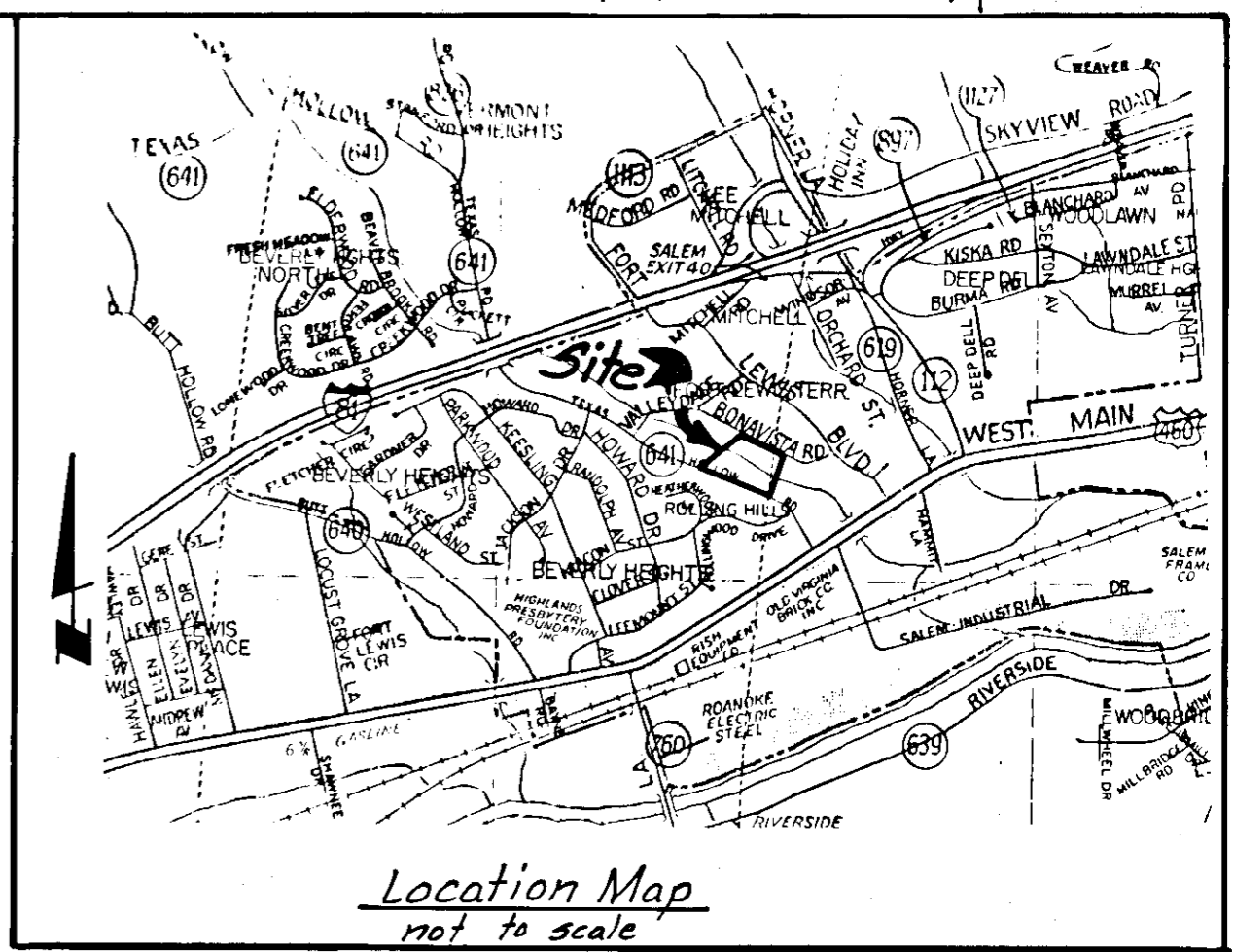
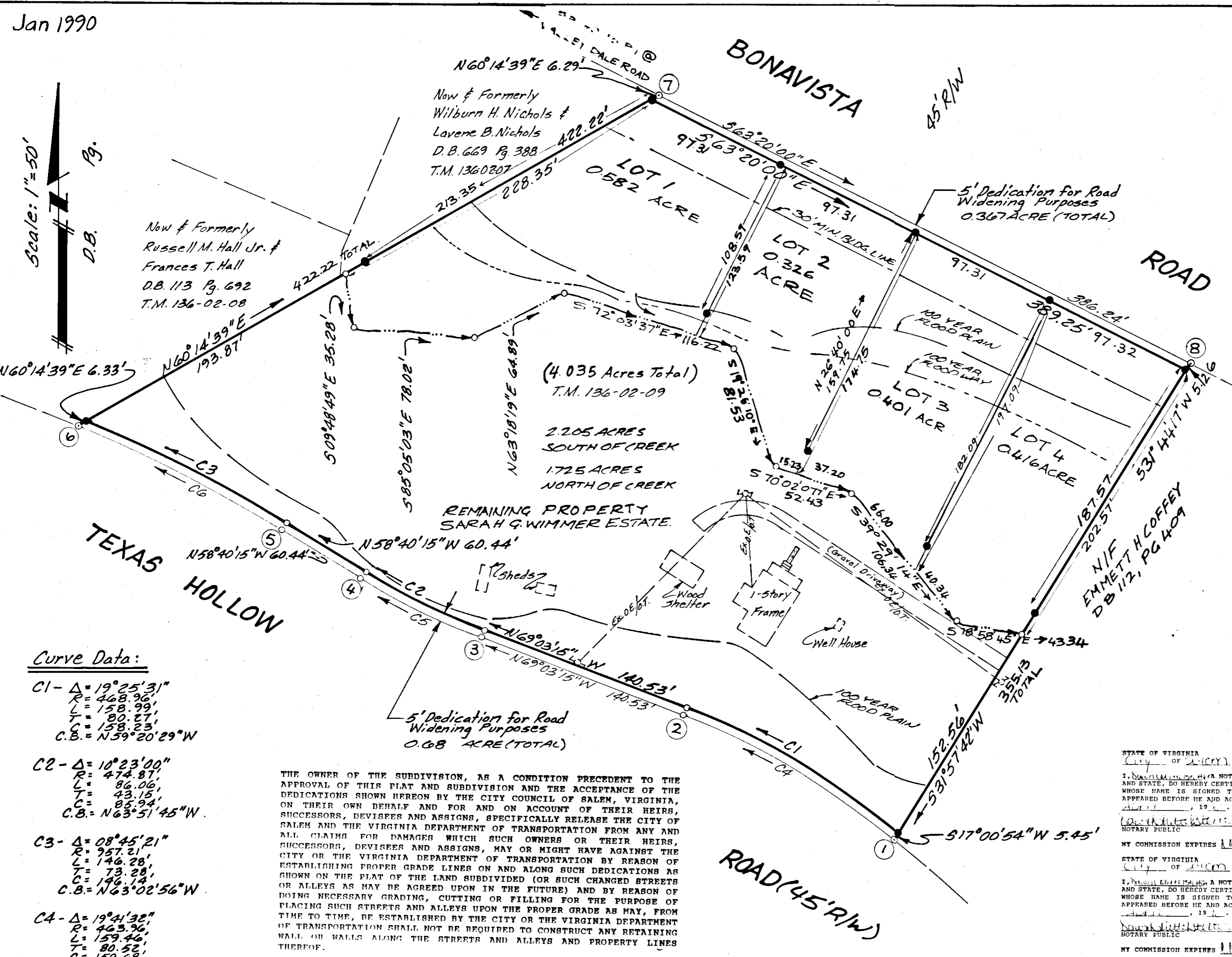


Jan 1990

Scale: 1"=50'  
D.B. Pg.



KNOW ALL MEN BY THESE PRESENT TO WIT:

THAT JACK D. WIMMER, LORRAINE W. BOWLES, DORA DEAN SUTPHIN AND LEWIS W. WIMMER, JR. ARE THE FEE SIMPLE OWNERS OF THE LAND TO BE SUBDIVIDED SHOWN HEREON BOUNDED BY CORNERS 1 THROUGH 8 TO 1, INCLUSIVE AND IS THE LAND CONVEYED TO SAID OWNERS IN WILL BOOK 3, PAGE 416, MRS. SARAH WIMMER HAVING PASSED AWAY SEPTEMBER 4, 1988, AND RECORDED IN THE CLERK'S OFFICE OF THE CIRCUIT COURT OF THE CITY OF SALEM, VIRGINIA.

THE PLATTING AS SHOWN HEREON IS WITH THE FREE WILL AND CONSENT AND IS IN ACCORDANCE WITH THE DESIRE OF THE UNDERSIGNED OWNERS AND IS IN COMPLIANCE WITH SECTIONS 15.1-427 AND 15.1-503, CODE OF VIRGINIA AS AMENDED TO DATE AND IN COMPLIANCE WITH THE SUBDIVISION REQUIREMENTS OF THE CITY OF SALEM, VIRGINIA, AS AMENDED TO DATE.

WITNESS THE FOLLOWING SIGNATURES AND SEALS ON THIS 18th DAY OF APRIL, 1990.

*Jack D. Wimmer*  
JACK D. WIMMER

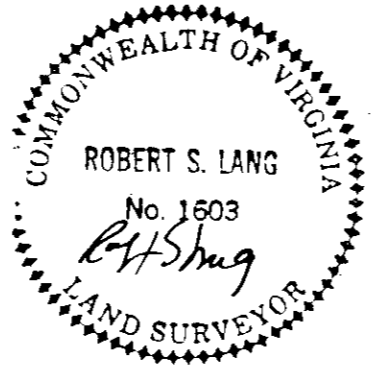
*Lorraine W. Bowles*  
LORRAINE W. BOWLES

*Dora Dean Sutphin*  
DORA DEAN SUTPHIN

*Lewis W. Wimmer, Jr.*  
LEWIS W. WIMMER, JR.

- Curve Data:**
- C1 - Δ = 19° 25' 31"  
R = 468.96'  
L = 158.99'  
T = 80.27'  
C = 158.23'  
C.B. = N59° 20' 29" W
  - C2 - Δ = 10° 23' 00"  
R = 474.87'  
L = 86.06'  
T = 43.15'  
C = 85.94'  
C.B. = N63° 51' 45" W
  - C3 - Δ = 08° 45' 21"  
R = 957.21'  
L = 146.28'  
T = 73.28'  
C = 146.14'  
C.B. = N63° 02' 56" W
  - C4 - Δ = 19° 41' 32"  
R = 463.96'  
L = 159.46'  
T = 80.27'  
C = 158.23'  
C.B. = N59° 12' 29" W
  - C5 - Δ = 10° 23' 00"  
R = 474.87'  
L = 86.06'  
T = 43.15'  
C = 85.94'  
C.B. = N63° 51' 45" W
  - C6 - Δ = 08° 59' 19"  
R = 952.21'  
L = 149.38'  
T = 74.85'  
C = 149.85'  
C.B. = N63° 09' 55" W

THE OWNER OF THE SUBDIVISION, AS A CONDITION PRECEDENT TO THE APPROVAL OF THIS PLAT AND SUBDIVISION AND THE ACCEPTANCE OF THE DEDICATIONS SHOWN HEREON BY THE CITY COUNCIL OF SALEM, VIRGINIA, ON THEIR OWN BEHALF AND FOR AND ON ACCOUNT OF THEIR HEIRS, SUCCESSORS, DEVISEES AND ASSIGNS, SPECIFICALLY RELEASE THE CITY OF SALEM AND THE VIRGINIA DEPARTMENT OF TRANSPORTATION FROM ANY AND ALL CLAIMS FOR DAMAGES WHICH SUCH OWNERS OR THEIR HEIRS, SUCCESSORS, DEVISEES AND ASSIGNS, MAY OR MIGHT HAVE AGAINST THE CITY OR THE VIRGINIA DEPARTMENT OF TRANSPORTATION BY REASON OF ESTABLISHING PROPER GRADE LINES ON AND ALONG SUCH DEDICATIONS AS SHOWN ON THE PLAT OF THE LAND SUBDIVIDED (OR SUCH CHANGED STREETS OR ALLEYS AS MAY BE AGREED UPON IN THE FUTURE) AND BY REASON OF PLACING SUCH STREETS AND ALLEYS UPON THE PROPER GRADE AS MAY, FROM TIME TO TIME, BE ESTABLISHED BY THE CITY OR THE VIRGINIA DEPARTMENT OF TRANSPORTATION SHALL NOT BE REQUIRED TO CONSTRUCT ANY RETAINING WALL OR WALLS ALONG THE STREETS AND ALLEYS AND PROPERTY LINES THEREOF.



IN THE CLERK'S OFFICE OF THE CIRCUIT COURT OF THE CITY OF SALEM, VIRGINIA, THIS MAP WAS PRESENTED ON THIS 26 DAY OF APRIL, 1990, AND WITH THE CERTIFICATES OF DEDICATION AND ACKNOWLEDGEMENTS THERETO ATTACHED TO RECORD AT 2:02 O'CLOCK P.M.

TESTE: *John Lee Hagg* - Clerk  
Clerk

*John D. Albott* 4-25-90  
ENGINEER DATE  
CITY OF SALEM

*Forest Jones* 4-26-90  
SECRETARY DATE  
CITY OF SALEM

SUBDIVISION PLAT OF  
**SARAH G. WIMMER ESTATE**

SITUATE ON THE SOUTH SIDE OF  
BONAVISTA ROAD  
CITY OF SALEM, VIRGINIA  
DATED FEBRUARY 27, 1990  
JOB NUMBER 891250005

