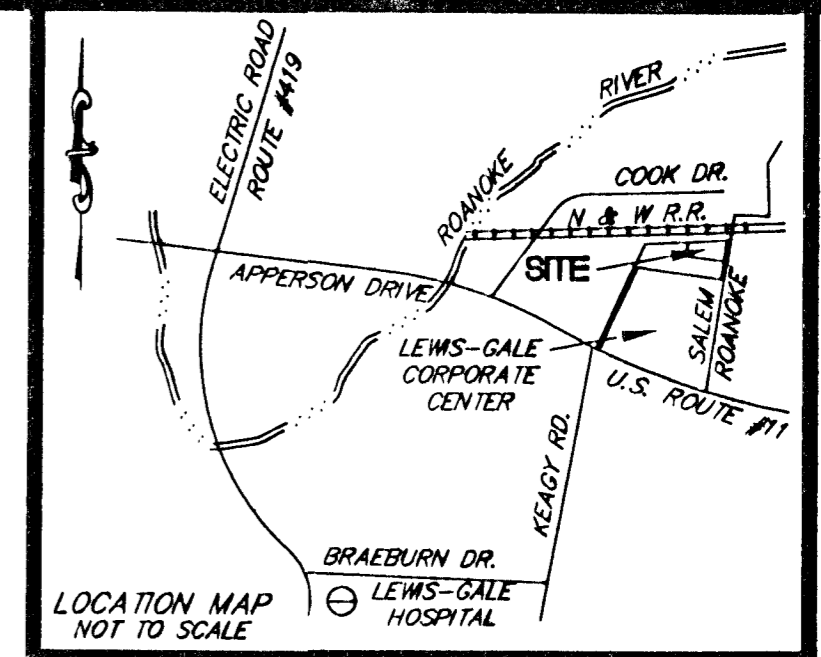


08136base-layout.plt

NOTES:

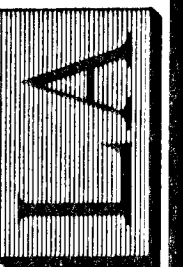
1. THIS PLAT IS BASED ON A CURRENT FIELD SURVEY PERFORMED MAY 15, 2008.
2. THE PROPERTY SHOWN HEREON FALLS WITHIN LIMITS OF A SPECIAL FLOOD HAZARD AREA AS DESIGNATED BY FEMA. THIS OPINION IS BASED ON AN INSPECTION OF THE FLOOD INSURANCE RATE MAPS AND HAS BEEN VERIFIED BY ACTUAL FIELD ELEVATIONS. SEE COMMUNITY PANEL #510141 0144 G, MAP #51161C0144 G, DATED SEPTEMBER 28, 2007. "ZONES AE & X"
3. THIS PLAT DOES NOT GUARANTEE THE EXISTENCE OR LOCATION OF ANY UNDERGROUND UTILITIES. STORM DRAIN STRUCTURES, SANITARY SEWER MANHOLES, AND ALL OTHER SURFACE UTILITIES WERE FIELD LOCATED.
4. THIS SURVEY WAS PERFORMED WITHOUT THE BENEFIT OF A CURRENT TITLE REPORT AND THEREFORE MAY NOT SHOW ALL EASEMENTS OR ENCUMBRANCES TO THE SUBJECT PROPERTY.
5. LEGAL REFERENCES: INSTRUMENT #050002549; SLIDE 187, P.B. 10, PG. 94 & 95.



PHONE: (540) 774-4411
 FAX: (540) 772-9445
 E-MAIL: MAIL@LUMSDENPC.COM

4664 BRAMBLETON AVENUE, SW
 P.O. BOX 20669
 ROANOKE, VIRGINIA 24018

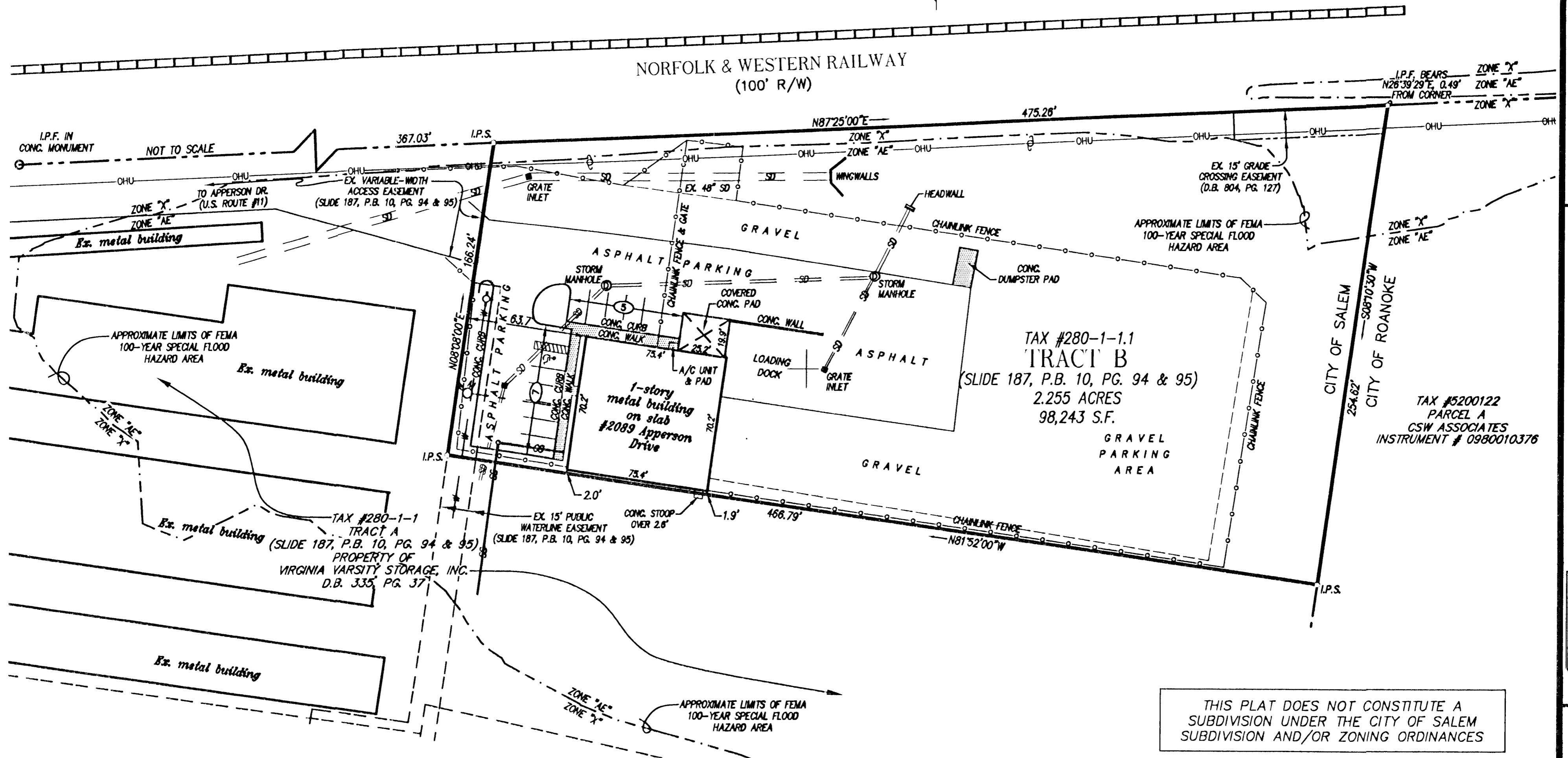
LUMSDEN ASSOCIATES, P.C.
 ENGINEERS-SURVEYORS-PLANNERS
 ROANOKE, VIRGINIA



DATE: May 21, 2008
 COMM. NO.: 08-196
 SCALE: 1" = 40'

SHEET 1 OF 1

MERIDIAN OF P.B. 2, PG. 55



THIS PLAT DOES NOT CONSTITUTE A SUBDIVISION UNDER THE CITY OF SALEM SUBDIVISION AND/OR ZONING ORDINANCES

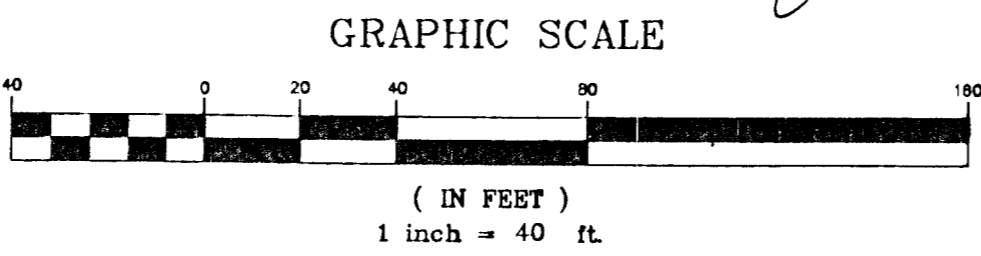
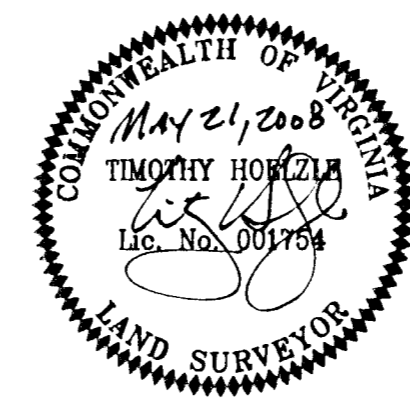
LEGEND	
[Symbol]	GRATE INLET
[Symbol]	NUMBER OF PARKING SPACES
[Symbol]	DRAINAGE MANHOLE
[Symbol]	UTILITY POLE
[Symbol]	HANDICAP PARKING SPACE
[Symbol]	ASPHALT PARKING
[Symbol]	CONCRETE
[Symbol]	WATER METER
[Symbol]	FIRE HYDRANT
[Symbol]	CHAINLINK FENCE
[Symbol]	OVERHEAD UTILITIES

ABBREVIATIONS	
EX.	EXISTING
CONC.	CONCRETE
I.P.F.	IRON PIN FOUND
I.P.S.	IRON PIN SET
P.B.	PLAT BOOK
D.B.	DEED BOOK
PG.	PAGE
R/W	RIGHT-OF-WAY
AC.	ACRES
S.F.	SQUARE FEET
SS	SANITARY SEWER LINE
SD	STORM DRAIN LINE
W	WATER LINE
A/C	AIR CONDITIONING

IN THE CLERK'S OFFICE OF THE CIRCUIT COURT OF SALEM, VIRGINIA, THIS PLAT WITH THE CERTIFICATE OF ACKNOWLEDGMENT AND DEDICATION THERETO ANNEXED IS ADMITTED TO RECORD ON 6-5 2008, AT 10:40 O'CLOCK A.M.

TESTEE: GARY CHANCE CRAWFORD

Gary Chance Crawford
 DEPUTY CLERK



AS-BUILT SURVEY OF
 TRACT "B" (2.255 ACRES)
 (SLIDE 187, PLAT BOOK 10, PAGE 94 & 95)
 PROPERTY OF
**VIRGINIA VARSITY
 TRANSFER, INC.**
 (INSTRUMENT #050002549)
 SITUATED AT 2089 APPERSON DRIVE
 CITY OF SALEM, VIRGINIA

w:\drawings\2008\08136\sur\08136base.dwg