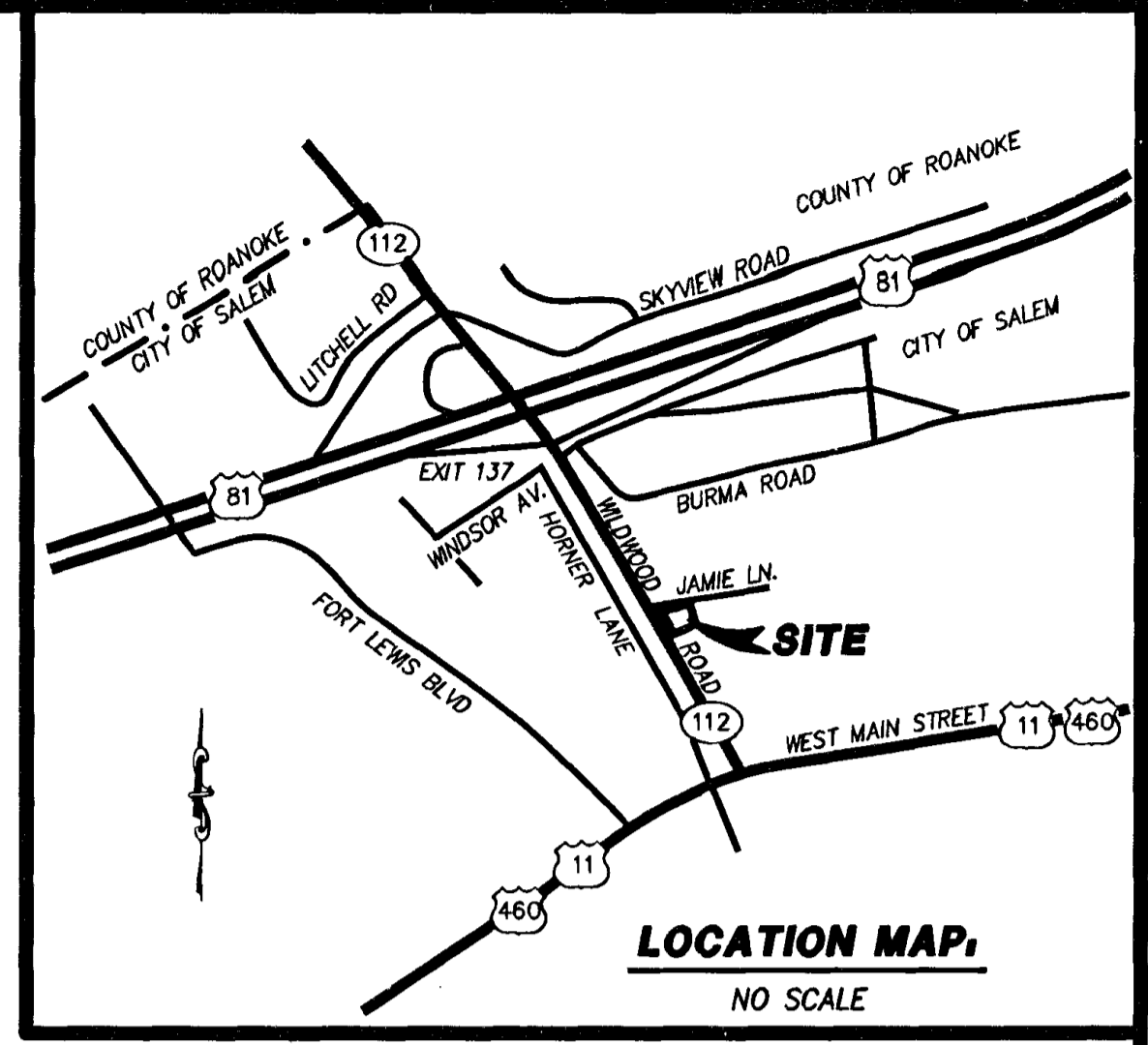
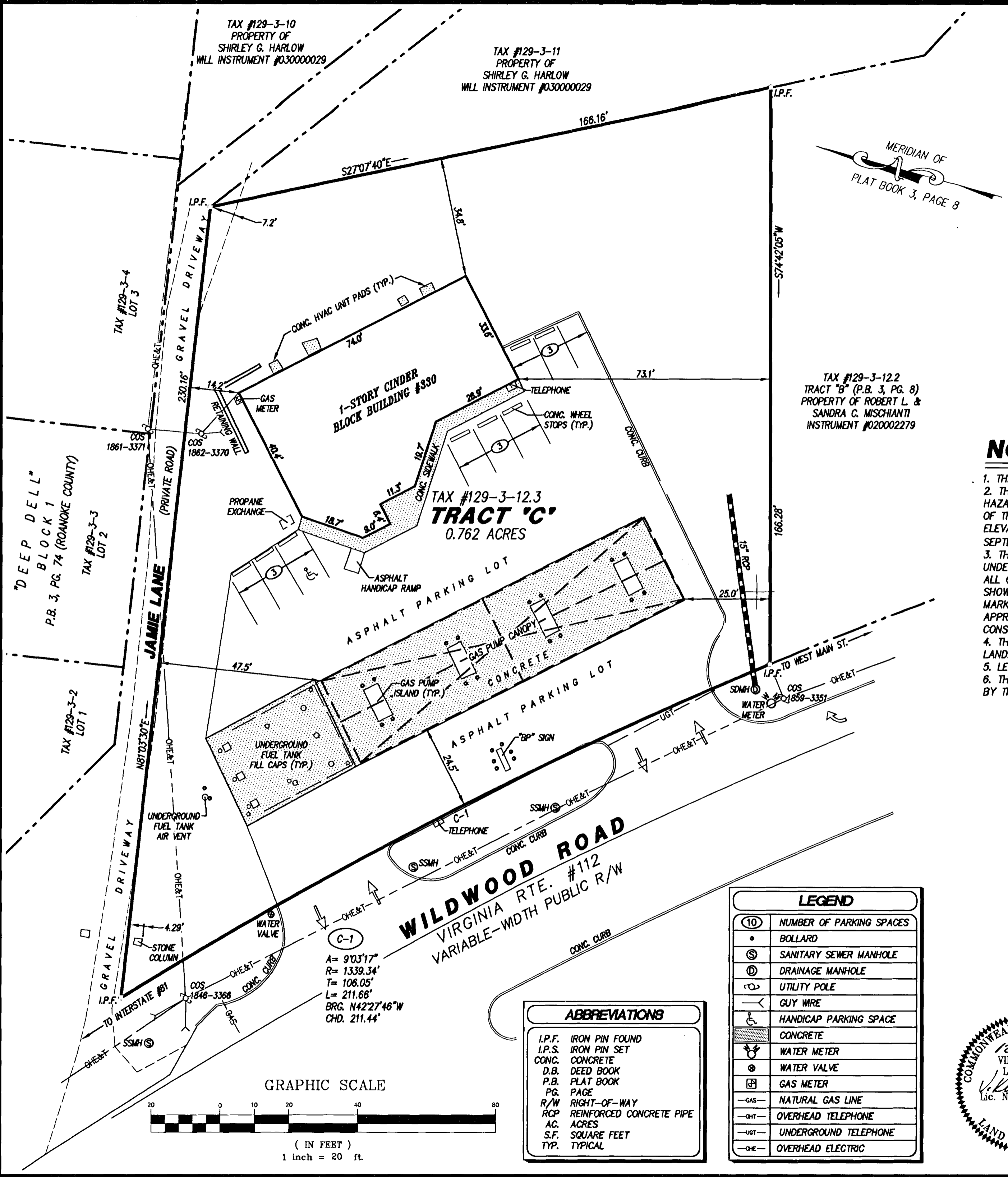


08312bas1-20 scale.plt

w:\drawings\2008\08312\sur\08312bas1.dwg



NOTES:

1. THIS PLAT IS BASED ON A CURRENT FIELD SURVEY PERFORMED DECEMBER 22, 2008.
2. THE PROPERTY SHOWN HEREON DOES NOT FALL WITHIN LIMITS OF A SPECIAL FLOOD HAZARD AREA AS DESIGNATED BY FEMA. THIS OPINION IS BASED ON AN INSPECTION OF THE FLOOD INSURANCE RATE MAPS AND HAS NOT BEEN VERIFIED BY ACTUAL FIELD ELEVATIONS. SEE COMMUNITY PANEL #510141 0136 G, MAP #51161C0136 G, DATED SEPTEMBER 28, 2007. "ZONE X" (UNSHADED)
3. THIS PLAT DOES NOT GUARANTEE THE EXISTENCE OR LOCATION OF ANY UNDERGROUND UTILITIES. STORM DRAIN STRUCTURES, SANITARY SEWER MANHOLES, AND ALL OTHER SURFACE UTILITIES WERE FIELD LOCATED. ALL UNDERGROUND UTILITIES SHOWN HEREON WERE ESTABLISHED USING ABOVE GROUND STRUCTURES, PAINTED MARKINGS OR AVAILABLE UTILITY MAPS. ALL UNDERGROUND UTILITY LINES ARE APPROXIMATE AND SHOULD BE FIELD VERIFIED PRIOR TO THE START OF ANY CONSTRUCTION.
4. THIS SURVEY WAS PERFORMED WITH THE BENEFIT OF A CURRENT TITLE REPORT BY LANDAMERICA, CASE #R-56681-85-00-023011, EFFECTIVE NOVEMBER 13, 2008.
5. LEGAL REFERENCE: INSTRUMENT #030003546
6. THIS PLAT WAS PREPARED IN ACCORDANCE WITH THE REQUIREMENTS SET FORTH BY THE COMMONWEALTH OF VIRGINIA FOR PHYSICAL IMPROVEMENT SURVEYS.

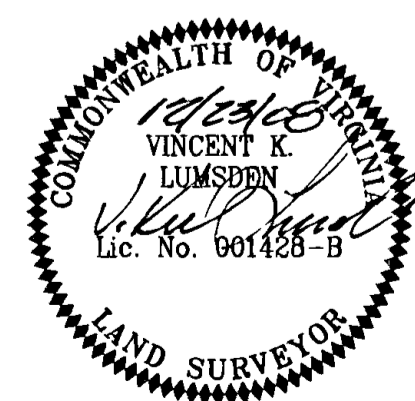
CLERK'S CERTIFICATE:

IN THE CLERK'S OFFICE OF THE CIRCUIT COURT OF THE CITY OF SALEM, VIRGINIA, THIS PLAT WITH THE CERTIFICATE OF ACKNOWLEDGMENT THERETO ANNEXED IS ADMITTED TO RECORD ON Jan. 6, 2009 2008- AT 12:14 O'CLOCK P.M.

TESTEE: *[Signature]*
CLERK

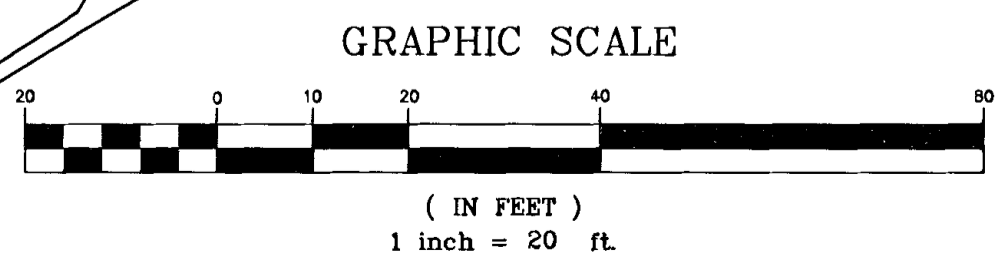
THIS PLAT DOES NOT CONSTITUTE A SUBDIVISION OF LAND UNDER THE CITY OF SALEM LAND SUBDIVISION AND/OR ZONING ORDINANCES.

AS-BUILT SURVEY OF
TRACT "C" (0.762 AC.)
PLAT OF "112 PARK" (P.B. 3, PG. 8)
PROPERTY OF
OMISH, LLC
SITUATED AT 330 WILDWOOD ROAD
CITY OF SALEM, VIRGINIA



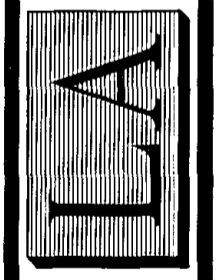
LEGEND	
(10)	NUMBER OF PARKING SPACES
•	BOLLARD
⊙	SANITARY SEWER MANHOLE
⊕	DRAINAGE MANHOLE
⊙	UTILITY POLE
—	GUY WIRE
♿	HANDICAP PARKING SPACE
⊕	CONCRETE
⊕	WATER METER
⊕	WATER VALVE
⊕	GAS METER
—GAS—	NATURAL GAS LINE
—OHT—	OVERHEAD TELEPHONE
—UGT—	UNDERGROUND TELEPHONE
—OHE—	OVERHEAD ELECTRIC

ABBREVIATIONS	
I.P.F.	IRON PIN FOUND
I.P.S.	IRON PIN SET
CONC.	CONCRETE
D.B.	DEED BOOK
P.B.	PLAT BOOK
PG.	PAGE
R/W	RIGHT-OF-WAY
RCP	REINFORCED CONCRETE PIPE
AC.	ACRES
S.F.	SQUARE FEET
TYP.	TYPICAL



PHONE: (540) 774-4411
FAX: (540) 772-9445
E-MAIL: MAIL@LUMSDENPC.COM
4664 BRAMBLETON AVENUE, SW
P.O. BOX 20669
ROANOKE, VIRGINIA 24018

LUMSDEN ASSOCIATES, P.C.
ENGINEERS-SURVEYORS-PLANNERS
ROANOKE, VIRGINIA



DATE: December 23, 2008
COMM. NO.: 08-312
SCALE: 1" = 20'
SHEET 1 OF 1