

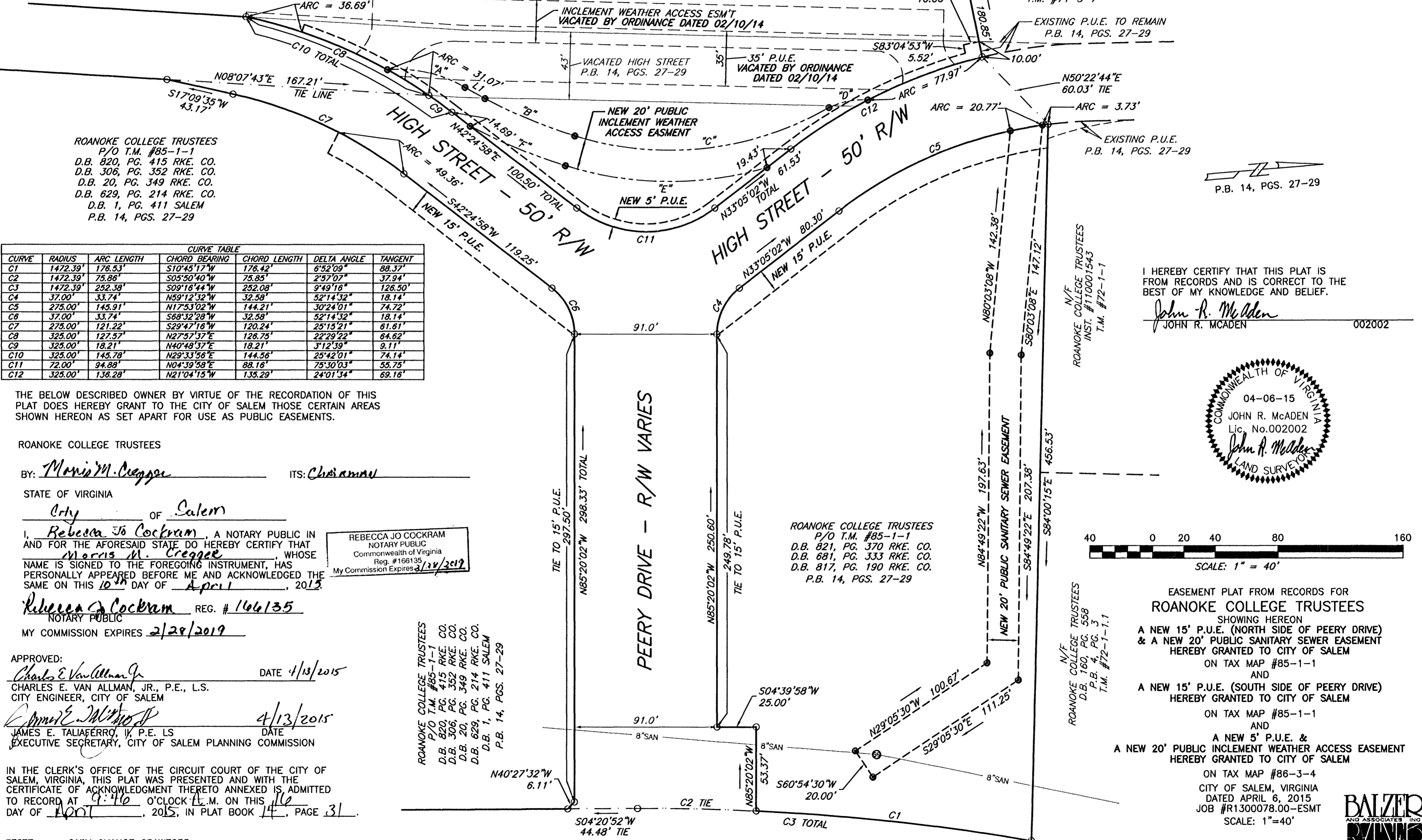
CURVE	RADIUS	ARC LENGTH	CHORD BEARING	CHORD LENGTH	DELTA ANGLE	TANGENT
"A"	83.16'	51.45'	N17°30'21"E	50.63'	35°26'49"	26.58'
"B"	339.50'	62.11'	N27°30'47"E	62.03'	10°28'58"	31.14'
"C"	204.00'	168.10'	N01°42'35"W	163.38'	47°12'43"	89.15'
"D"	47.84'	25.53'	N06°20'35"W	25.23'	30°34'50"	13.08'
"E"	224.00'	130.61'	S05°13'31"W	128.77'	33°24'32"	67.22'
"F"	359.50'	65.77'	S27°30'47"W	65.68'	10°28'58"	32.98'

- NOTES:
- OWNER OF RECORD: ROANOKE COLLEGE TRUSTEES
 - LEGAL REFERENCE: D.B. 797, PG. 177 RKE. CO. D.B. 821, PG. 370 RKE. CO. W.B. 17, PG. 435 RKE. CO. D.B. 681, PG. 333 RKE. CO. D.B. 736, PG. 71 RKE. CO. D.B. 817, PG. 190 RKE. CO. D.B. 7, PG. 520 RKE. CO. D.B. 820, PG. 415 RKE. CO. D.B. 20, PG. 349 RKE. CO. D.B. 306, PG. 352 RKE. CO. D.B. 629, PG. 214 RKE. CO. D.B. 1, PG. 411 SALEM P.B. 14, PGS. 27-29
 - THE CURRENT TAX MAP NUMBER: 86-3-4 & 85-1-1
 - THIS PLAT WAS PREPARED WITHOUT THE BENEFIT OF A CURRENT TITLE REPORT AND THERE MAY EXIST ENCUMBRANCES WHICH AFFECT THE PROPERTY NOT SHOWN HEREON.

○	PLATTED CORNER (FROM RECORDS)
●	EASEMENT POINT
P.U.E.	PUBLIC UTILITY EASEMENT
D.B.	DEED BOOK
PG.	PAGE
W.B.	WILL BOOK
P.B.	PLAT BOOK
N.T.S.	NOT TO SCALE
T.M.	TAX MAP
P/O	PART OF

ROANOKE COLLEGE TRUSTEES
 D.B. 797, PG. 177 RKE. CO.
 W.B. 17, PG. 435 RKE. CO.
 D.B. 736, PG. 71 RKE. CO.
 D.B. 7, PG. 520 RKE. CO.
 T.M. #86-3-4 P.B. 14, PGS. 27-29

LINE	BEARING	DISTANCE
L1	N34°06'03"E	14.66'



ROANOKE COLLEGE TRUSTEES
 P/O T.M. #85-1-1
 D.B. 820, PG. 415 RKE. CO.
 D.B. 306, PG. 352 RKE. CO.
 D.B. 20, PG. 349 RKE. CO.
 D.B. 629, PG. 214 RKE. CO.
 D.B. 1, PG. 411 SALEM
 P.B. 14, PGS. 27-29

CURVE	RADIUS	ARC LENGTH	CHORD BEARING	CHORD LENGTH	DELTA ANGLE	TANGENT
C1	1472.39'	176.53'	S10°45'17"W	176.42'	6°52'09"	88.37'
C2	1472.39'	75.86'	S05°50'40"W	75.85'	2°57'07"	37.94'
C3	1472.39'	252.38'	S09°16'44"W	252.08'	9°49'16"	126.50'
C4	37.00'	33.74'	N59°12'32"W	32.58'	52°14'32"	18.14'
C5	275.00'	145.91'	N17°53'02"W	144.21'	30°24'01"	74.72'
C6	37.00'	33.74'	S68°32'28"W	32.58'	92°14'32"	18.14'
C7	275.00'	121.22'	S29°47'16"W	120.24'	25°15'21"	61.61'
C8	325.00'	127.57'	N27°57'37"E	126.75'	22°29'22"	64.62'
C9	325.00'	18.21'	N40°48'37"E	18.21'	3°12'39"	9.11'
C10	325.00'	145.78'	N29°33'56"E	144.56'	25°42'01"	74.14'
C11	72.00'	94.88'	N04°39'58"E	88.16'	75°30'03"	55.75'
C12	325.00'	136.28'	N21°04'15"W	135.29'	24°01'34"	69.16'

THE BELOW DESCRIBED OWNER BY VIRTUE OF THE RECORDATION OF THIS PLAT DOES HEREBY GRANT TO THE CITY OF SALEM THOSE CERTAIN AREAS SHOWN HEREON AS SET APART FOR USE AS PUBLIC EASEMENTS.

ROANOKE COLLEGE TRUSTEES
 BY: Morris M. Cregge ITS: Chairman
 STATE OF VIRGINIA
City OF Salem
 I, Rebecca Jo Cockram, A NOTARY PUBLIC IN AND FOR THE AFORESAID STATE DO HEREBY CERTIFY THAT Morris M. Cregge, WHOSE NAME IS SIGNED TO THE FOREGOING INSTRUMENT, HAS PERSONALLY APPEARED BEFORE ME AND ACKNOWLEDGED THE SAME ON THIS 10th DAY OF April, 2015.
Rebecca Jo Cockram REG. # 106135
 NOTARY PUBLIC
 MY COMMISSION EXPIRES 2/28/2019

REBECCA JO COCKRAM
 NOTARY PUBLIC
 Commonwealth of Virginia
 Reg. #168135
 My Commission Expires 2/28/2019

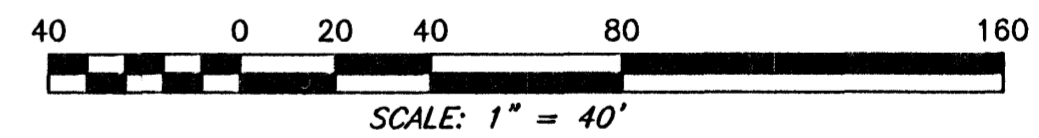
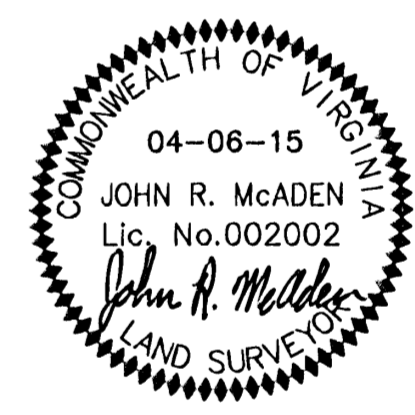
APPROVED:
Charles E. VanAllman Jr. DATE 4/13/2015
 CHARLES E. VAN ALLMAN, JR., P.E., L.S.
 CITY ENGINEER, CITY OF SALEM
James E. Taliaferro, IV DATE 4/13/2015
 JAMES E. TALIAFERRO, IV, P.E. L.S.
 EXECUTIVE SECRETARY, CITY OF SALEM PLANNING COMMISSION

IN THE CLERK'S OFFICE OF THE CIRCUIT COURT OF THE CITY OF SALEM, VIRGINIA, THIS PLAT WAS PRESENTED AND WITH THE CERTIFICATE OF ACKNOWLEDGMENT THERETO ANNEXED IS ADMITTED TO RECORD AT 9:40 O'CLOCK A.M. ON THIS 16 DAY OF April, 2015, IN PLAT BOOK 14, PAGE 31.

TESTE: GARY CHANCE CRAWFORD
 CLERK
Gary Chance Crawford
 DEPUTY CLERK

I HEREBY CERTIFY THAT THIS PLAT IS FROM RECORDS AND IS CORRECT TO THE BEST OF MY KNOWLEDGE AND BELIEF.

John R. McAden
 JOHN R. MCADEN 002002



EASEMENT PLAT FROM RECORDS FOR
ROANOKE COLLEGE TRUSTEES
 SHOWING HEREON
 A NEW 15' P.U.E. (NORTH SIDE OF PEERY DRIVE)
 & A NEW 20' PUBLIC SANITARY SEWER EASEMENT
 HEREBY GRANTED TO CITY OF SALEM
 ON TAX MAP #85-1-1
 AND
 A NEW 15' P.U.E. (SOUTH SIDE OF PEERY DRIVE)
 HEREBY GRANTED TO CITY OF SALEM
 ON TAX MAP #85-1-1
 AND
 A NEW 5' P.U.E. &
 A NEW 20' PUBLIC INCREMENT WEATHER ACCESS EASEMENT
 HEREBY GRANTED TO CITY OF SALEM
 ON TAX MAP #86-3-4
 CITY OF SALEM, VIRGINIA
 DATED APRIL 6, 2015
 JOB #R1300078.00-ESMT
 SCALE: 1"=40'



DRN: SCB
 CHK: JRM
 TEL: 540-772-9580 FAX: 540-772-8050
PLANNERS ARCHITECTS ENGINEERS SURVEYORS
 Balzer & Associates, Inc. 1208 Corporate Circle Roanoke Va. 24018