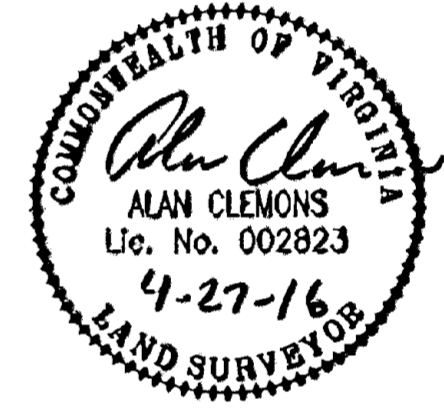
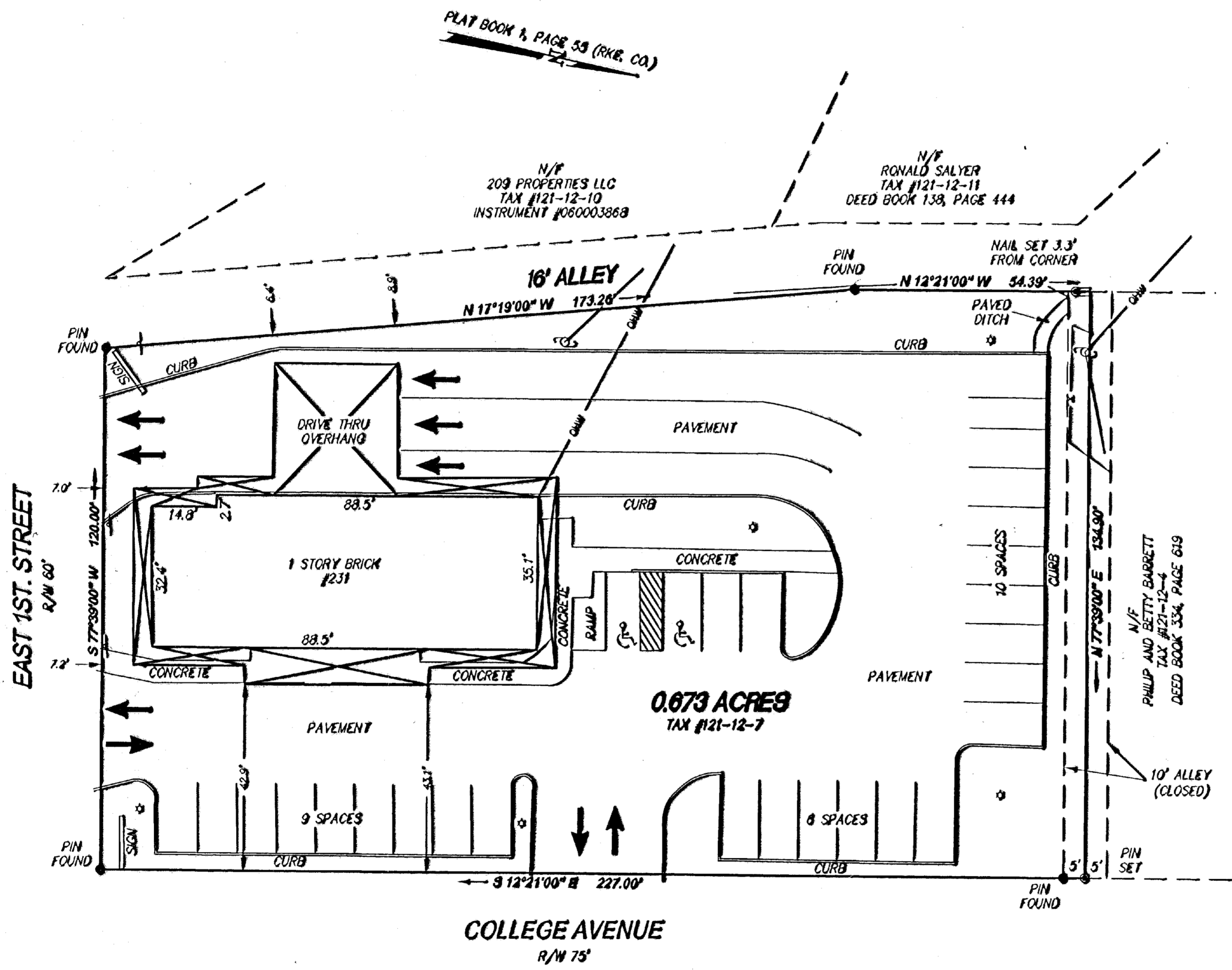
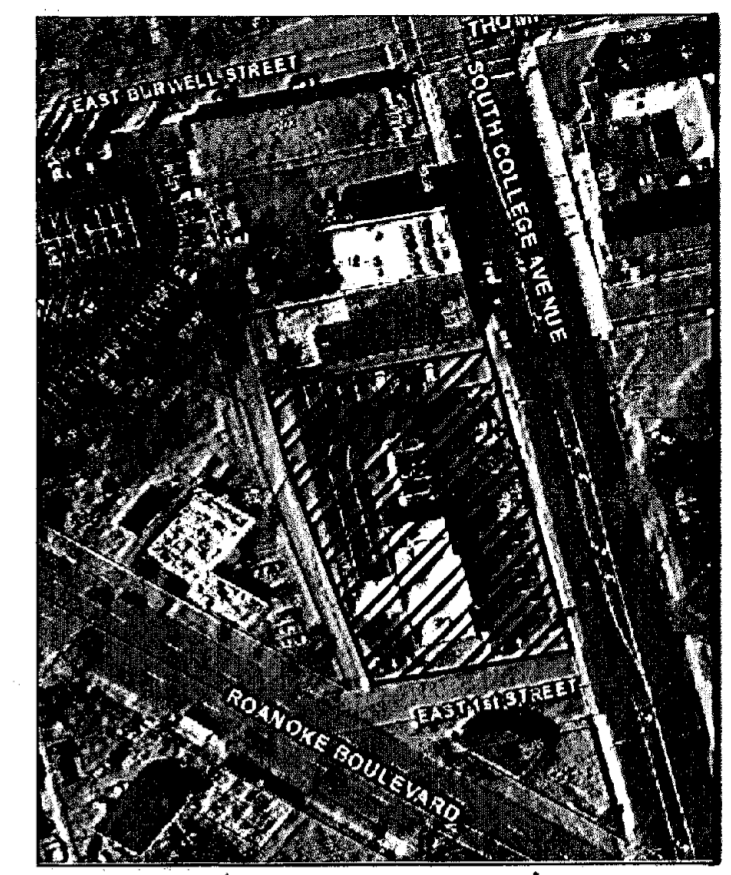


GENERAL NOTES:

1. THIS PLAT WAS PREPARED WITH BENEFIT OF A TITLE REPORT PERFORMED BY FIDELITY NATIONAL TITLE INSURANCE COMPANY BEING UNIT #03000.641048 WITH AN EFFECTIVE DATE OF 04/28/2010 AND IS SUBJECT THERETO.
2. THE SUBJECT PROPERTY IS WITHIN THE LIMITS OF ZONE "X-SHADED" AS SHOWN ON THE FEMA FLOOD INSURANCE RATE MAP PANEL NO. 51161C0141 G, EFFECTIVE DATE SEPTEMBER 28, 2007. THIS DETERMINATION IS BASED ON SAID MAP AND HAS NOT BEEN VERIFIED BY ACTUAL FIELD ELEVATIONS.
3. PIN SET BY PARKER DESIGN GROUP IS 1/2" DIAMETER BY 18" LONG REINFORCING ROD DRIVEN TO GROUND LEVEL WITH A PLASTIC ORANGE CAP ON TOP WITH "PARKER DESIGN" EMBOSSED. A WITNESS MARKER IS DRIVEN BESIDE CORNER PIN.

- LEGEND**
- MONUMENT SET
 - MONUMENT FOUND
 - SIGN
 - ⊙ LIGHT POLE
 - ⊕ UTILITY POLE



THIS PLAT IS BASED ON A CURRENT FIELD SURVEY. FIRST VIRGINIA BANK-SOUTHWEST ARE THE OWNERS OF RECORD, SEE D.B. 72, PG. 414.

SURVEY FOR
BANK OF BOTETOURT

SHOWING 0.673 ACRES SITUATED OFF COLLEGE AVENUE AND EAST FIRST STREET CITY OF SALEM, VIRGINIA SCALE: 1"=20'

TAX # 121-12-7
DRAWN: MAG
CALC.: MAG

DATE: APRIL 27, 2010
N.B.: RAW DATA
W.O.: 18-0051:01

IN THE CLERK'S OFFICE OF THE CIRCUIT COURT OF THE CITY OF SALEM, VIRGINIA THIS MAP WAS PRESENTED WITH THE CERTIFICATE OF ACKNOWLEDGEMENT THERETO ATTACHED ADMITTED TO RECORD AT 12:10 O'CLOCK P.M. ON THIS 17 DAY OF July, 2010.

TESTED BY: *Chance Crawford*
CHANCE CRAWFORD
CLERK
DEPUTY CLERK

Slide 224 BK 14 pg 71