

GPS DATA SHEET

Station Data

| | | | |
|----------------------------------|--------------------------------------|---------------------------------------|-------------------|
| Station Name: COSM 10-02 | | Municipality: City of Salem | |
| Zone: Virginia South-4502 | Convergence: -0° 55' 57" | Year Set: 2011 | |
| Projection: Lambert | Combined Factor: 0.99989838 | Year Recovered: | |
| Horizontal Data | Datum: NAD 83 | Scale Factor: 0.999946459 | Order: 2nd |
| | Northing: 3632209.17 | Easting: 11036033.335 | |
| | Latitude: 37° 17' 18.34400" W | Longitude: 80° 02' 10.40641" W | |
| Vertical Data | Elevation Factor: 0.999951918 | Order: 3rd | |
| | Elevation: (NGVD 29) 1111.87 | Elevation: (NAVD 88) 1111.26 | |

Reference Station

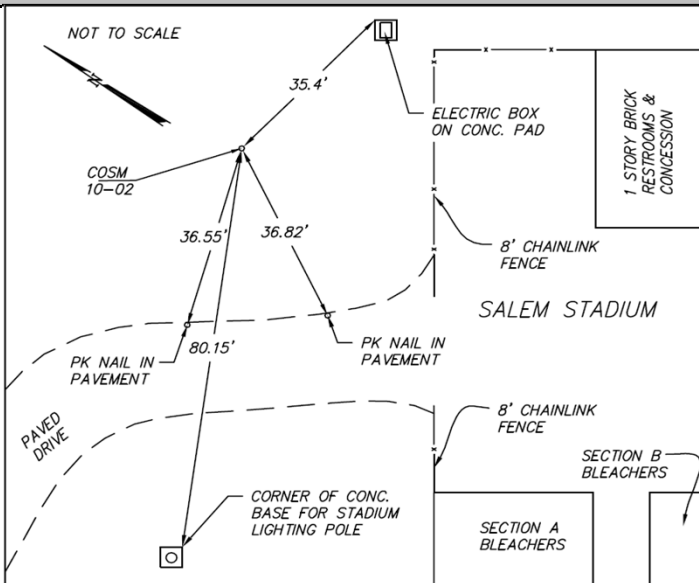
| Station | Grid Distance | Grid Azimuth |
|-------------------|-----------------|--------------------|
| COSM 10-01 | 3840.24' | 80° 09' 03" |

Station Location & Description

The station is located in the east side of the City of Salem. To reach from the intersection of East Main Street (460) and Electric Road (Route 419), go south on Electric Road to the intersection with Lynchburg Turnpike. Turn right on Lynchburg Turnpike and go to the intersection with Texas Street. Turn left on Texas Street and go to the entrance to the parking lot for the Salem Stadium. Turn left into the parking lot and then left into gated area at maintenance office. Follow paved drive to gate at the concession and restrooms. The station is a brass disk, set in concrete on the left side of paved drive and stamped COSM 10-02.

This survey data prepared using 1 meter= 3.2808333333 feet.

Station Sketch



Station Photograph



CALDWELL WHITE ASSOCIATES
ENGINEERS / SURVEYORS / PLANNERS

4203 Melrose Avenue, NW
P.O. Box 6260
Roanoke, VA 24017

Phone: (540) 366-3400
Fax: (540) 366-8702
E-Mail: cwaroanoke@aol.com