

GPS DATA SHEET

Station Data

| | | | |
|----------------------------------|--------------------------------------|---------------------------------------|-------------------|
| Station Name: COSM 09-05 | | Municipality: City of Salem | |
| Zone: Virginia South-4502 | Convergence: -0° 56' 28" | Year Set: 2009 | |
| Projection: Lambert | Combined Factor: 0.99989735 | Year Recovered: 2009 | |
| Horizontal Data | Datum: NAD 83 | Scale Factor: 0.999947090 | Order: 2nd |
| | Northing: 3623929.763 | Easting: 11031703.908 | |
| | Latitude: 37° 15' 55.79263" N | Longitude: 80° 03' 02.29281" W | |
| Vertical Data | Elevation Factor: 0.999950257 | Order: 3rd | |
| | Elevation: (NGVD 29) 1146.37 | Elevation: (NAVD 88) 1145.79 | |

Reference Station

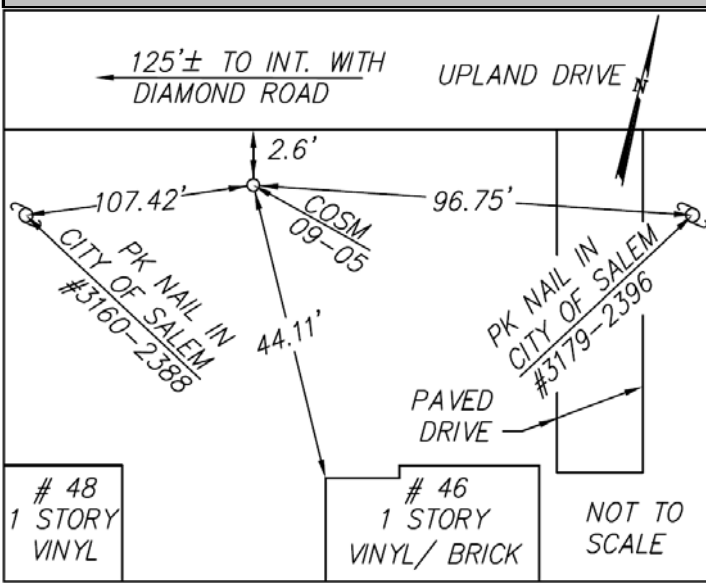
| Station | Grid Distance | Grid Azimuth |
|-------------------|-----------------|--------------------|
| COSM 09-06 | 1461.73' | 65° 13' 39" |

Station Location & Description

The station is set in the south side of the City of Salem. To reach from the intersection of Apperson Drive and Electric Road (Route 419), go west on Apperson Drive to the intersection with Orchard Drive. Turn left on Orchard Drive and go to the intersection with Homestead Drive. Turn right on Homestead Drive and go to the intersection with Upland Drive. Turn right on Upland Drive and go 1800' ± to the monument on the left side of Upland Drive at 46 Upland Drive. The station is a brass disk, set in concrete, flush with the ground and is stamped COSM 09-05.

This survey data prepared using 1 meter= 3.2808333333 feet.

Station Sketch



Station Photograph



CALDWELL WHITE ASSOCIATES
ENGINEERS / SURVEYORS / PLANNERS

4203 Melrose Avenue, NW
P.O. Box 6260
Roanoke, VA 24017

Phone: (540) 366-3400
Fax: (540) 366-8702
E-Mail: cwaroanoke@aol.com