

# GPS DATA SHEET

## Station Data

Station Name: <b>COSM 09-01</b>		Municipality: <b>City of Salem</b>	
Zone: <b>Virginia South-4502</b>	Convergence: <b>-0° 56' 54"</b>	Year Set: <b>2009</b>	
Projection: <b>Lambert</b>	Combined Factor: <b>0.99989704</b>	Year Recovered: <b>2009</b>	
<b>Horizontal Data</b>	Datum: <b>NAD 83</b>	Scale Factor: <b>0.999946852</b>	Order: <b>2nd</b>
	Northing: <b>3626958.253</b>	Easting: <b>11028297.691</b>	
	Latitude: <b>37° 16' 25.17744" N</b>	Longitude: <b>80° 03' 45.04611" W</b>	
<b>Vertical Data</b>	Elevation Factor: <b>0.999950185</b>	Order: <b>3rd</b>	
	Elevation: (NGVD 29) <b>1147.27</b>	Elevation: (NAVD 88) <b>1147.85</b>	

## Reference Station

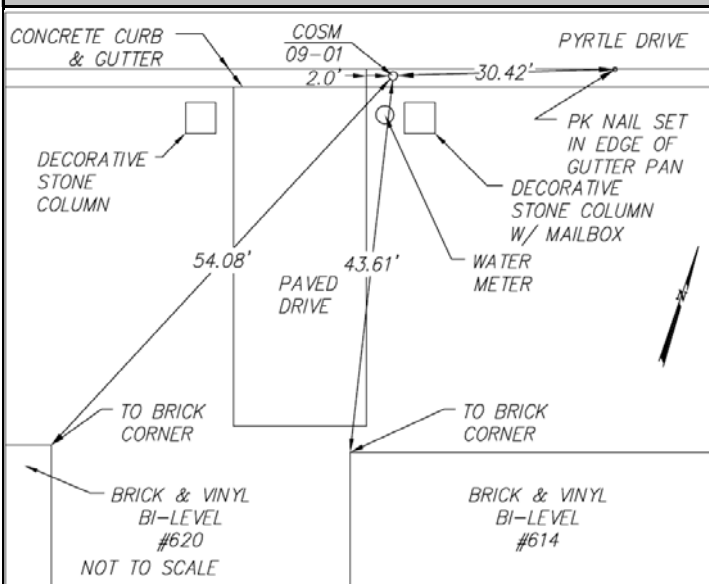
Station	Grid Distance	Grid Azimuth
<b>COSM 09-02</b>	<b>2153.88'</b>	<b>156° 40' 47"</b>

## Station Location & Description

The station is located in the south side of the City of Salem, Virginia. To reach from the intersection of Apperson Drive and Electric Road (Route 419), go west on Apperson Drive to intersection with South Colorado Street. Turn left on South Colorado Street. South Colorado Street becomes Kimball Avenue. Follow Kimball Avenue to intersection with Pyrtle Drive. Turn Left on Pyrtle Drive and continue for 900'± to monument on left side of street. The station is a brass disk, set in a concrete gutter on the south side of Pyrtle Drive, in front of 614 Pyrtle Drive and is stamped COSM 09-01.

This survey data prepared using 1 meter= 3.2808333333 feet.

### Station Sketch



### Station Photograph



**CALDWELL WHITE ASSOCIATES**  
ENGINEERS / SURVEYORS / PLANNERS

4203 Melrose Avenue, NW Phone: (540)366-3400  
P.O. Box 6260 Fax: (540)366-8702  
Roanoke, VA 24017 E-Mail: cwaroanoke@aol.com