

# GPS DATA SHEET

## Station Data

Station Name: <b>COSM 08-15</b>		Municipality: <b>City of Salem</b>	
Zone: <b>Virginia South-4502</b>	Convergence: <b>-0° 55' 55"</b>	Year Set: <b>2008</b>	
Projection: <b>Lambert</b>	Combined Factor: <b>0.99990070</b>	Year Recovered: <b>2008</b>	
<b>Horizontal Data</b>	Datum: <b>NAD 83</b>	Scale Factor: <b>0.999946194</b>	Order: <b>2nd</b>
	Northing: <b>3636438.121</b>	Easting: <b>11036319.031</b>	
	Latitude: <b>37° 18' 00.19800"N</b>	Longitude: <b>80° 02' 07.72257"W</b>	
<b>Vertical Data</b>	Elevation Factor: <b>0.999954504</b>	Order: <b>3rd</b>	
	Elevation: (NGVD 29) <b>1057.09</b>	Elevation: (NAVD 88) <b>1056.48</b>	

## Reference Station

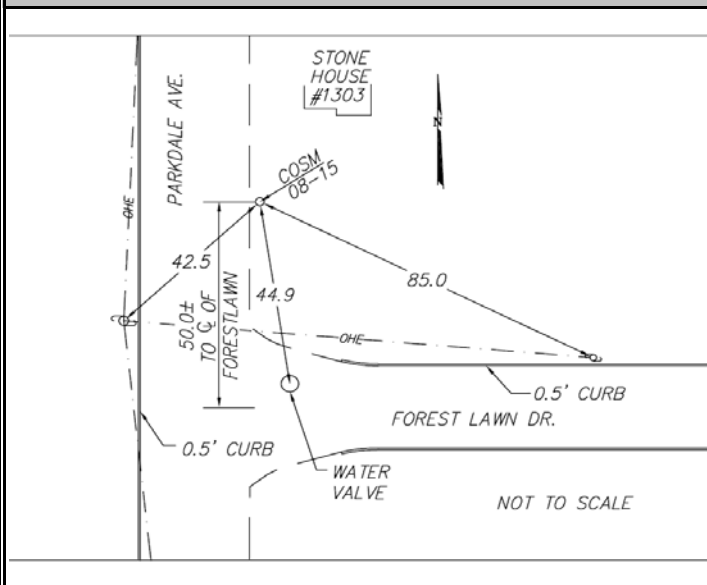
Station	Grid Distance	Grid Azimuth
<b>COSM 08-14</b>	<b>976.15'</b>	<b>172° 34' 32"</b>

## Station Location & Description

The station is located in the north side of the City of Salem, Virginia. To reach from the Roanoke County Courthouse, go east on Main Street to the intersection with Parkdale Drive. Go north on Parkdale Drive to the intersection with Forest Lawn Drive. The station is a brass disk, set in concrete in front of #1303 Forest Lawn Drive, flush with the ground, 50' +/- past the centerline of intersection with Forest Lawn Drive and is stamped COSM 08-15.

This survey data prepared using 1 meter= 3.2808333333 feet.

### Station Sketch



### Station Photograph



**CALDWELL WHITE ASSOCIATES**  
ENGINEERS / SURVEYORS / PLANNERS

4203 Melrose Avenue, NW  
P.O. Box 6260  
Roanoke, VA 24017

Phone: (540) 366-3400  
Fax: (540) 366-8702  
E-Mail: [cwaroanoke@aol.com](mailto:cwaroanoke@aol.com)