

GPS DATA SHEET

STATION DATA

STATION NAME COSM 00-14		MUNICIPALITY CITY OF SALEM	
ZONE: Virginia South	CONVERGANCE: -0°57'21.666"	YEAR SET: 2000	
PROJECTION: Lambert	COMBINED FACTOR: 0.999896539	YEAR RECOVERED: 2001	
HORIZONTAL DATA	DATUM: NAD 83/93	SCALE FACTOR: 0.999946649	ORDER: 1 st
	NORTHING: 3,628,146.2267	EASTING: 11,024,630.0421	
	LATITUDE: 37°16'36.31926"N	LONGITUDE: 80°04'30.66314"W	
VERTICAL DATA	ELEVATION FACTOR: 0.999949888	ORDER: 2 nd	
	NGVD 29 ELEVATION: 1153.70 ft.		
	NAVD 88 ELEVATION: 1153.11 ft.		

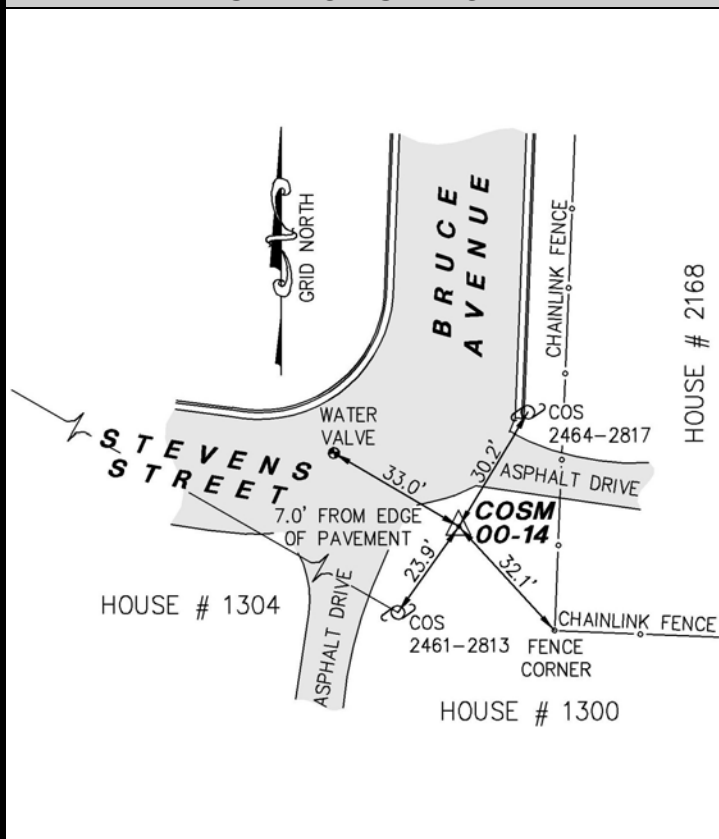
REFERENCE STATION

STATION	GRID DISTANCE	GRID AZIMUTH
COSM 00-15	961.12 ft.	1°35'45"

STATION LOCATION & DESCRIPTION

The Station is located in the southwest side of the City of Salem, Virginia.
 To reach from the Farmer's Market at the intersection of Main Street and North Broad Street, go west on West Main Street 1.2 miles to the intersection with Mill Lane. Go south on Mill Lane 0.8 miles to the intersection with Penley Boulevard. Go east on Penley Boulevard 0.3 miles to the intersection with Bruce Street. Go south on Bruce Street 0.2 miles to the Station set on the south side of the intersection of Bruce Street with Stevens Street.
 The station is a brass disk set in concrete flush with the ground and stamped CITY OF SALEM SURVEY MONUMENT 00-14.

STATION SKETCH



STATION PHOTOGRAPH



LUMSDEN ASSOCIATES,
 ENGINEERS-SURVEYORS-PLANNERS

4664 Brambleton Avenue, SW
 P.O. Box 20669
 Roanoke, VA 24018

Phone: (540) 774-4411
 Fax: (540) 772-9445
 E-Mail: mail@lumsdenpc.com