

GPS DATA SHEET

STATION DATA

STATION NAME COSM 00-18		MUNICIPALITY CITY OF SALEM	
ZONE: Virginia South	CONVERGANCE: -0°56'53.392"	YEAR SET: 2000	
PROJECTION: Lambert	COMBINED FACTOR: 0.999897554	YEAR RECOVERED: 2001	
HORIZONTAL DATA	DATUM: NAD 83/93	SCALE FACTOR: 0.999946603	ORDER: 1 st
	NORTHING: 3,628,700.9734	EASTING: 11,028,404.8225	
	LATITUDE: 37°16'42.42372"N	LONGITUDE: 80°03'44.07760"W	
VERTICAL DATA	ELEVATION FACTOR: 0.999950949	ORDER: 2 nd	
	NGVD 29 ELEVATION: 1131.52 ft.		
	NAVD 88 ELEVATION: 1130.93 ft.		

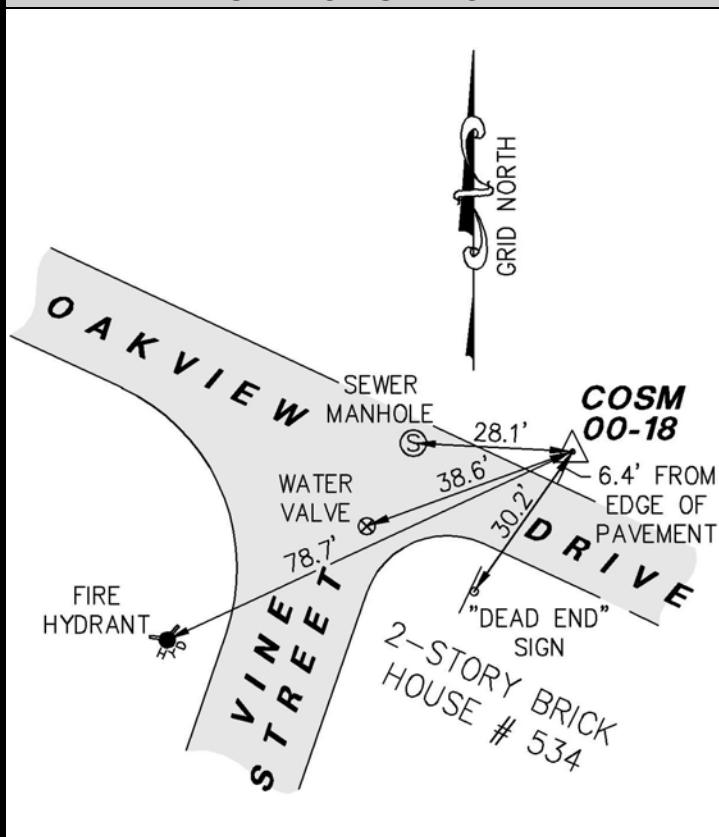
REFERENCE STATION

STATION	GRID DISTANCE	GRID AZIMUTH
COSM 00-22	5410.35 ft.	344°46'45"

STATION LOCATION & DESCRIPTION

The Station is located in the southwest side of the City of Salem, Virginia.
 To reach from the Farmer's Market at the intersection of Main Street and North Broad Street, go east on East Main Street 0.1 miles to the intersection with Colorado Street. Go south on Colorado Street 1.1 miles to the intersection with Kimball Avenue. Go west on Kimball Avenue 0.5 miles to the intersection with Vine Street. Go north on Vine Street for 0.1 miles to the Station on the northeast side of the intersection of Vine Street and Oakview Drive.
 The station is a brass disk set in concrete flush with the ground and stamped CITY OF SALEM SURVEY MONUMENT 00-18.

STATION SKETCH



STATION PHOTOGRAPH



LUMSDEN ASSOCIATES,
ENGINEERS-SURVEYORS-PLANNERS

4664 Brambleton Avenue, SW
P.O. Box 20669
Roanoke, VA 24018

Phone: (540) 774-4411
Fax: (540) 772-9445
E-Mail: mail@lumsdenpc.com