

GPS DATA SHEET

STATION DATA

STATION NAME COSM 00-16		MUNICIPALITY CITY OF SALEM	
ZONE: Virginia South	CONVERGANCE: -0°57'22.584"	YEAR SET: 2000	
PROJECTION: Lambert	COMBINED FACTOR: 0.999897237	YEAR RECOVERED: 2001	
HORIZONTAL DATA	DATUM: NAD83/93	SCALE FACTOR: 0.999946711	ORDER: 1 st
	NORTHING: 3,627,342.5842	EASTING: 11,024,494.4525	
	LATITUDE: 37°16'28.35199"N	LONGITUDE: 80°04'32.17461"W	
VERTICAL DATA	ELEVATION FACTOR: 0.999950524	ORDER: 2 nd	
	NGVD 29 ELEVATION: 1140.40 ft.		
	NAVD 88 ELEVATION: 1139.80 ft.		

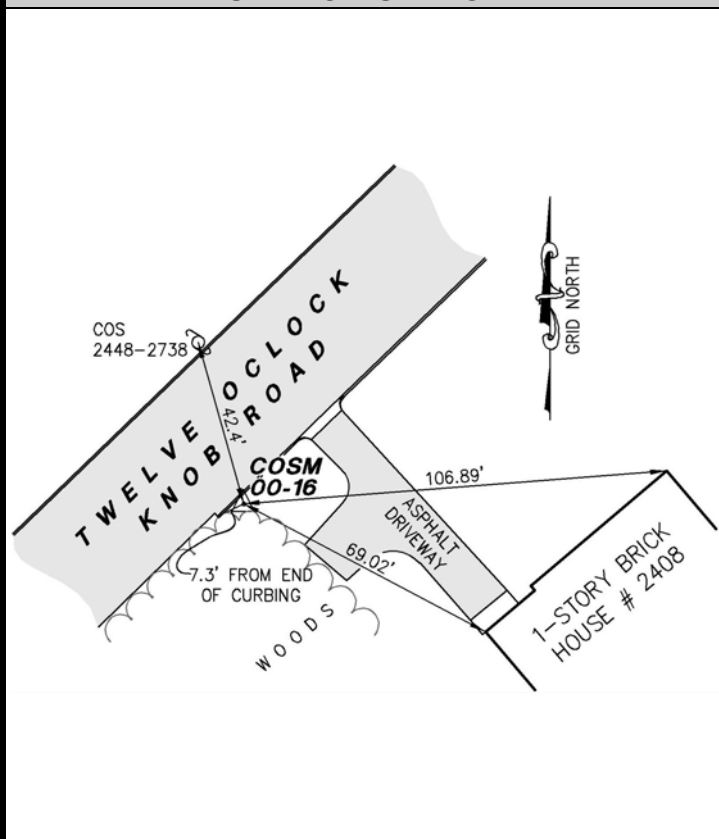
REFERENCE STATION

STATION	GRID DISTANCE	GRID AZIMUTH
COSM 00-17	1237.37 ft.	43°05'16"

STATION LOCATION & DESCRIPTION

The Station is located in the southwest side of the City of Salem, Virginia.
 To reach from the Farmer's Market at the intersection of Main Street and North Broad Street, go west on West Main Street 0.1 miles to the intersection with Union Street. Go south on Union Street 0.7 miles to the intersection with Eddy Street. Go southwest on Eddy Street 0.3 miles to the intersection with Hill Avenue. Go west on Hill Avenue for 0.3 miles to the intersection with Chaffee Street. Go northwest on Chaffee Street 65 yards to the intersection with Twelve O'clock Knob Road. Go southwest on Twelve O'clock Knob Road 0.4 miles to the Station on the left in the front yard of house #2408. The station is a brass disk set in concrete flush with the ground and stamped CITY OF SALEM SURVEY MONUMENT 00-16.

STATION SKETCH



STATION PHOTOGRAPH



LUMSDEN ASSOCIATES,
 ENGINEERS-SURVEYORS-PLANNERS

4664 Brambleton Avenue, SW
 P.O. Box 20669
 Roanoke, VA 24018

Phone: (540) 774-4411
 Fax: (540) 772-9445
 E-Mail: mail@lumsdenpc.com