

# GPS DATA SHEET

## STATION DATA

STATION NAME <b>COSM 00-15</b>		MUNICIPALITY <b>CITY OF SALEM</b>	
ZONE: Virginia South	CONVERGANCE: -0°57'21.586"	YEAR SET: 2000	
PROJECTION: Lambert	COMBINED FACTOR: 0.999897925	YEAR RECOVERED: 2001	
<b>HORIZONTAL DATA</b>	DATUM: NAD 83/93	SCALE FACTOR: 0.999946578	ORDER: 1 <sup>st</sup>
	NORTHING: 3,629,106.9690	EASTING: 11,024,656.8061	
	LATITUDE: 37°16'45".82167"N	LONGITUDE: 80°04'30.53037"W	
<b>VERTICAL DATA</b>	ELEVATION FACTOR: 0.999951344	ORDER: 2 <sup>nd</sup>	
	NGVD 29 ELEVATION: 1123.25 ft.		
	NAVD 88 ELEVATION: 1122.66 ft.		

## REFERENCE STATION

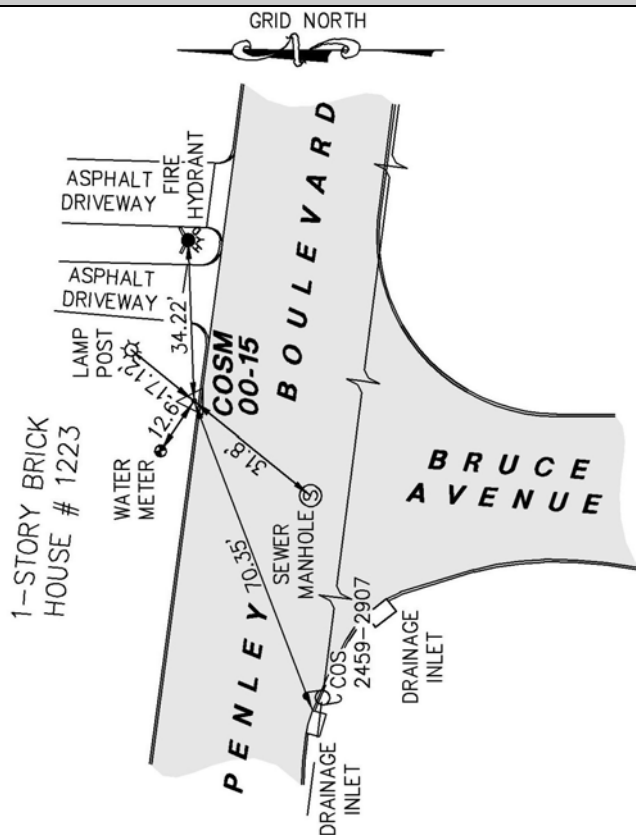
STATION	GRID DISTANCE	GRID AZIMUTH
COSM 00-14	961.12 ft.	181°35'45"

## STATION LOCATION & DESCRIPTION

The Station is located in the southwest side of the City of Salem, Virginia.  
 To reach from the Farmer's Market at the intersection of Main Street and North Broad Street, go west on West Main Street 1.2 miles to the intersection with Mill Lane. Go south on Mill Lane 0.8 miles to the intersection with Penley Boulevard. Go east on Penley Boulevard 0.3 miles to the Station on the left situated on the north side of the intersection of Penley Lane with Bruce Street.

The station is a brass disk set in concrete flush with the ground and stamped CITY OF SALEM SURVEY MONUMENT 00-15.

### STATION SKETCH



### STATION PHOTOGRAPH



**LUMSDEN ASSOCIATES,**  
ENGINEERS-SURVEYORS-PLANNERS

4664 Brambleton Avenue, SW  
P.O. Box 20669  
Roanoke, VA 24018

Phone: (540) 774-4411  
Fax: (540) 772-9445  
E-Mail: mail@lumsdenpc.com