

# GPS DATA SHEET

## Station Data

Station Name: <b>COSM 92-25</b>		Municipality: <b>City of Salem</b>	
Zone: <b>Virginia South</b>	Convergence: <b>-0° 57' 36.187"</b>	Year Set: <b>1992</b>	
Projection: <b>Lambert</b>	Combined Factor: <b>0.999881725</b>	Year Recovered: <b>2008</b>	
<b>Horizontal Data</b>	Datum: <b>NAD 83</b>	Scale Factor: <b>0.999946967</b>	Order: <b>2nd</b>
	Northing: <b>3624207.539</b>	Easting: <b>11022630.007</b>	
	Latitude: <b>37° 15' 57.05033"N</b>	Longitude: <b>80° 04' 54.58964"W</b>	
<b>Vertical Data</b>	Elevation Factor: <b>0.999934754</b>	Order: <b>3rd</b>	
	Elevation: (NGVD 29) <b>1364.02</b>	Elevation: (NAVD 88) <b>1363.47</b>	

## Reference Station

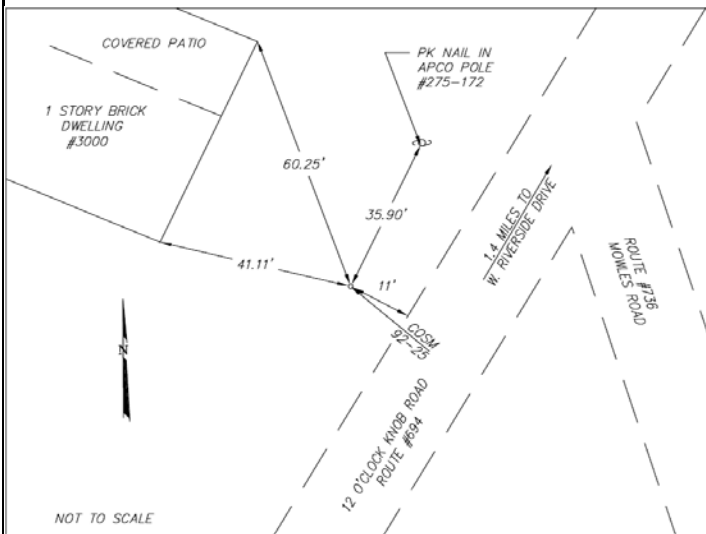
Station	Grid Distance	Grid Azimuth

## Station Location & Description

Point is a brass disk set in concrete (City of Salem Monument). Point is on the west side of 12 O'clock Knob Road, 11.0' from its western edge of pavement, in front yard of house #3000. Said point is 60' ± south of the intersection of Route #694 and Route #736. Said point is also 1.4 miles south of the intersection of 12 O'clock Knob Road and W. Riverside Drive.

Monument was set in 1992 by TPP&S and recovered in 2008 by Caldwell White Associates.  
Chain ties have been verified and witness card updated.  
This survey data prepared using 1 meter= 3.280833 feet.

### Station Sketch



### Station Photograph



**CALDWELL WHITE ASSOCIATES**  
ENGINEERS / SURVEYORS / PLANNERS

4203 Melrose Avenue, NW  
P.O. Box 6260  
Roanoke, VA 24017

Phone: (540) 366-3400  
Fax: (540) 366-8702  
E-Mail: cwaroanoke@aol.com