

GPS DATA SHEET

Station Data

| | | | |
|---------------------------------|--------------------------------------|-------------------------------------|--------------------------------------|
| Station Name: COSM 92-16 | | Municipality: City of Salem | |
| Zone: Virginia South | Convergence: -0° 56' 14.940" | Year Set: 1992 | |
| Projection: Lambert | Combined Factor: 0.999891221 | Year Recovered: 2008 | |
| Horizontal Data | Datum: NAD 83 | Scale Factor: 0.999947151 | Order: 2nd |
| | Northing: 3621916.326 | | Easting: 11033414.850 |
| | Latitude: 37° 15' 36.16476"N | | Longitude: 80° 02' 40.72170"W |
| Vertical Data | Elevation Factor: 0.999944067 | Order: 3rd | |
| | Elevation: (NGVD 29) 1169.40 | Elevation: (NAVD 88) 1168.82 | |

Reference Station

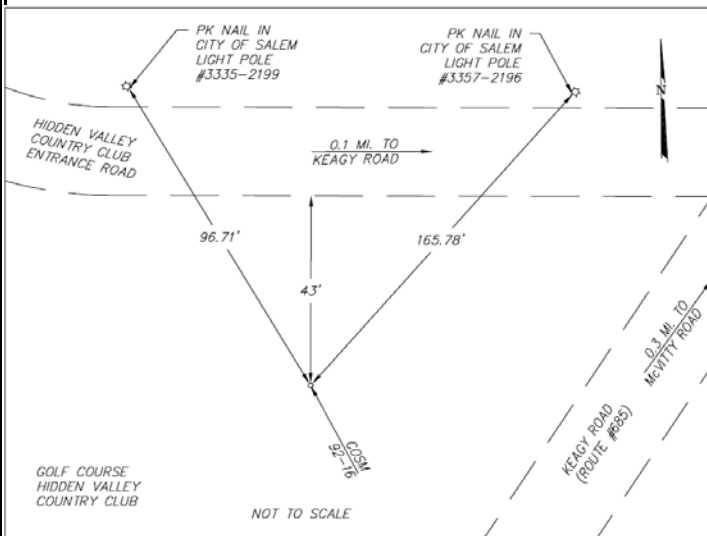
| Station | Grid Distance | Grid Azimuth |
|---------|---------------|--------------|
| | | |

Station Location & Description

Point is a brass disk set in concrete (City of Salem Monument). Point is located at Hidden Valley Country Club, 43' south of the southern edge of pavement of the entrance road to said Country Club. Said point is 0.1 miles west of the intersection of the Country Club entrance road and Keagy Road. Said intersection is 0.3 miles southwest of the intersection of Keagy Road and McVitty Road.

Monument was set in 1992 by TPP&S and recovered in 2008 by Caldwell White Associates.
Chain ties have been verified and witness card updated.
This survey data prepared using 1 meter= 3.280833 feet.

Station Sketch



Station Photograph



CALDWELL WHITE ASSOCIATES
ENGINEERS / SURVEYORS / PLANNERS

4203 Melrose Avenue, NW Phone: (540) 366-3400
P.O. Box 6260 Fax: (540) 366-8702
Roanoke, VA 24017 E-Mail: cwaroanoke@aol.com