

GPS DATA SHEET

Station Data

Station Name: COSM 92-13		Municipality: City of Salem	
Zone: Virginia South	Convergence: -0° 56' 16.156"	Year Set: 1992	
Projection: Lambert	Combined Factor: 0.999890181	Year Recovered: 2008	
Horizontal Data	Datum: NAD 83	Scale Factor: 0.999946247	Order: 2nd
	Northing: 3633836.354		Easting: 11033447.969
	Latitude: 37° 17' 34.01340"N		Longitude: 80° 02' 42.72550"W
Vertical Data	Elevation Factor: 0.999943930	Order: 3rd	
	Elevation: (NGVD 29) 1172.31	Elevation: (NAVD 88) 1171.71	

Reference Station

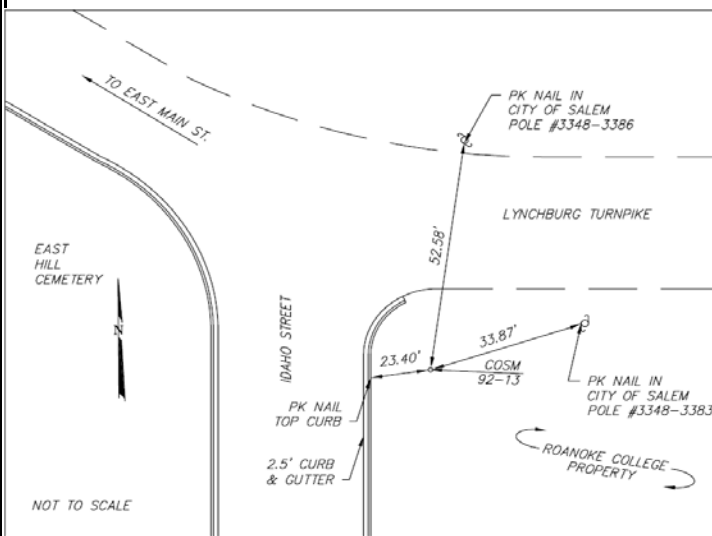
Station	Grid Distance	Grid Azimuth

Station Location & Description

Point is a brass disk set in concrete (City of Salem Monument). Point is in a field (property of Roanoke College) at the southeast corner of the intersection of Idaho Street and Lynchburg Turnpike. Said point is 30' ± south of the centerline of Lynchburg Turnpike and 65' ± east of the centerline of Idaho Street.

Monument was set in 1992 by TPP&S and recovered in 2008 by Caldwell White Associates.
Chain ties have been verified and witness card updated.
This survey data prepared using 1 meter= 3.280833 feet.

Station Sketch



Station Photograph



CALDWELL WHITE ASSOCIATES
ENGINEERS / SURVEYORS / PLANNERS

4203 Melrose Avenue, NW Phone: (540) 366-3400
P.O. Box 6260 Fax: (540) 366-8702
Roanoke, VA 24017 E-Mail: cwaroanoke@aol.com