

# GPS DATA SHEET

## Station Data

Station Name: <b>COSM 92-10</b>		Municipality: <b>City of Salem</b>	
Zone: <b>Virginia South</b>	Convergence: <b>-0° 56' 09.973"</b>	Year Set: <b>1992</b>	
Projection: <b>Lambert</b>	Combined Factor: <b>0.999891361</b>	Year Recovered: <b>2008</b>	
<b>Horizontal Data</b>	Datum: <b>NAD 83</b>	Scale Factor: <b>0.999946322</b>	Order: <b>2nd</b>
	Northing: <b>3632646.289</b>		Easting: <b>11034251.790</b>
	Latitude: <b>37° 17' 22.37822"N</b>		Longitude: <b>80° 02' 32.53839"W</b>
<b>Vertical Data</b>	Elevation Factor: <b>0.999945036</b>	Order: <b>3rd</b>	
	Elevation: (NGVD 29) <b>1149.20</b>	Elevation: (NAVD 88) <b>1148.60</b>	

## Reference Station

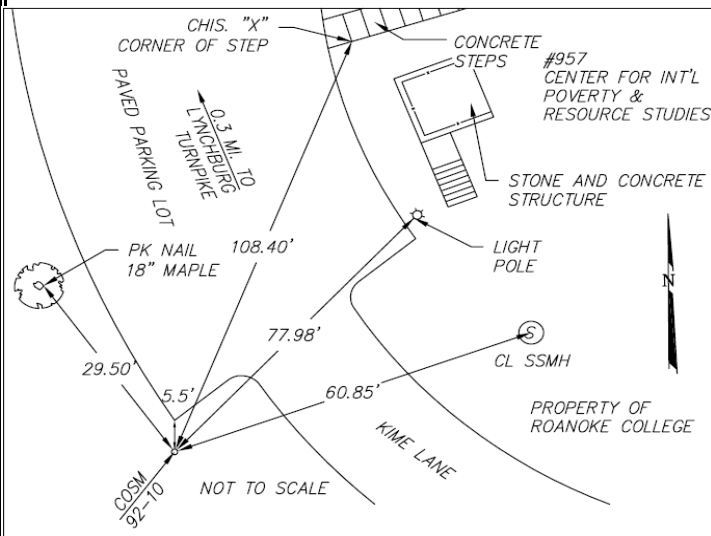
Station	Grid Distance	Grid Azimuth

## Station Location & Description

Point is a brass disk set in concrete (City of Salem Monument). Point is in a field (Roanoke College property). Said point is south of the southwest corner of a paved parking lot for the Center For International Poverty & Resource Studies. Point is also 0.3 miles southwest of the intersection of Kime Lane and Lynchburg Turnpike.

Monument was set in 1992 by TPP&S and recovered in 2008 by Caldwell White Associates.  
Chain ties have been verified and witness card updated.  
This survey data prepared using 1 meter= 3.280833 feet.

### Station Sketch



### Station Photograph



**CALDWELL WHITE ASSOCIATES**  
ENGINEERS / SURVEYORS / PLANNERS

4203 Melrose Avenue, NW      Phone: (540) 366-3400  
P.O. Box 6260                      Fax: (540) 366-8702  
Roanoke, VA 24017                E-Mail: cwaroanoke@aol.com